



6, Riverside, Hertford  
SG14 1QE  
Price Guide £585,000



[stevenoates.com](http://stevenoates.com)



## 6 Riverside, Hertford, SG14 1QE

An attractive and recently renovated three bedroom character cottage with flexible living laid out over three floors. The property has a cosy living room with feature log burner and attractive round bayed double glazed window, leading into a recently upgraded open plan kitchen / diner with lantern roof extension, luxury re-fitted downstairs shower room. The first floor comprises of two good size bedroom and the added benefit of a newly fitted first floor shower room, the principal bedroom is facing onto the beautiful River Lee. Stairs lead up to the second floor where there is a further room ideal for a home workspace. Outside there is a low maintenance courtyard style garden for outdoor enjoyment.

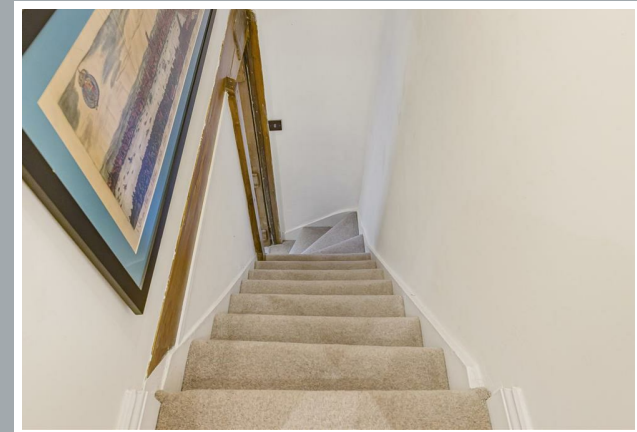
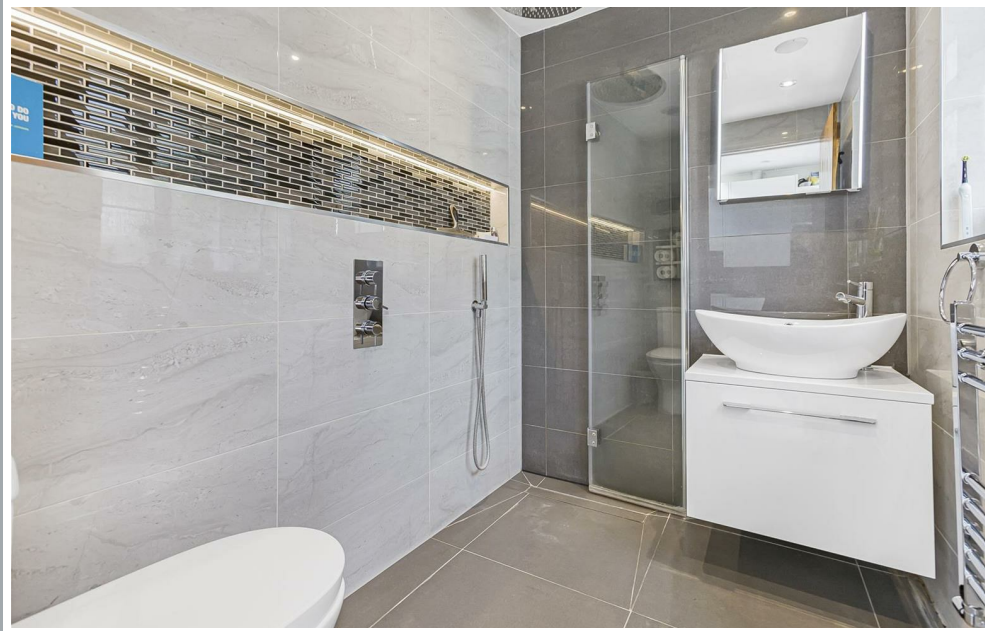
Located on the highly sought after Folly Island in the centre of Hertford, this beautiful cottage benefits from easy access to both Hertford East & Hertford North railway stations which both offer fast and regular trains to London's Liverpool Street & Moorgate. Hertford town centre is only a short distance away and provides a wide choice of local shops, bars and restaurants.



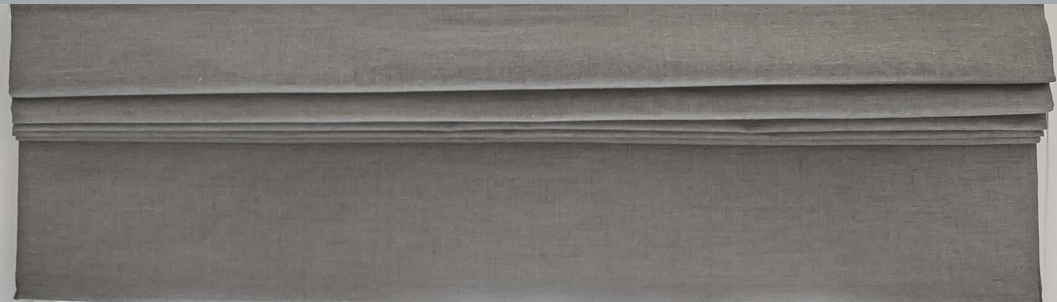
70 Fore Street, Hertford, Hertfordshire, SG14 1BY



70 Fore Street, Hertford, Hertfordshire, SG14 1BY



70 Fore Street, Hertford, Hertfordshire, SG14 1BY



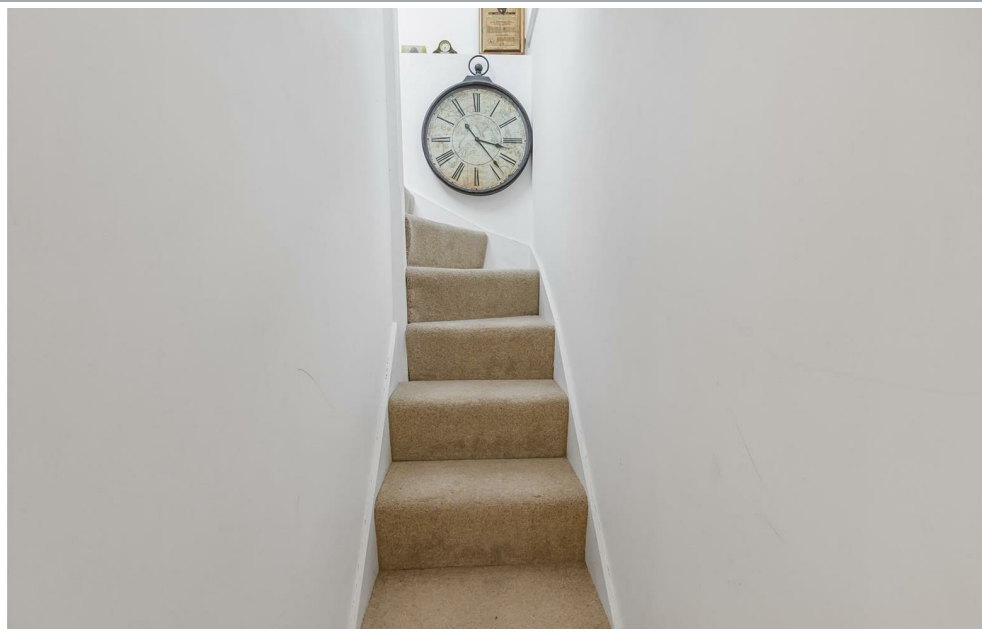


70 Fore Street, Hertford, Hertfordshire, SG14 1BY



70 Fore Street, Hertford, Hertfordshire, SG14 1BY



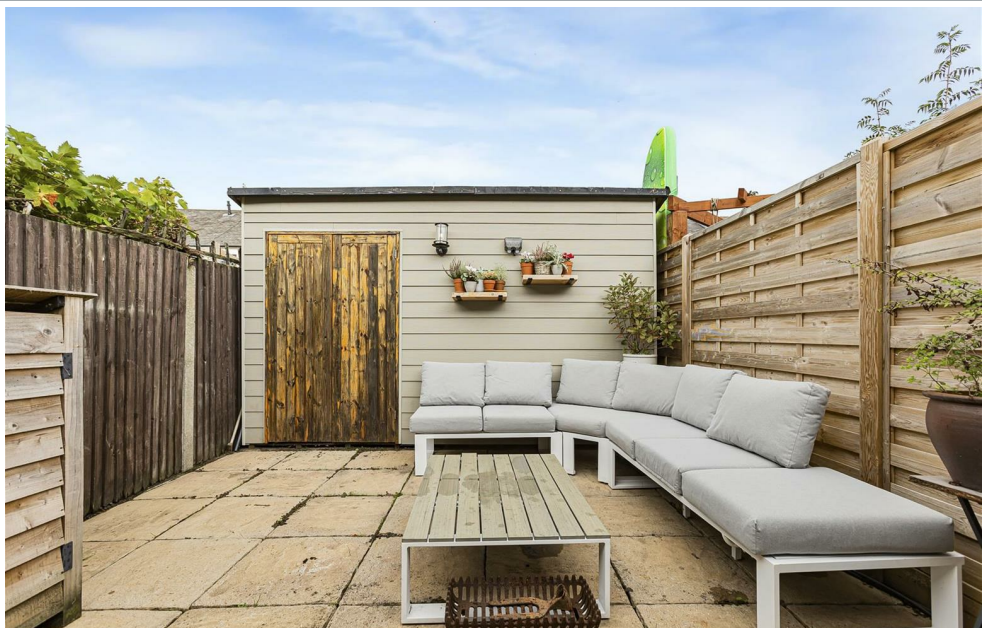


70 Fore Street, Hertford, Hertfordshire, SG14 1BY





70 Fore Street, Hertford, Hertfordshire, SG14 1BY

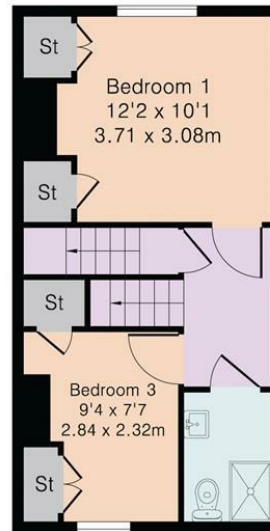


70 Fore Street, Hertford, Hertfordshire, SG14 1BY

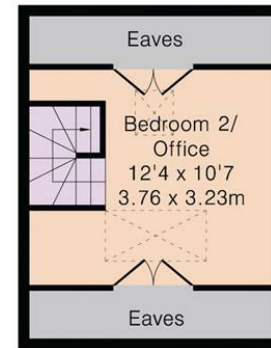
Approximate Gross Internal Area 865 sq ft – 80 sq m  
Ground Floor Area 434 sq ft – 40 sq m  
First Floor Area 302 sq ft – 28 sq m  
Second Floor Area 129 sq ft – 12 sq m



Ground Floor



First Floor



Second Floor

These particulars, whilst believed to be accurate are set out as a general outline only for guidance and do not constitute any part of an offer or contract. Intending purchasers should not rely on them as statements of representation of fact, but must satisfy themselves by inspection or otherwise as to their accuracy. No person in this firm's employment has the authority to make or give any representation or warranty in respect of the property.



[stevenoates.com](http://stevenoates.com)