



The Woodhall, Blakemore Manor, Hertford

SG14 2FZ

Prices From £595,000



stevenoates.com



Plot 52, The Woodhall Blakemore Manor, Hertford, Hertfordshire, SG14 2FZ

FINAL FEW PLOTS REMAINING - The Woodhall is an imposing 4 bedroom family home offering spacious accommodation of 1457 sqft, arranged over 3 floors. On the ground floor, there is a entrance hall, living room, fully fitted kitchen/diner and a downstairs wc. On the first floor, there is a large main bedroom with en-suite, along with another bedroom with French doors and Juliet balcony. On the second floor, there are 2 further bedrooms and a family bathroom. Externally, there are partially walled rear gardens and a garage with additional parking space. **READY TO VIEW TODAY**

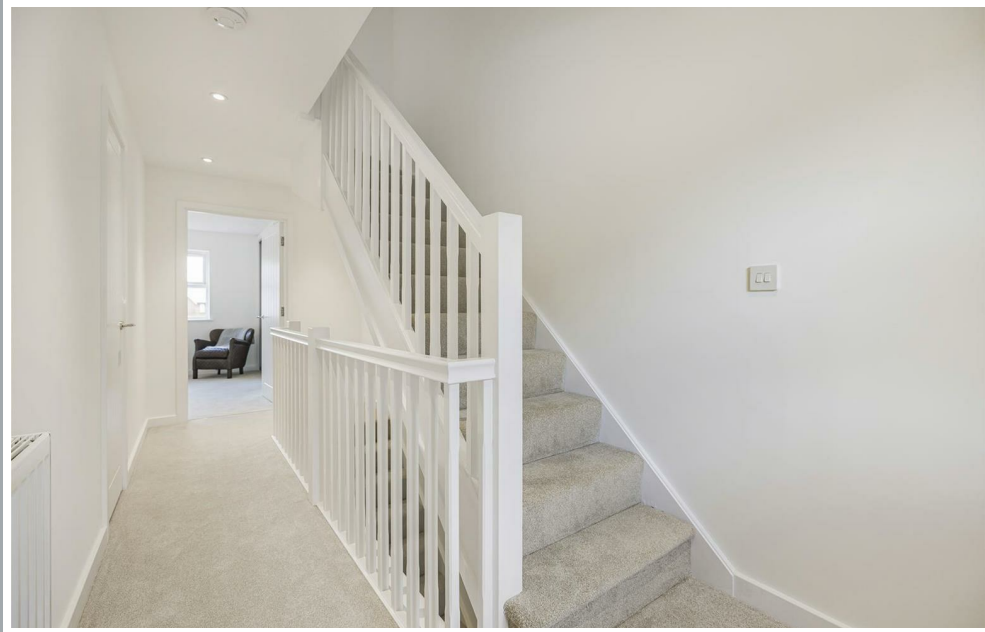
Blakesware Manor is perfectly location on the western side of Hertford, offering easy access to the A414 trunk road, which interlinks with the A10 and A1(m). Hertford North mainline train station is a short distance away, which provides services to London's Finsbury Park, Moorgate and Kings Cross. One of the crowning features of the development is it borders the truly beautiful and protected Panshanger Park, which offers excellent green space.



70 Fore Street, Hertford, Hertfordshire, SG14 1BY



70 Fore Street, Hertford, Hertfordshire, SG14 1BY



70 Fore Street, Hertford, Hertfordshire, SG14 1BY





70 Fore Street, Hertford, Hertfordshire, SG14 1BY



70 Fore Street, Hertford, Hertfordshire, SG14 1BY



70 Fore Street, Hertford, Hertfordshire, SG14 1BY



GROUND FLOOR

Kitchen/Dining Area
4.73m x 3.56m 15' 6" x 11' 8"

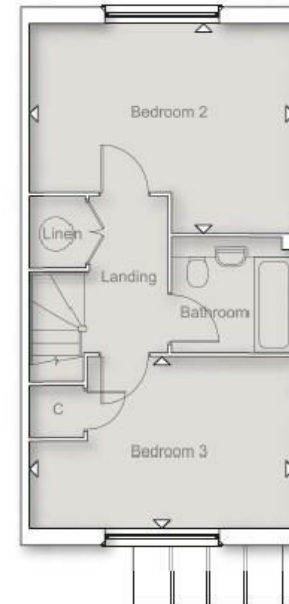
Living Room
5.79m x 3.71m 19' 0" x 12' 2"



FIRST FLOOR

Principal Bedroom
4.01m x 3.41m 13' 2" x 11' 2"

Bedroom 4/Study
4.04m x 2.69m 13' 3" x 8' 9"



SECOND FLOOR

Bedroom 2
4.73m x 3.74m 15' 6" x 12' 3"

Bedroom 3
4.73m x 3.04m 15' 6" x 10' 0"

These particulars, whilst believed to be accurate are set out as a general outline only for guidance and do not constitute any part of an offer or contract. Intending purchasers should not rely on them as statements of representation of fact, but must satisfy themselves by inspection or otherwise as to their accuracy. No person in this firm's employment has the authority to make or give any representation or warranty in respect of the property.



stvenoates.com