



9, Cedar Close, Hertford
SG14 1LU
Guide Price £725,000



stevenoates.com



9 Cedar Close, Hertford, Hertfordshire, SG14 1LU

An extended 4 bedroom link-detached family home located on a short distance from Hertford North station. The accommodation has been extended on the ground floor including a garage conversion into a large double bedroom with en-suite shower room. There is also a spacious entrance hall, large living room, kitchen/diner and a small utility with downstairs wc. On the first floor, there are 3 good size bedrooms and a large family bathroom. Externally, the property offers driveway parking and an attractive rear garden. Internal viewing is highly recommended.

Situated within a quiet residential development, the property is only a short distance from Hertford North train station (less than 0.1 miles) which serves London's Moorgate and Kings Cross. Hertford town centre is also close at hand offering a wide range of shops, restaurants and leisure facilities including a choice of public and private gyms.



70 Fore Street, Hertford, Hertfordshire, SG14 1BY



70 Fore Street, Hertford, Hertfordshire, SG14 1BY



70 Fore Street, Hertford, Hertfordshire, SG14 1BY





70 Fore Street, Hertford, Hertfordshire, SG14 1BY

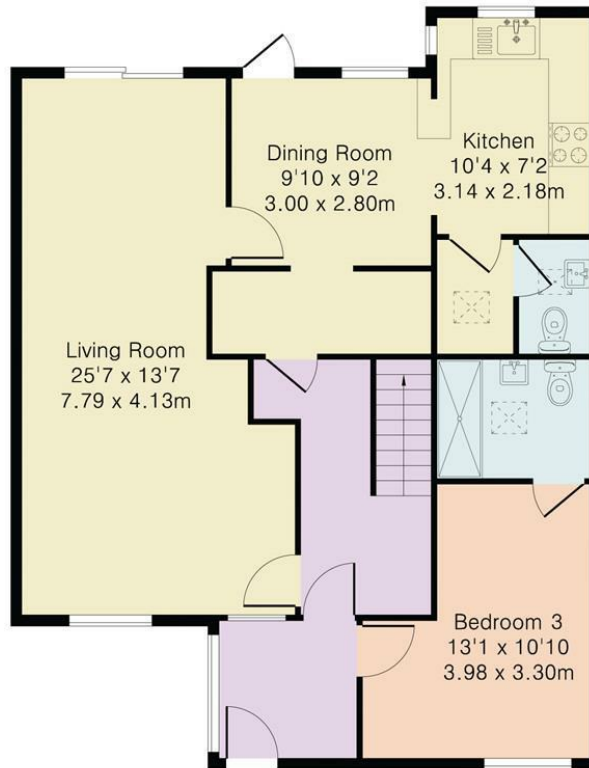


70 Fore Street, Hertford, Hertfordshire, SG14 1BY

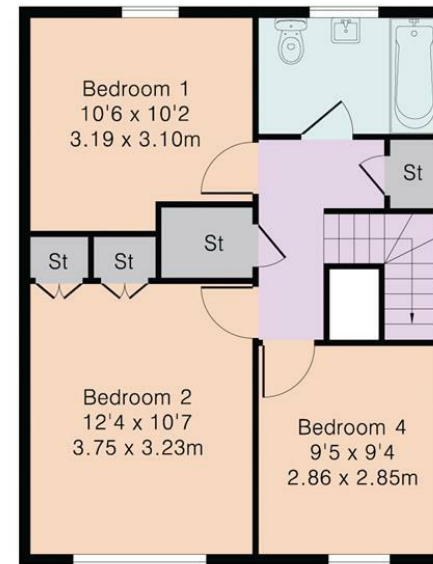


70 Fore Street, Hertford, Hertfordshire, SG14 1BY

Approximate Gross Internal Area 1330 sq ft – 123 sq m
Ground Floor Area 832 sq ft – 77 sq m
First Floor Area 498 sq ft – 46 sq m



Ground Floor



First Floor

These particulars, whilst believed to be accurate are set out as a general outline only for guidance and do not constitute any part of an offer or contract. Intending purchasers should not rely on them as statements of representation of fact, but must satisfy themselves by inspection or otherwise as to their accuracy. No person in this firm's employment has the authority to make or give any representation or warranty in respect of the property.



stevenoates.com