



2, Stoa Close, Hertford
SG13 7GH
Guide Price £689,500



stevenoates.com



2 Stoa Close, Hertford, SG13 7GH

Steven Oates are pleased to offer this attractive and extended three bedroom detached family home located within one of Foxholes most sought after cul-de-sac locations benefiting from spacious accommodation. The property is arranged over two levels. On the ground floor, there is a hallway, lounge open to dining room and conservatory, kitchen, utility room and ground floor cloakroom. On the first floor, there are three double bedrooms, the master of which has its own en-suite and family bathroom. Externally, there is off street parking and a secluded rear garden. Internal viewing highly recommended.

Located within one of Foxholes most sought after turning, the property is ideally situated for Hertford's favoured SG13 schooling. Hertford town centre is less than 2 miles away and provides an excellent choice of shops, coffee shops and restaurants along with two mainline train stations which serve London.



70 Fore Street, Hertford, Hertfordshire, SG14 1BY



70 Fore Street, Hertford, Hertfordshire, SG14 1BY



70 Fore Street, Hertford, Hertfordshire, SG14 1BY



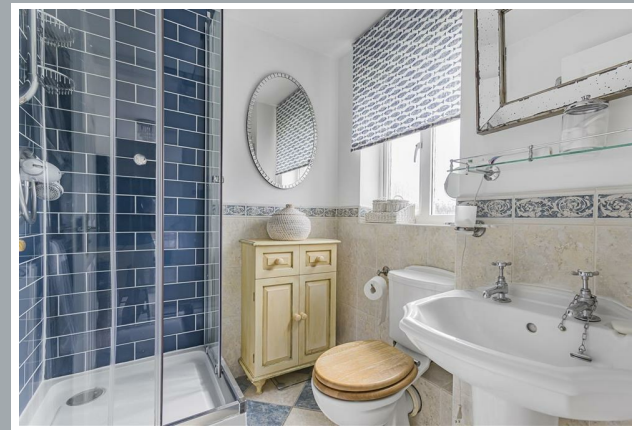
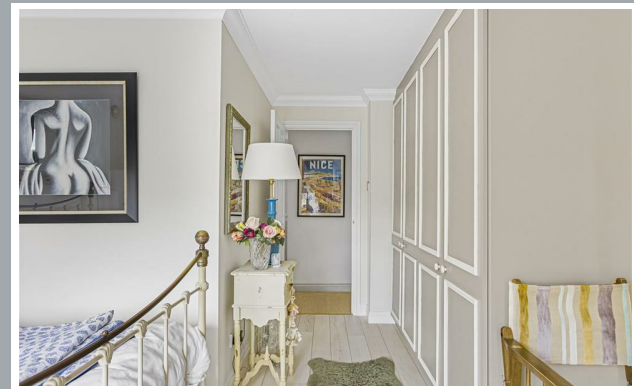
70 Fore Street, Hertford, Hertfordshire, SG14 1BY



70 Fore Street, Hertford, Hertfordshire, SG14 1BY



70 Fore Street, Hertford, Hertfordshire, SG14 1BY



70 Fore Street, Hertford, Hertfordshire, SG14 1BY

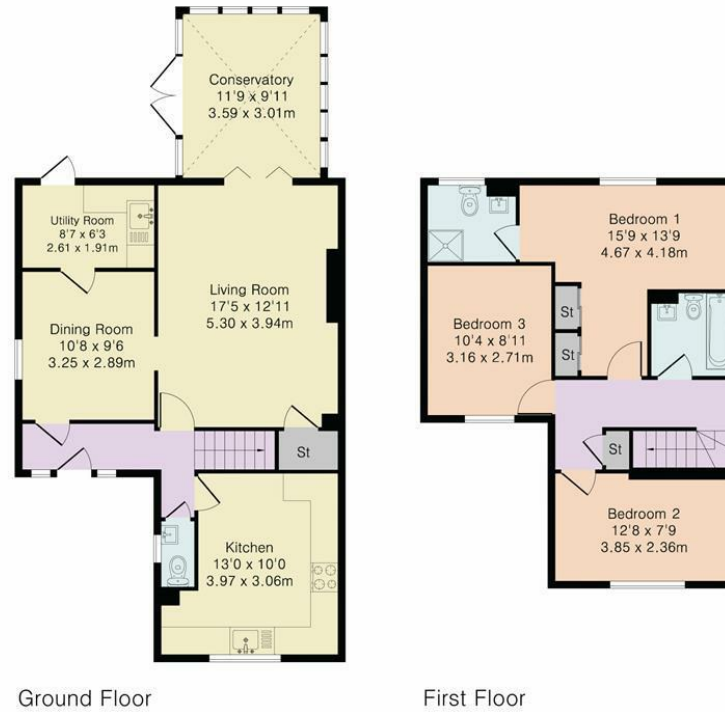


70 Fore Street, Hertford, Hertfordshire, SG14 1BY



70 Fore Street, Hertford, Hertfordshire, SG14 1BY

Approximate Gross Internal Area 1268 sq ft – 118 sq m
Ground Floor Area 754 sq ft – 70 sq m
First Floor Area 514 sq ft – 48 sq m



Although Pink Plan Ltd ensures the highest level of accuracy, measurements of doors, windows and rooms are approximate and no responsibility is taken for error, omission or misstatement. These plans are for representation purposes only as defined by RICS code of measuring practise. No guarantee is given on total square footage of the property within this plan. The figure icon is for initial guidance only and should not be relied on as a basis of valuation.



These particulars, whilst believed to be accurate are set out as a general outline only for guidance and do not constitute any part of an offer or contract. Intending purchasers should not rely on them as statements of representation of fact, but must satisfy themselves by inspection or otherwise as to their accuracy. No person in this firm's employment has the authority to make or give any representation or warranty in respect of the property.



stevenoates.com