



5, Wisdom Drive, Hertford

SG13 7RF

Guide Price £675,000



stevenoates.com



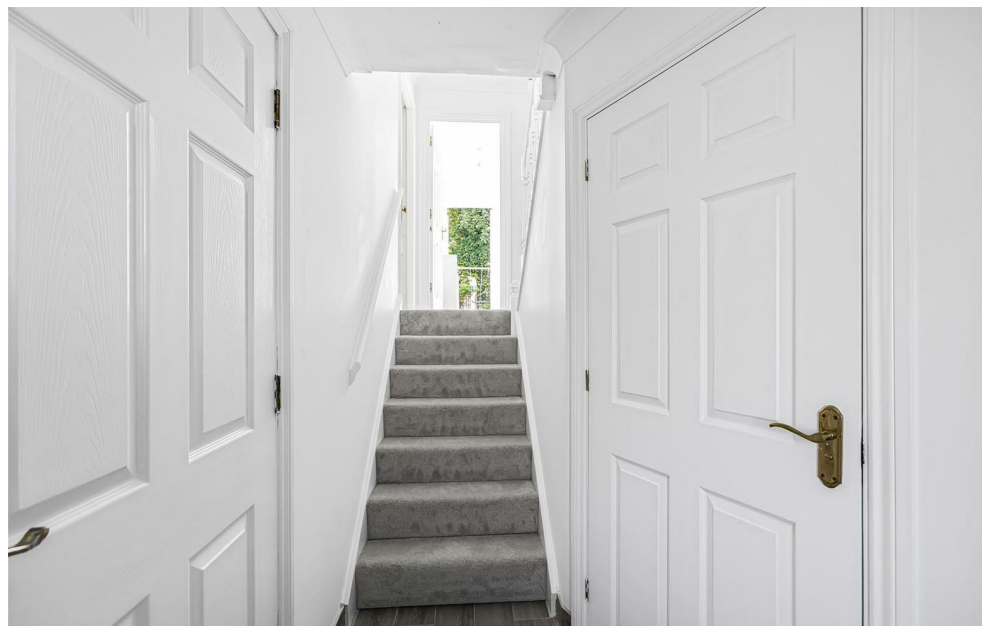
5 Wisdom Drive, Hertford, Herts, SG13 7RF

****VENDOR SUITED**** Steven Oates are delighted to offer this well presented four bedroom semi detached townhouse arranged over three floors situated within a gated development, convenient for Hertford Towns multiple shopping facilities, transport links, parks, restaurants and the desired SG13 school catchment. On the ground floor there is a cloakroom, bedroom 4/study, utility room and access to the garage. On the first floor, there is a guest cloakroom, modern kitchen/diner and lounge which has two balconies. On the second floor, there are three bedrooms, the master bedroom has its own en-suite and bespoke fitted wardrobes and additional family bathroom. Externally, there is off street parking for two cars and an up and over door to access the garage. To the rear, the garden has been landscaped and is South facing capturing afternoon sunshine to enjoy.

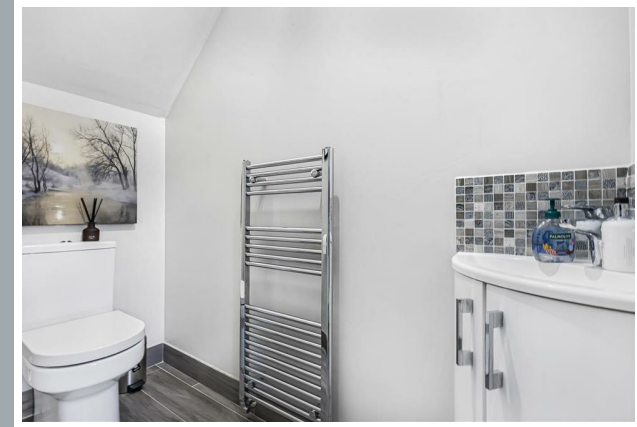
Located within this quiet gated development, the property offers convenient access to both Hertford town centre and Hertford East stations both a few minutes walk away. Hertford North station is also within an easy walking distance. There are excellent schools nearby for all ages including Simon Balle, Richard Hale and Abel Smith.



70 Fore Street, Hertford, Hertfordshire, SG14 1BY



70 Fore Street, Hertford, Hertfordshire, SG14 1BY



70 Fore Street, Hertford, Hertfordshire, SG14 1BY

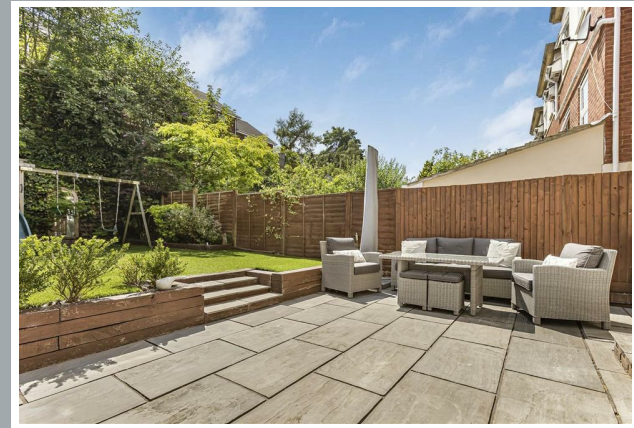




70 Fore Street, Hertford, Hertfordshire, SG14 1BY

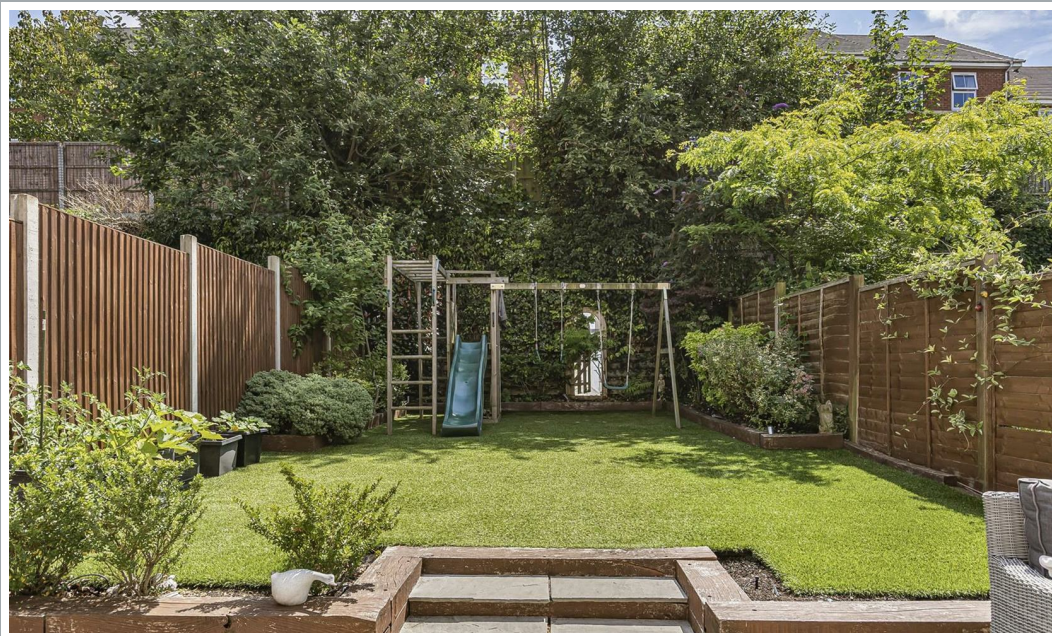


70 Fore Street, Hertford, Hertfordshire, SG14 1BY



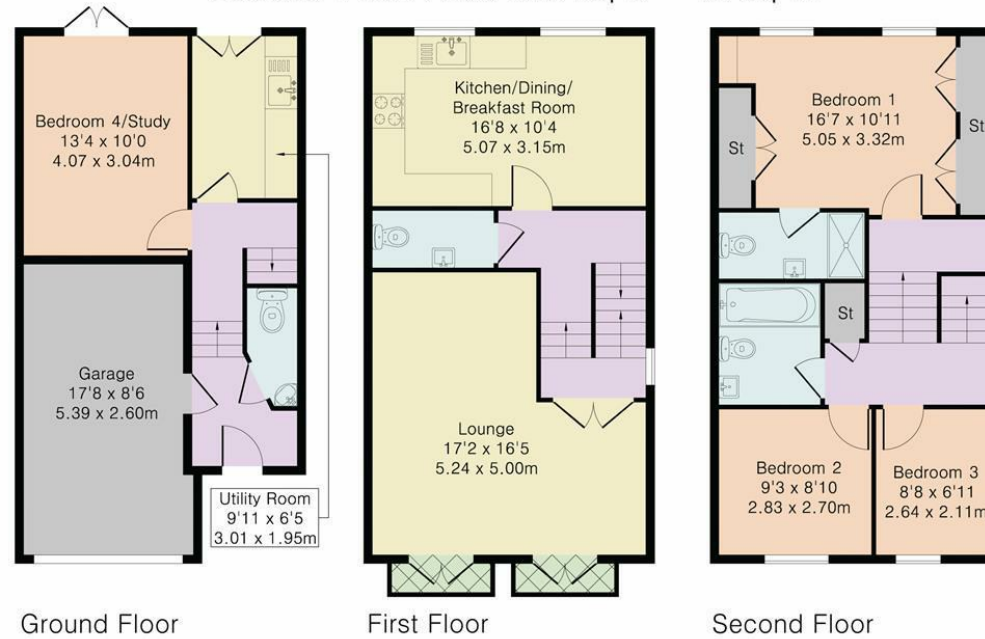
70 Fore Street, Hertford, Hertfordshire, SG14 1BY





70 Fore Street, Hertford, Hertfordshire, SG14 1BY

Approximate Gross Internal Area 1541 sq ft – 143 sq m
 Ground Floor Area 491 sq ft – 45 sq m
 First Floor Area 525 sq ft – 49 sq m
 Second Floor Area 525 sq ft – 49 sq m



Although Pink Plan Ltd ensures the highest level of accuracy, measurements of doors, windows and rooms are approximate and no responsibility is taken for error, omission or misstatement. These plans are for representation purposes only as defined by RICS code of measuring practise. No guarantee is given on total square footage of the property within this plan. The figure icon is for initial guidance only and should not be relied on as a basis of valuation.



These particulars, whilst believed to be accurate are set out as a general outline only for guidance and do not constitute any part of an offer or contract. Intending purchasers should not rely on them as statements of representation of fact, but must satisfy themselves by inspection or otherwise as to their accuracy. No person in this firms employment has the authority to make or give any representation or warranty in respect of the property.

