



Stockings Lane, Little Berkhamsted

SG13 8LW

Price Guide £975,000



[stevenoates.com](http://stevenoates.com)



## The Old Stables, Stockings Lane, Little Berkhamsted, Herts, SG13 8LW

A truly stunning detached character home converted from an original Victorian stables located within this highly sought after quiet country lane in the heart of the picturesque village of Little Berkhamsted. The accommodation which offers a light and airy complimented by mostly vaulted ceilings, includes a large living room, stunning kitchen/dining room, utility/boot room, large main bedroom with a walk-in wardrobe & en-suite bathroom, 2 additional double bedrooms and a further shower room. Externally, there is ample driveway parking for at least 3 cars and the professionally landscaped rear garden benefit from a sunny southerly aspect and a high degree of seclusion.

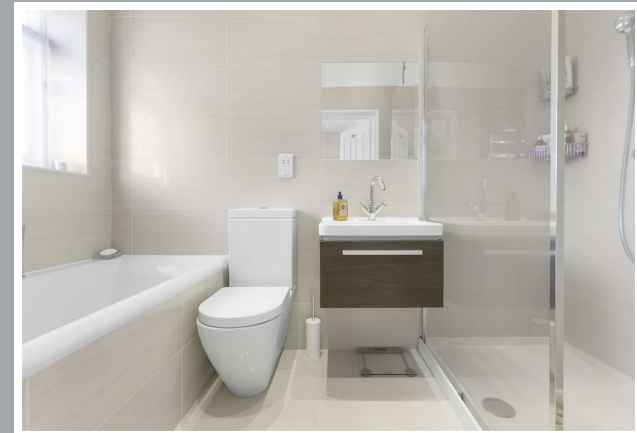
This stunning character home is located within a quiet picturesque country lane within the centre of one of the area's most sought after villages. The village of Little Berkhamsted is only a short distance away providing a village pub and shop, with the nearby towns of Hertford and Cuffley are both a short drive away providing a wide choice of shops, restaurants and mainline train station serving London and The City.



70 Fore Street, Hertford, Hertfordshire, SG14 1BY



70 Fore Street, Hertford, Hertfordshire, SG14 1BY

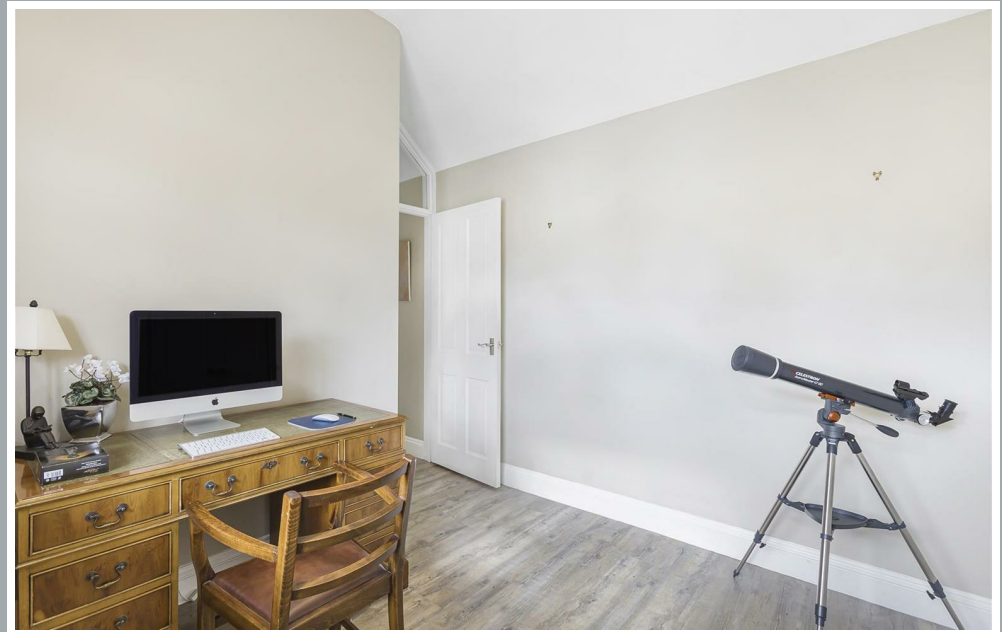


70 Fore Street, Hertford, Hertfordshire, SG14 1BY





70 Fore Street, Hertford, Hertfordshire, SG14 1BY



70 Fore Street, Hertford, Hertfordshire, SG14 1BY





70 Fore Street, Hertford, Hertfordshire, SG14 1BY

70 Fore Street, Hertford, Hertfordshire, SG14 1BY

Approximate Gross Internal Area 1316 sq ft – 122 sq m



Ground Floor



Although Pink Plan Ltd ensures the highest level of accuracy, measurements of doors, windows and rooms are approximate and no responsibility is taken for error, omission or misstatement. These plans are for representation purpose only as defined by RICS code of measuring practice. No guarantee is given on total square footage of the property within this plan. The figure icon is for initial guidance only and should not be relied on as a basis of valuation.

These particulars, whilst believed to be accurate are set out as a general outline only for guidance and do not constitute any part of an offer or contract. Intending purchasers should not rely on them as statements of representation of fact, but must satisfy themselves by inspection or otherwise as to their accuracy. No person in this firm's employment has the authority to make or give any representation or warranty in respect of the property.



[stevenoates.com](http://stevenoates.com)