



11, Parker Avenue, Bengo

SG14 3LA

Offers In Excess Of £510,000



stevenoates.com



11 Parker Avenue, Bengeo, Herts, SG14 3LA

Steven Oates are pleased to offer this spacious four-bedroom family home which is perfectly situated on this extremely popular residential street right in the heart of Bengeo. This charming home is a true gem, Boasting two reception rooms, four generous size bedrooms, this property offers ample space for entertaining guests or simply relaxing with your family. The extended accommodation provides a deceptively spacious interior, with the potential for further improvements to truly make it your own. With a well-maintained child-friendly rear garden, this home is perfect for families looking for a safe outdoor space to enjoy. Convenience is key with parking available for two vehicles on the driveway, ensuring you never have to worry about finding a spot. The property's location in the popular Bengeo area adds to its appeal, offering a desirable and vibrant community to become a part of which is only a short distance to Hertford North Train Station and Hertford Town Centre. Don't miss out on the opportunity to own this wonderful family home with endless possibilities for creating your dream living space.

Situated within the heart of Bengeo, this extended family home offers easy access to Hartham Common and idyllic river walks, whilst Hertford town centre is also within easy reach. There are a choice of excellent schools for all ages and for the commuter, both Hertford East and Hertford North are within close distance with Hertford North being (1m) away.



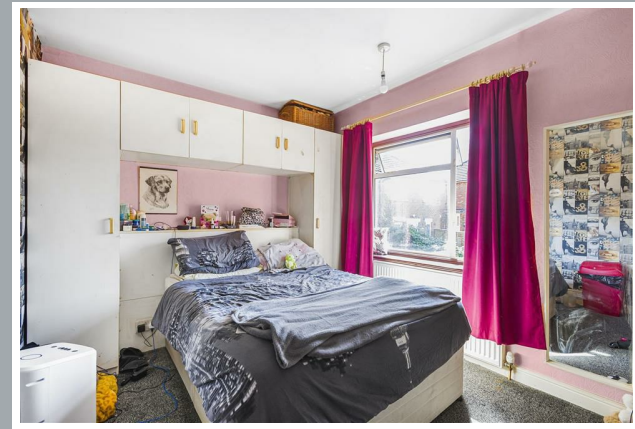
70 Fore Street, Hertford, Hertfordshire, SG14 1BY



70 Fore Street, Hertford, Hertfordshire, SG14 1BY



70 Fore Street, Hertford, Hertfordshire, SG14 1BY



70 Fore Street, Hertford, Hertfordshire, SG14 1BY

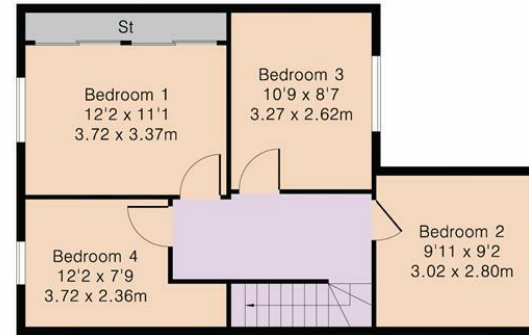


70 Fore Street, Hertford, Hertfordshire, SG14 1BY

Approximate Gross Internal Area 1091 sq ft – 101 sq m
Ground Floor Area 597 sq ft – 55 sq m
First Floor Area 494 sq ft – 46 sq m



Ground Floor



First Floor



Although Pink Plan Ltd ensures the highest level of accuracy, measurements of doors, windows and rooms are approximate and no responsibility is taken for error, omission or misstatement. These plans are for representation purposes only as defined by RICS code of measuring practise. No guarantee is given on total square footage of the property within this plan. The figure icon is for initial guidance only and should not be relied on as a basis of valuation.



These particulars, whilst believed to be accurate are set out as a general outline only for guidance and do not constitute any part of an offer or contract. Intending purchasers should not rely on them as statements of representation of fact, but must satisfy themselves by inspection or otherwise as to their accuracy. No person in this firms employment has the authority to make or give any representation or warranty in respect of the property.



stevenoates.com