



26C, London Road, Hertford
SG13 7PN
Guide Price £525,000



stevenoates.com



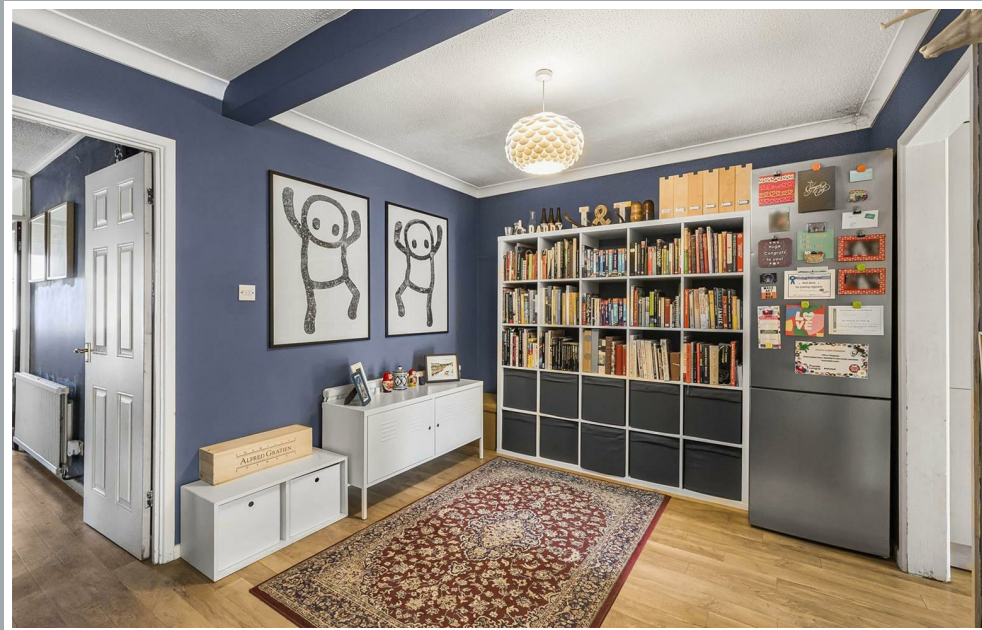
26C London Road, Hertford Heath, Hertford, SG13 7PN

****Chain Free**** Steven Oates are delighted to offer this deceptively spacious five bedroom extended family home located within a small private turning in the very popular Village of Hertford Heath. The property comprises of an Entrance Hall, study, ground floor cloakroom, dining and living area, 16ft Kitchen, five bedrooms including a huge master bedroom with en-suite and a further family Bathroom. To the rear are manageable gardens and to the front provides parking for two cars. Haileybury public school is a stone's throw away as well as many good state schools in Hertford and Ware. The village has an excellent primary school also.

The property sits in the centre of the popular village of Hertford Heath just a mile or two from Hertford and close to the A10. The village is a thriving local community (see the excellent village web site www.hertfordheath.gov.uk) with good local facilities including village shop, village hall, church, garage, four good pubs, and plenty of sports and social clubs. The village is a short drive from Hertford East Station and is also a short drive from the A10, so it is ideal for commuters.



70 Fore Street, Hertford, Hertfordshire, SG14 1BY



70 Fore Street, Hertford, Hertfordshire, SG14 1BY

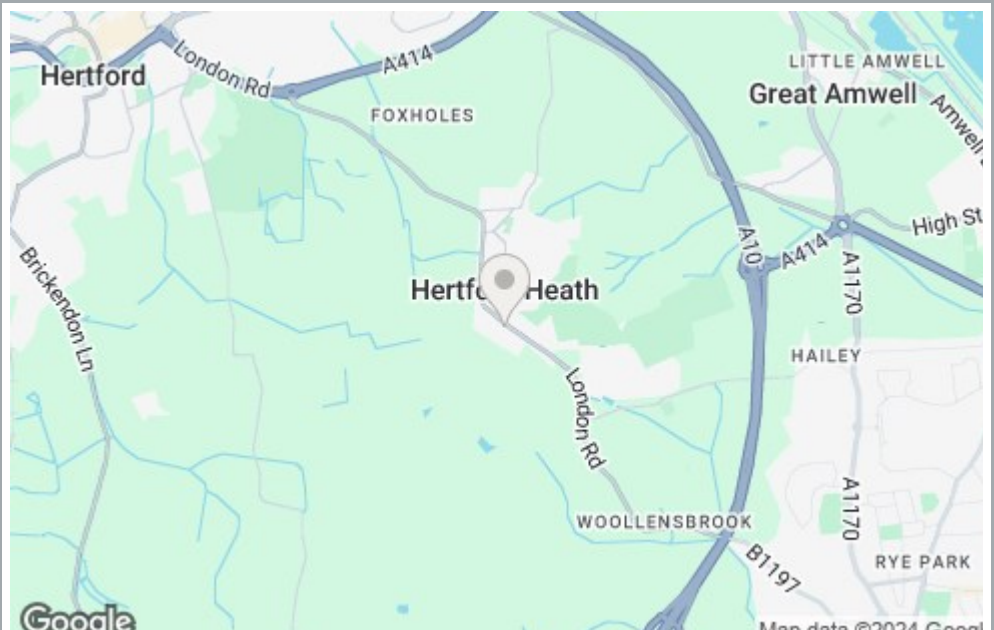


70 Fore Street, Hertford, Hertfordshire, SG14 1BY





70 Fore Street, Hertford, Hertfordshire, SG14 1BY

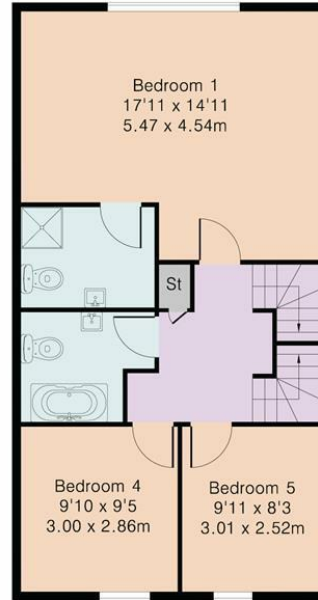


70 Fore Street, Hertford, Hertfordshire, SG14 1BY

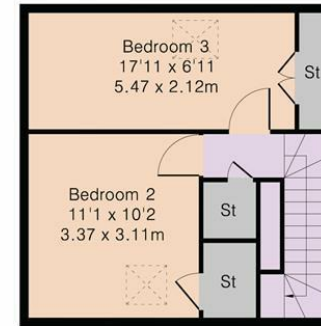


Ground Floor

Approximate Gross Internal Area 1728 sq ft – 160 sq m
 Ground Floor Area 776 sq ft – 72 sq m
 First Floor Area 624 sq ft – 58 sq m
 Top Floor Area 328 sq ft – 30 sq m



First Floor



Top Floor



Although Pink Plan Ltd ensures the highest level of accuracy, measurements of doors, windows and rooms are approximate and no responsibility is taken for error, omission or misstatement. These plans are for representation purposes only as defined by RICS code of measuring practise. No guarantee is given on total square footage of the property within this plan. The figure icon is for initial guidance only and should not be relied on as a basis of valuation.



These particulars, whilst believed to be accurate are set out as a general outline only for guidance and do not constitute any part of an offer or contract. Intending purchasers should not rely on them as statements of representation of fact, but must satisfy themselves by inspection or otherwise as to their accuracy. No person in this firms employment has the authority to make or give any representation or warranty in respect of the property.



stevenoates.com