



The Coach House, Fanhams Hall Road, Ware
SG12 7PU
Guide Price £795,000



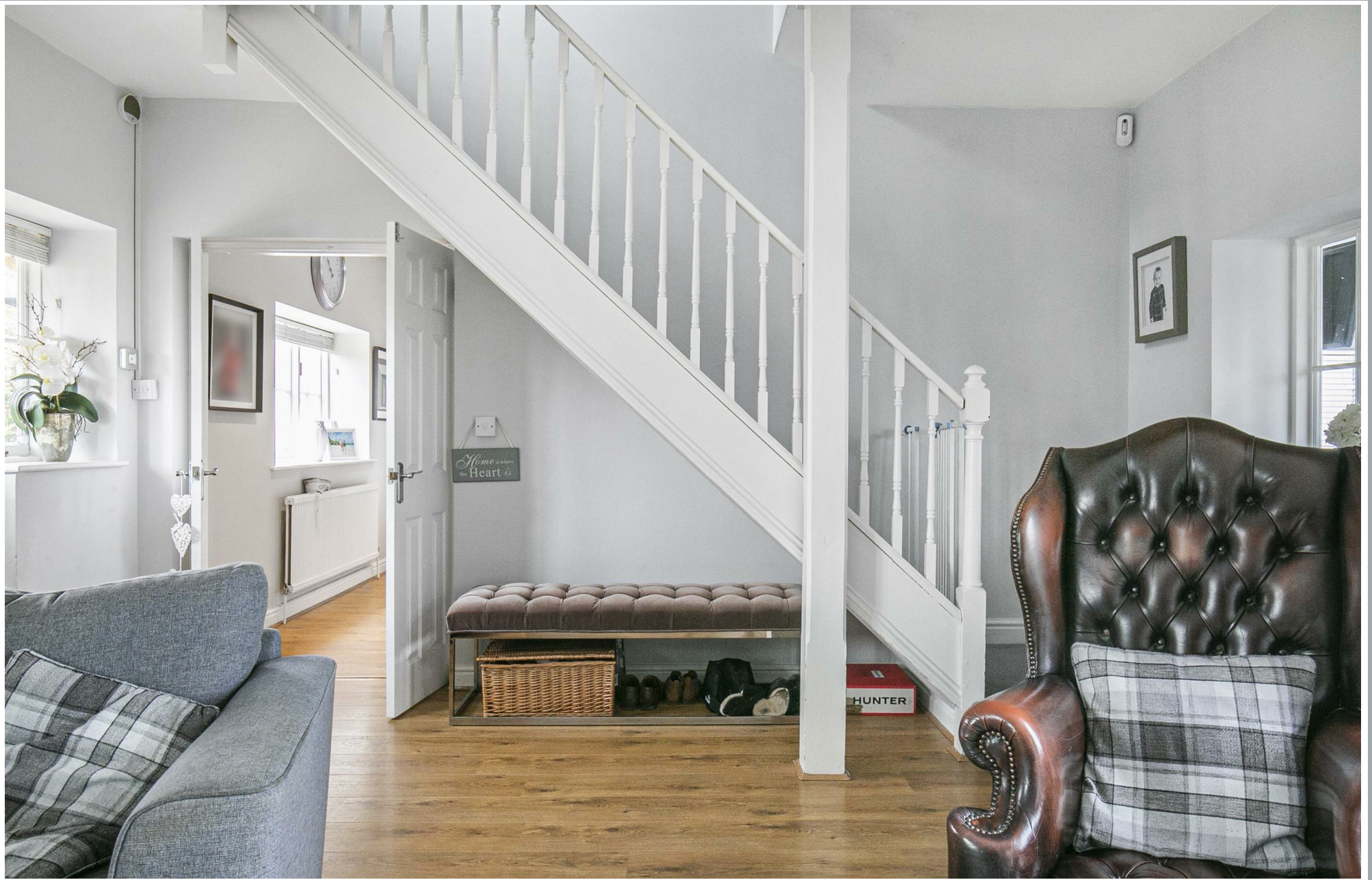
stevenoates.com



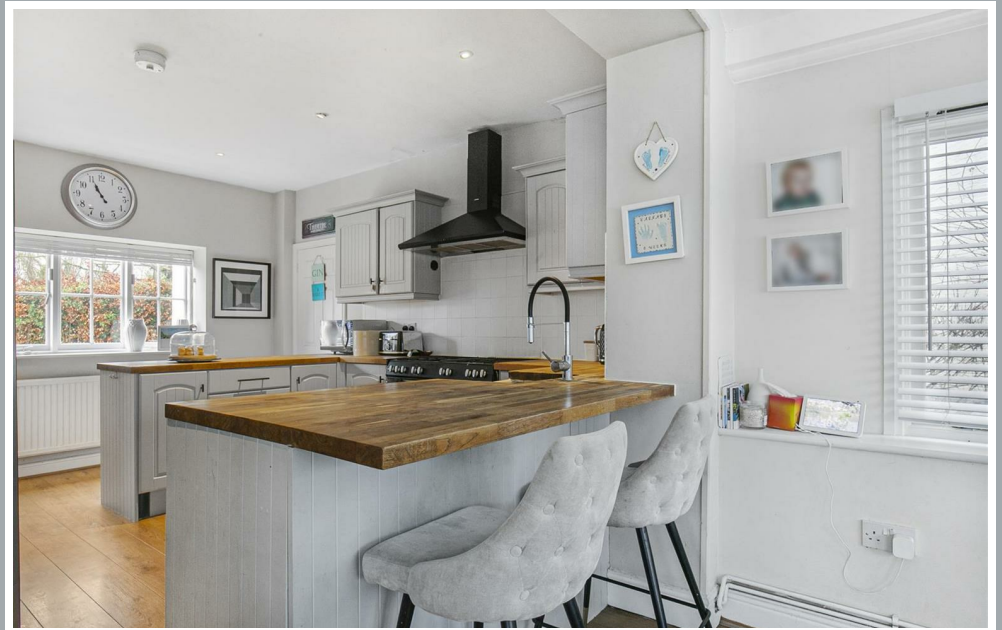
The Coach House Fanhams Hall Road, Ware, Hertfordshire, SG12 7PU

A charming 4 bedroom detached period family home offering flexible and stylish accommodation comprising of 2 good size living rooms, a kitchen/breakfast room, a play room, downstairs wc and bedroom on the ground floor. On the first floor, there are 3 good size bedrooms and 3 en-suites. Externally, there is ample driveway parking, gardens and a detached double garage.

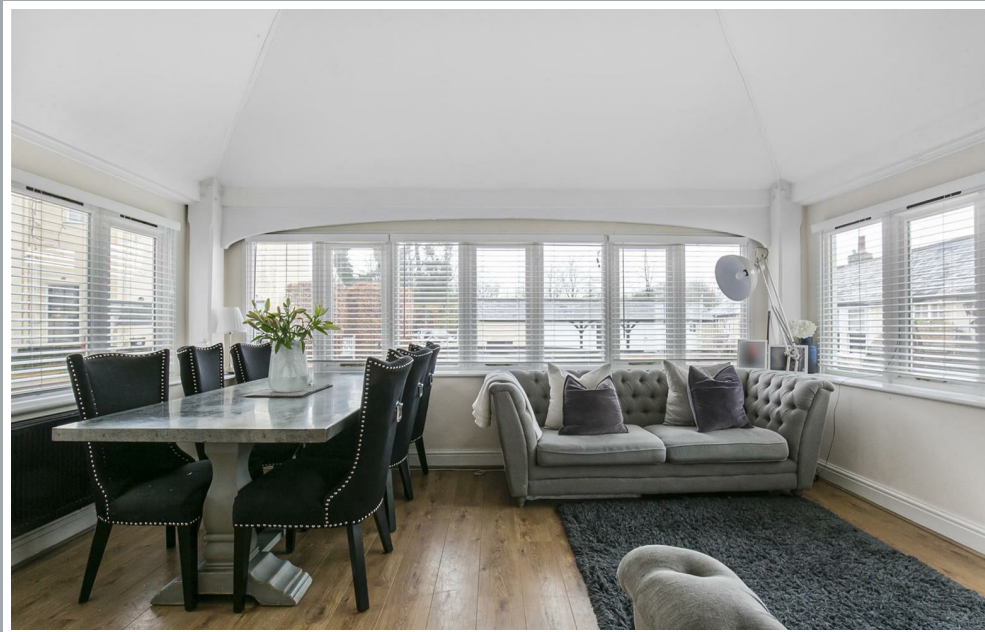
The property occupies a rural position on the edge of Ware itself providing a real sense of retreat, yet retains easy access to Ware's thriving High Street and mainline train station which offers fast and regular services to London's Liverpool Street.



70 Fore Street, Hertford, Hertfordshire, SG14 1BY



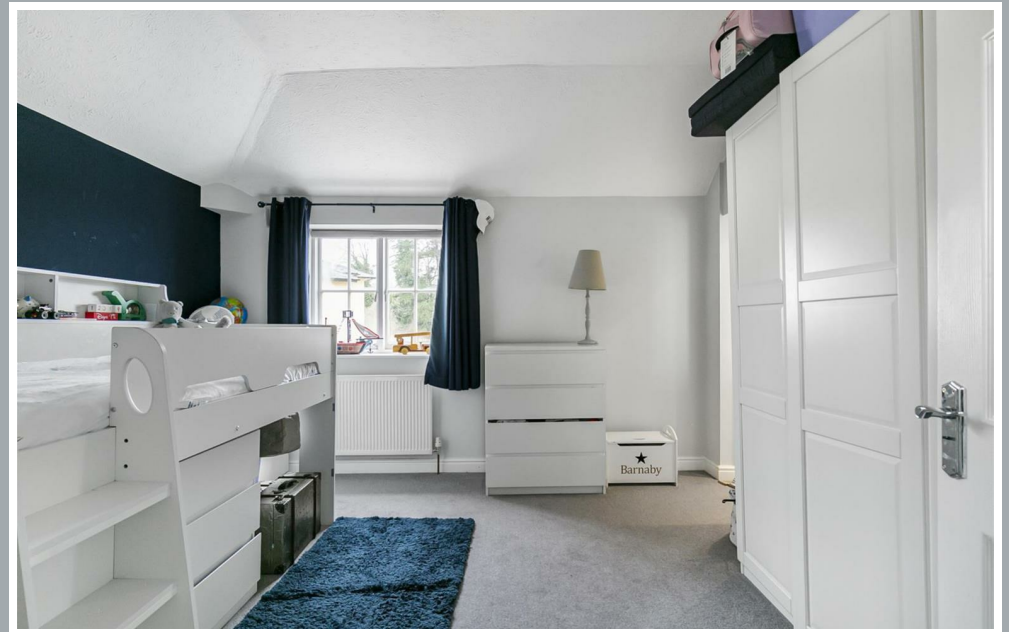
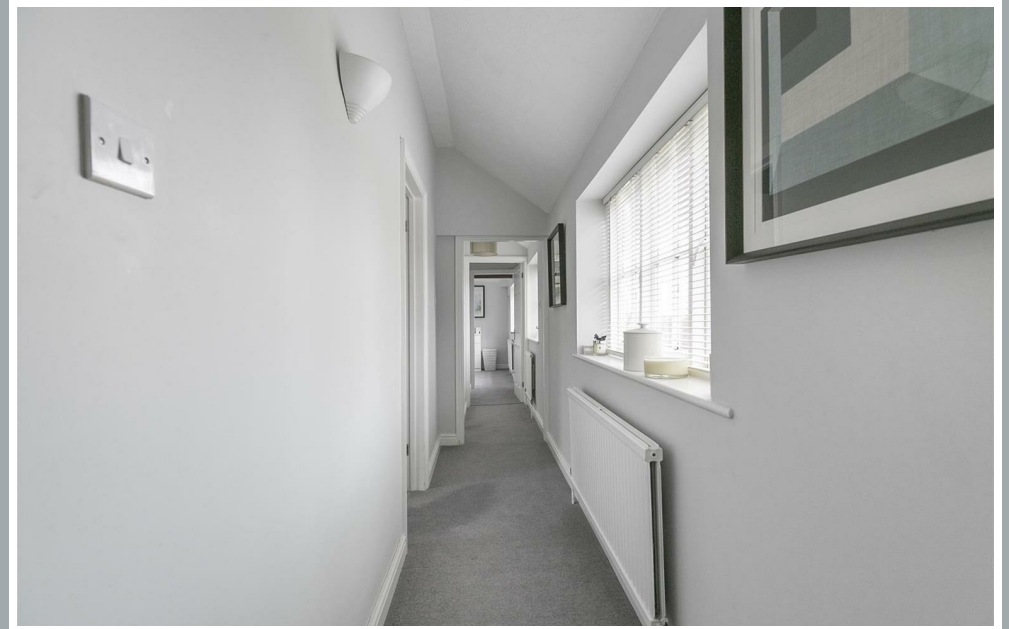
70 Fore Street, Hertford, Hertfordshire, SG14 1BY



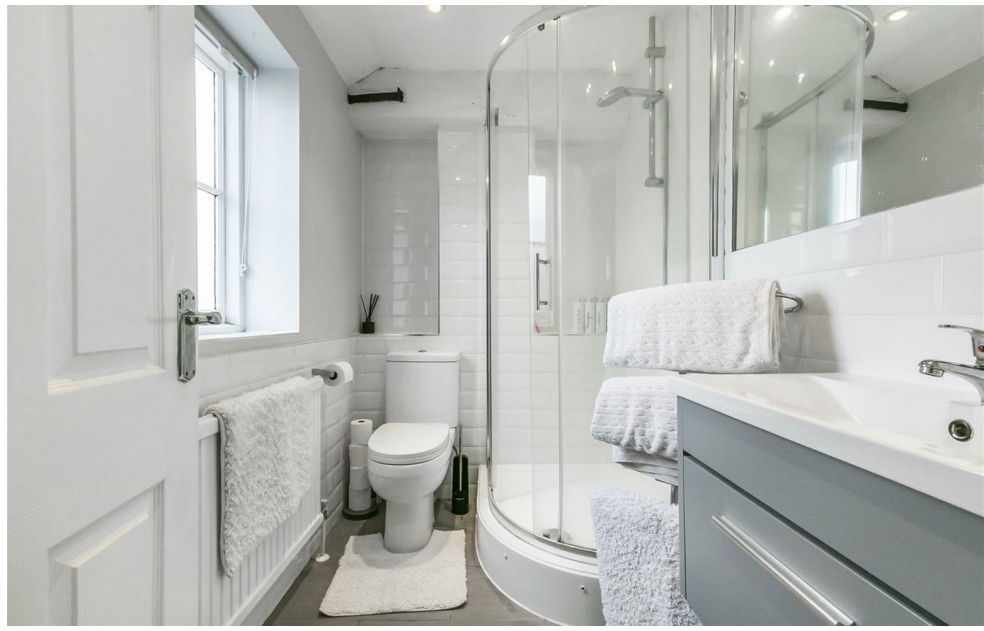
70 Fore Street, Hertford, Hertfordshire, SG14 1BY



70 Fore Street, Hertford, Hertfordshire, SG14 1BY



70 Fore Street, Hertford, Hertfordshire, SG14 1BY

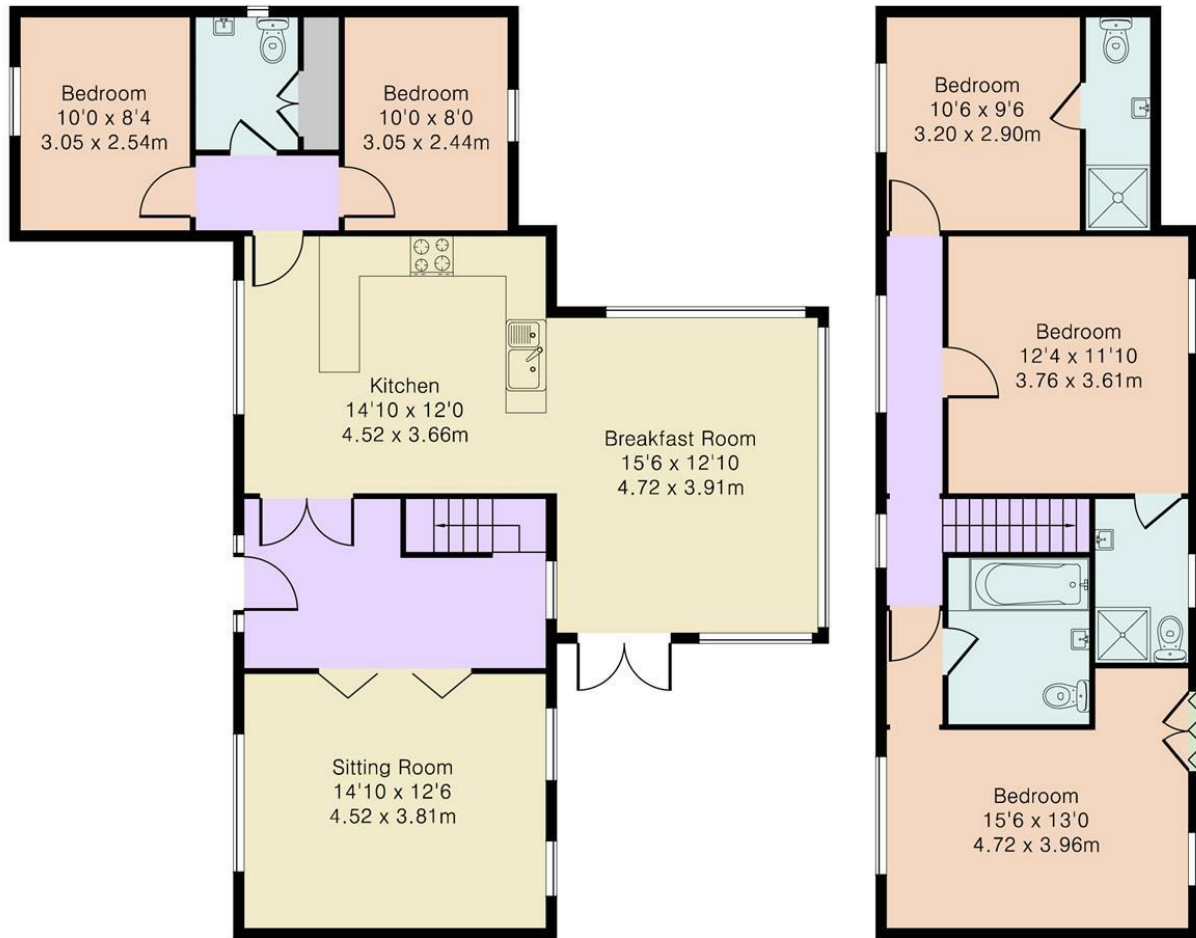


70 Fore Street, Hertford, Hertfordshire, SG14 1BY



70 Fore Street, Hertford, Hertfordshire, SG14 1BY

Approximate Gross Internal Area 1615 sq ft – 150 sq m
Ground Floor Area 969 sq ft – 90 sq m
First Floor Area 646 sq ft – 60 sq m



Ground Floor

First Floor

These particulars, whilst believed to be accurate are set out as a general outline only for guidance and do not constitute any part of an offer or contract. Intending purchasers should not rely on them as statements of representation of fact, but must satisfy themselves by inspection or otherwise as to their accuracy. No person in this firm's employment has the authority to make or give any representation or warranty in respect of the property.



stevenoates.com