



2 Globe Court, Bengo Street, Bengo

SG14 3HA

Asking Price £300,000



stevenoates.com



2 Globe Court Bengo Street, Bengo, SG14 3HA

Steven Oates are delighted to offer this spacious two bedroom first floor maisonette situated in a popular location, convenient for Hertford Town Centres multiple facilities. The property benefits from its own front door, loft access, 900 plus year lease with a peppercorn ground rent, two double bedrooms, modern kitchen/diner, allocated parking space, own section of garden and garage en bloc. The property is ideal for a first time buy or investment purchase. Internal viewing recommended.

Globe Court is located within the heart of leafy Bengo, only 0.4 miles away from Hertford town centre. The excellent green space in Hartham Common is also close by, as are a choice of state and private schooling. For commuters, both Hertford East and Hertford North are within easy reach offering train services to London's Liverpool Street, Moorgate and Kings Cross. The exciting regeneration of Hertford town's riverside development is due for completion in 2024 and will provide new shops, along with riverside restaurants and bars. The redevelopment of Hertford theatre is due for completion in 2024 helping the town centre to enjoy a fresh buzz.



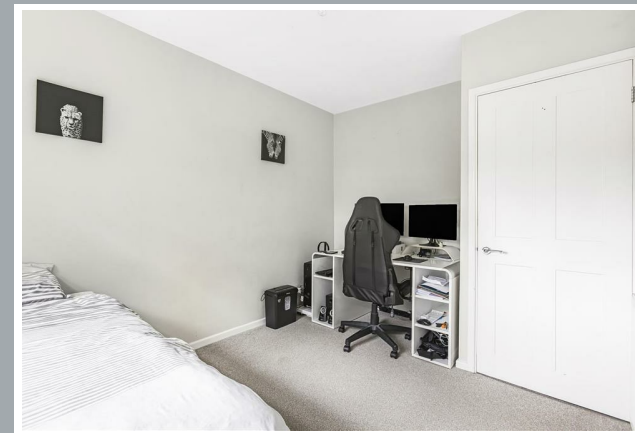
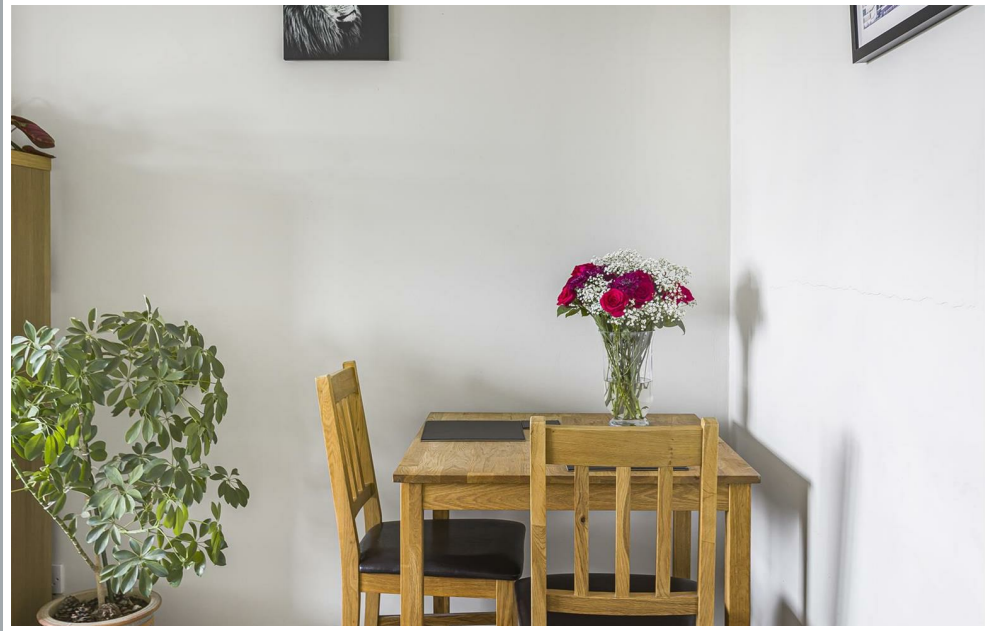
70 Fore Street, Hertford, Hertfordshire, SG14 1BY



70 Fore Street, Hertford, Hertfordshire, SG14 1BY



70 Fore Street, Hertford, Hertfordshire, SG14 1BY

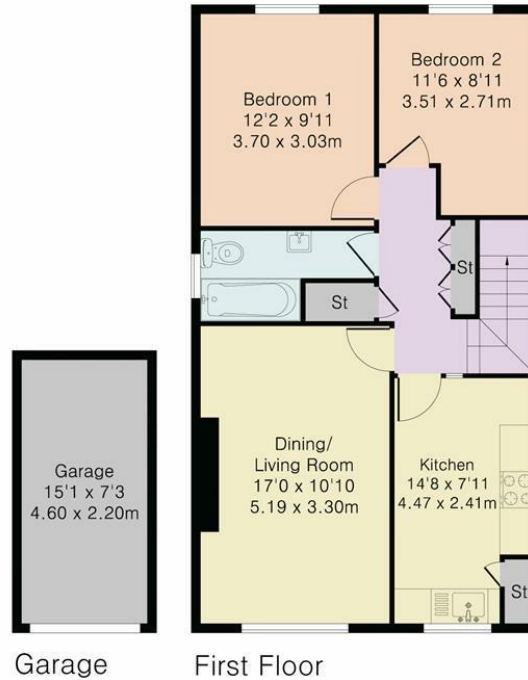


70 Fore Street, Hertford, Hertfordshire, SG14 1BY



70 Fore Street, Hertford, Hertfordshire, SG14 1BY

Approximate Gross Internal Area 775 sq ft – 72 sq m
First Floor Area 666 sq ft – 62 sq m
Garage Area 109 sq ft – 10 sq m



Although Pink Plan Ltd ensures the highest level of accuracy, measurements of doors, windows and rooms are approximate and no responsibility is taken for error, omission or misstatement. These plans are for representation purposes only as defined by RICS code of measuring practise. No guarantee is given on total square footage of the property within this plan. The figure icon is for initial guidance only and should not be relied on as a basis of valuation.



These particulars, whilst believed to be accurate are set out as a general outline only for guidance and do not constitute any part of an offer or contract. Intending purchasers should not rely on them as statements of representation of fact, but must satisfy themselves by inspection or otherwise as to their accuracy. No person in this firm's employment has the authority to make or give any representation or warranty in respect of the property.



stevenoates.com