



Highfield House, 2 Highfield Road, Hertford

SG13 8UJ

Guide Price £2,000,000



stevenoates.com



Highfield House 2 Highfield Road, Hertford, Herts, SG13 8UJ

An outstanding 5/6 bedroom detached family home set within an enviable position on one of Hertford's most sought after residential road close to Hertford's favoured schooling and the town centre. The generous accommodation of over 3000 sqft comprises of 3 principal reception rooms, a large garden room, kitchen/breakfast room and a utility on the ground floor. On the first and second floors are 5 bedrooms, 3 bathrooms and an additional bedroom currently used as another dressing room, all complimented by spacious hallways and landings. Externally, the property is approached by a gravel driveway providing plenty of parking, a double garage and mature gardens that surround the house.

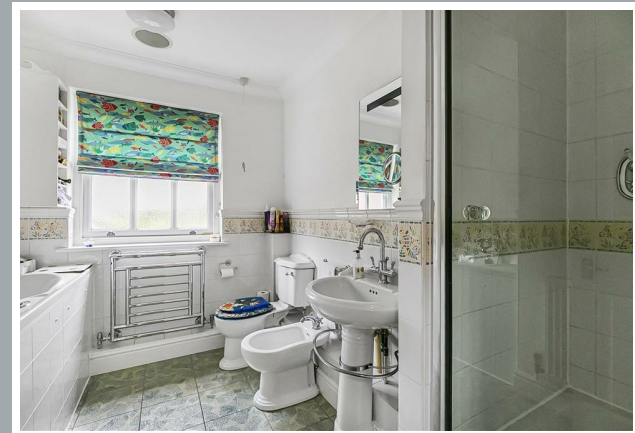
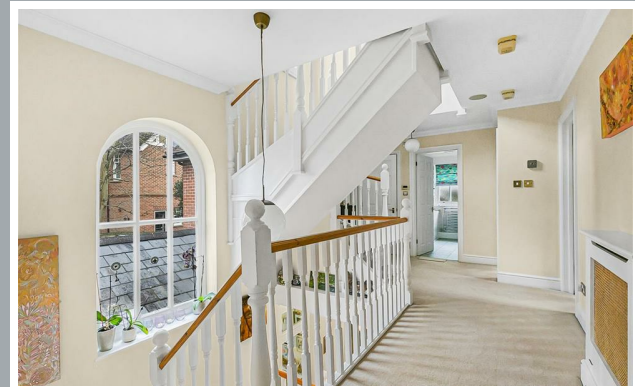
Situated within Hertford's premier southside, Highfield Road has been recognised for years and one of the town's most sought after residential roads. The property is only a short stroll from Hertford town centre which provides an excellent choice of local shops, bars and restaurants, along with two mainline train stations which both offer fast services to London. The property is also ideally located for Hertford's favoured SG13 schooling for all ages including Abel Smith JMI, Simon Balle and Richard Hale, as well as conveniently positioned for reputable independent schools like Duncombe, Heath Mount (both primary) and Haileybury College.



70 Fore Street, Hertford, Hertfordshire, SG14 1BY



70 Fore Street, Hertford, Hertfordshire, SG14 1BY



70 Fore Street, Hertford, Hertfordshire, SG14 1BY





70 Fore Street, Hertford, Hertfordshire, SG14 1BY



70 Fore Street, Hertford, Hertfordshire, SG14 1BY



70 Fore Street, Hertford, Hertfordshire, SG14 1BY





70 Fore Street, Hertford, Hertfordshire, SG14 1BY

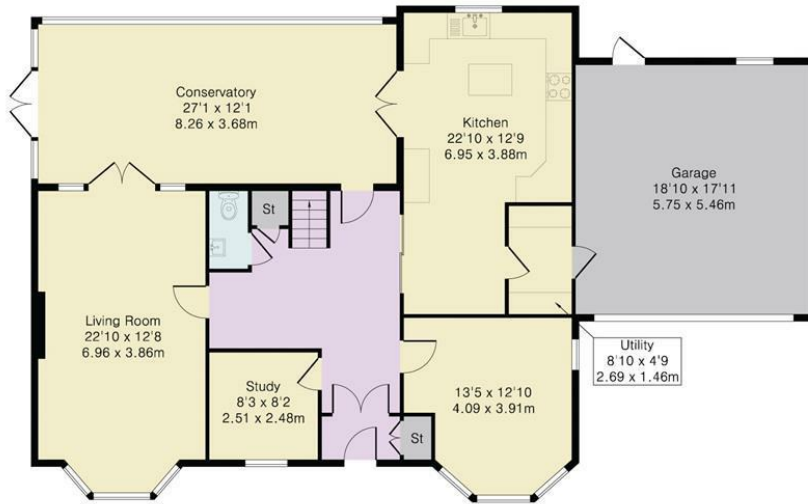


70 Fore Street, Hertford, Hertfordshire, SG14 1BY



Second Floor

Approximate Gross Internal Area 3178 sq ft – 295 sq m
 Ground Floor Area 1719 sq ft – 160 sq m
 First Floor Area 1027 sq ft – 95 sq m
 Second Floor Area 432 sq ft – 40 sq m



Ground Floor



First Floor

These particulars, whilst believed to be accurate are set out as a general outline only for guidance and do not constitute any part of an offer or contract. Intending purchasers should not rely on them as statements of representation of fact, but must satisfy themselves by inspection or otherwise as to their accuracy. No person in this firm's employment has the authority to make or give any representation or warranty in respect of the property.



stevenoates.com