



9, The Pastures, Bishop's Stortford  
CM23 2FU  
Guide Price £1,850,000



[stevenoates.com](http://stevenoates.com)





## 9 The Pastures, Bishop's Stortford, CM23 2FU

PRIME LOCATION ON NORTH WEST SIDE OF TOWN - An exceptional 5 bedroom detached family home located within this highly sought after location on the leafy north west side of town. The stylish accommodation comprises of a large entrance hall with downstairs wc, large living room, playroom/study, spacious family sized kitchen and a separate utility room on the ground floor. On the first floor, there are 4 good size bedrooms and 4 bathrooms, whilst on the second floor, there is an additional guest bedroom and large family bathroom. Externally, there is ample driveway parking, a detached double garage with studio room above and immaculate rear gardens providing a high degree of seclusion.

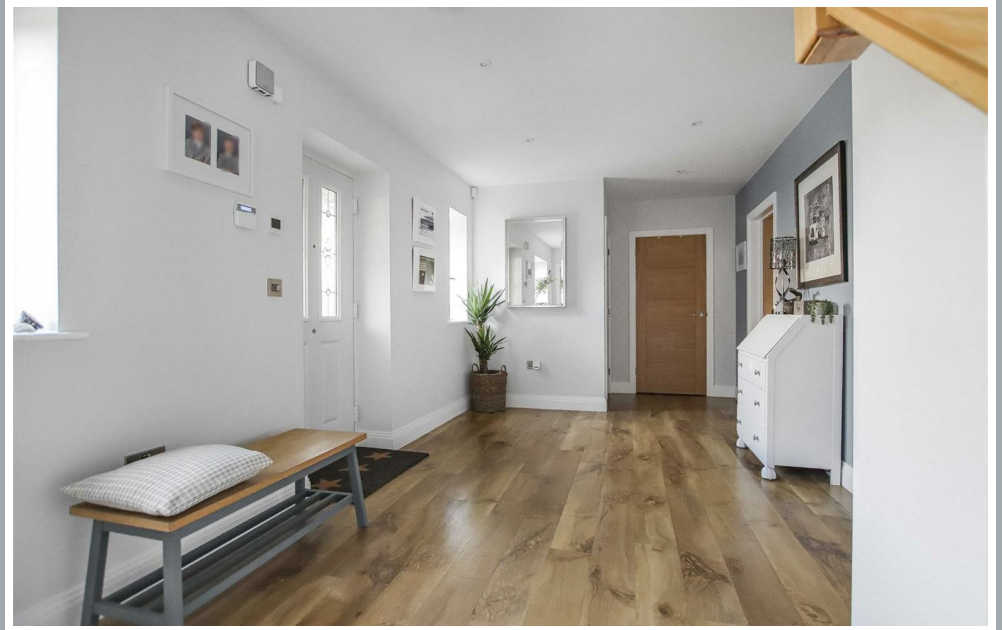
The Pastures is a small and exclusive development of just 12 substantial detached homes nestled amongst mature surroundings within one of Bishop's Stortford's most sought after areas on the North West side of town. The property is only a short distance from the town centre which offers a wide choice of shops and restaurants, along with Bishop's Stortford train station with fast services to London (approximately 38 mins). There are excellent state and independent schools close by including Bishop's Stortford College.





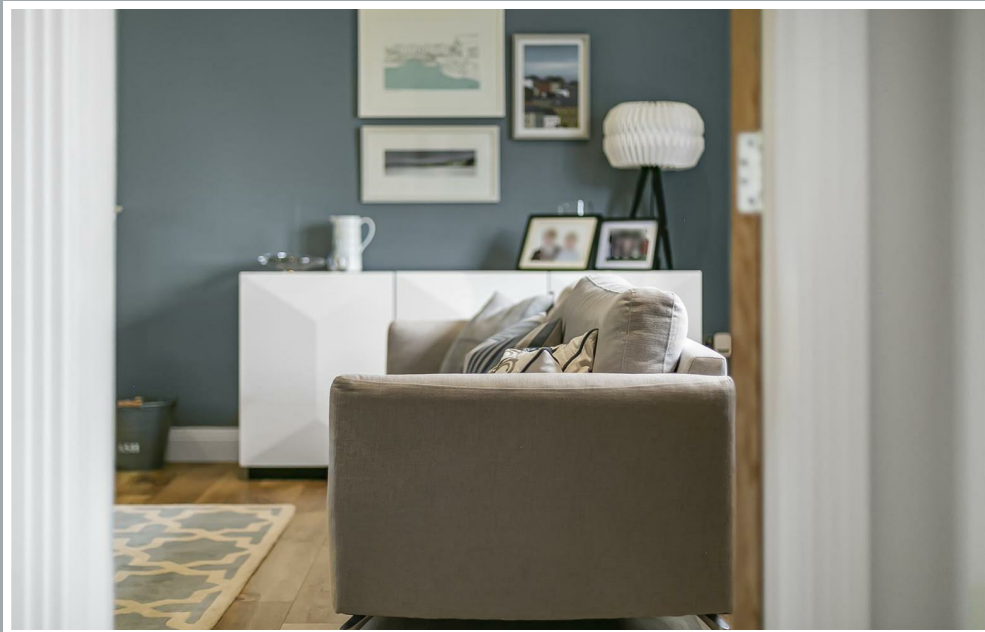
70 Fore Street, Hertford, Hertfordshire, SG14 1BY





70 Fore Street, Hertford, Hertfordshire, SG14 1BY



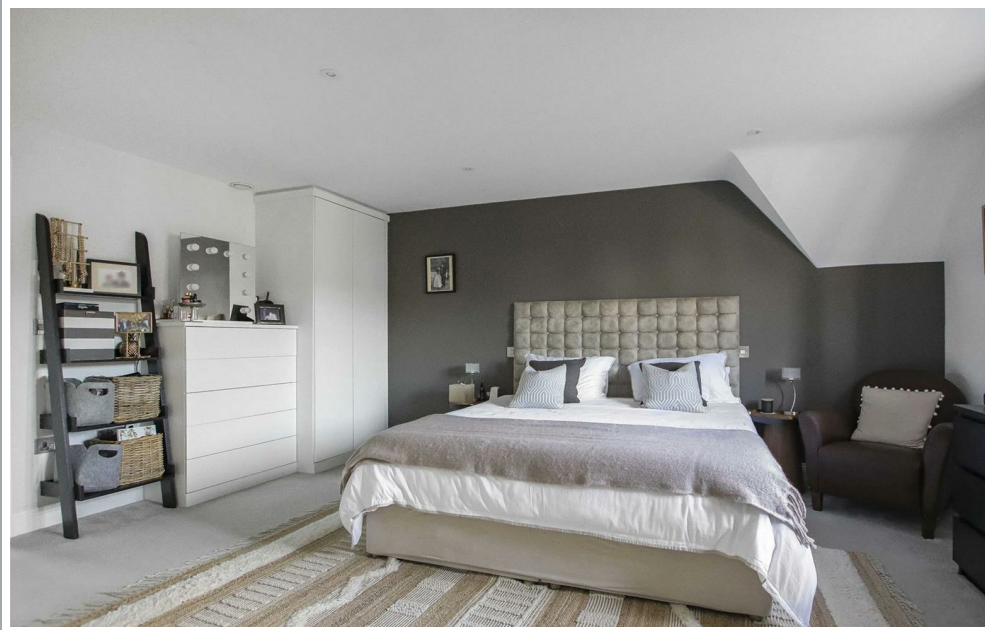


70 Fore Street, Hertford, Hertfordshire, SG14 1BY



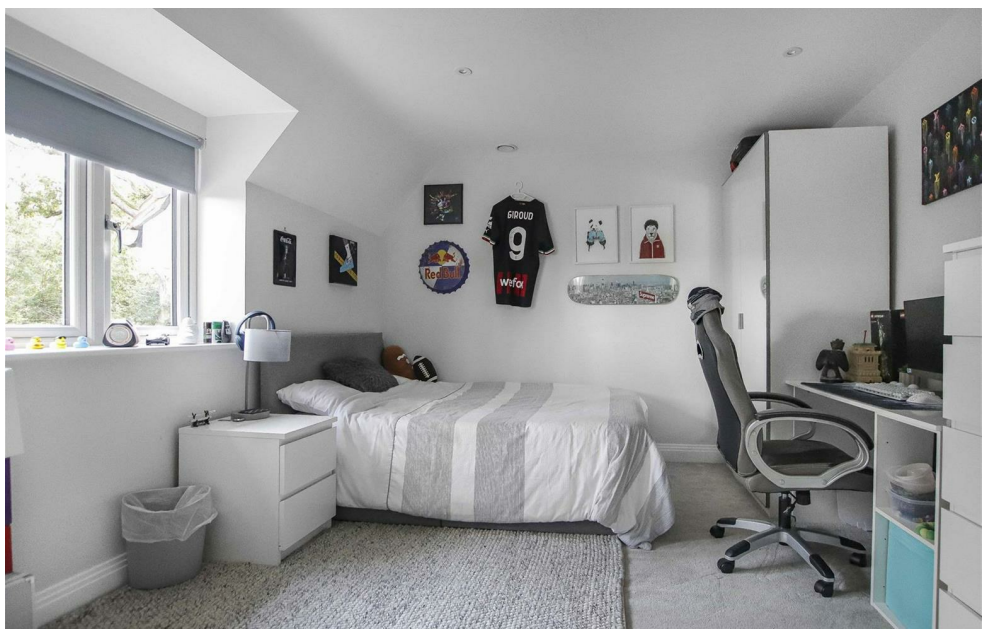






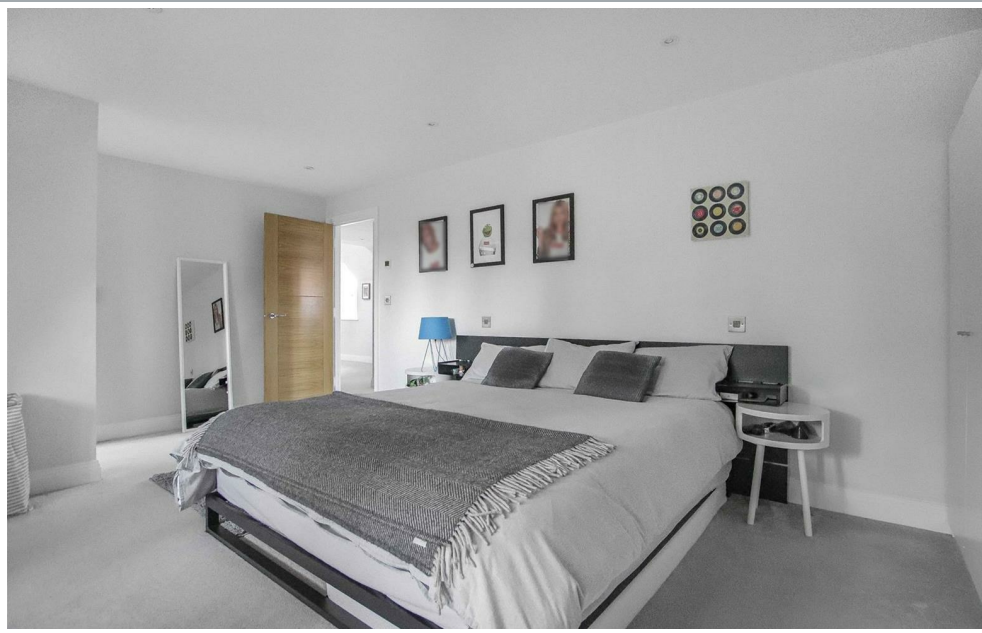
70 Fore Street, Hertford, Hertfordshire, SG14 1BY





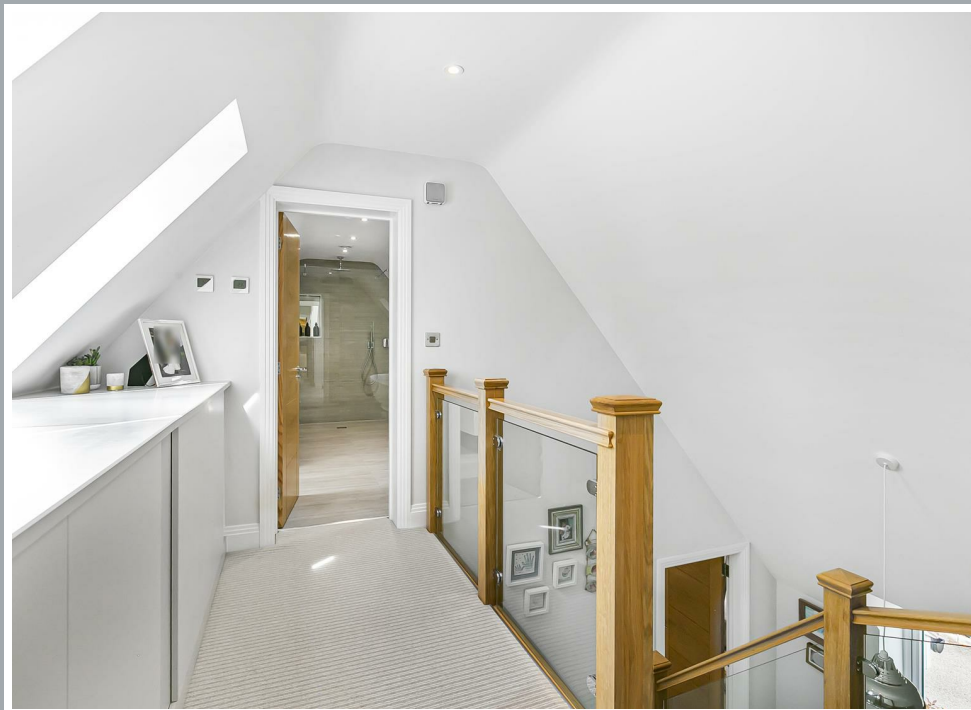
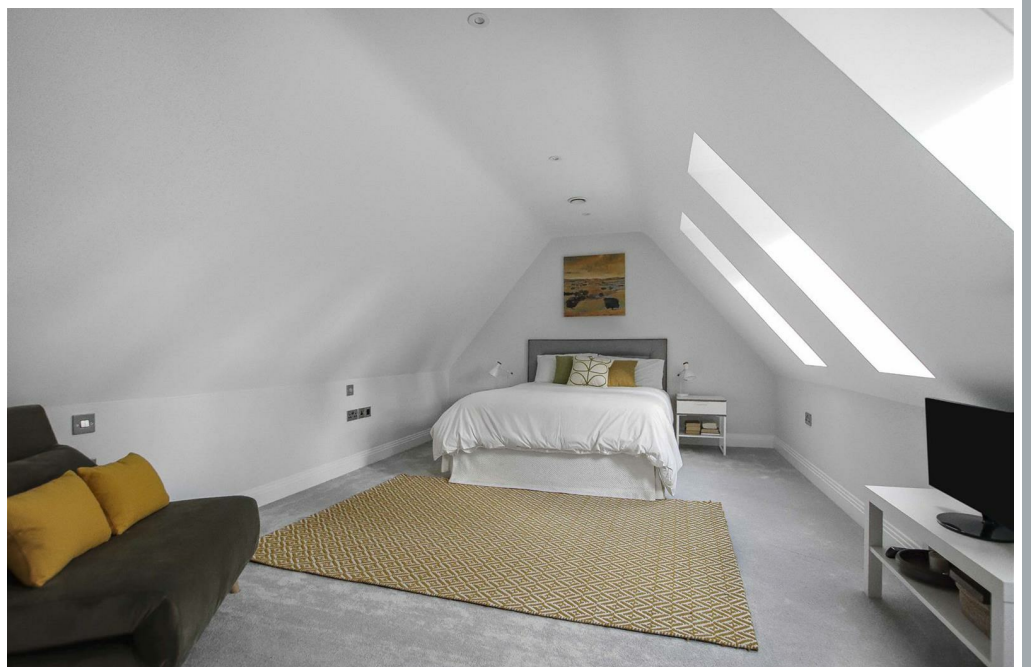
70 Fore Street, Hertford, Hertfordshire, SG14 1BY





70 Fore Street, Hertford, Hertfordshire, SG14 1BY



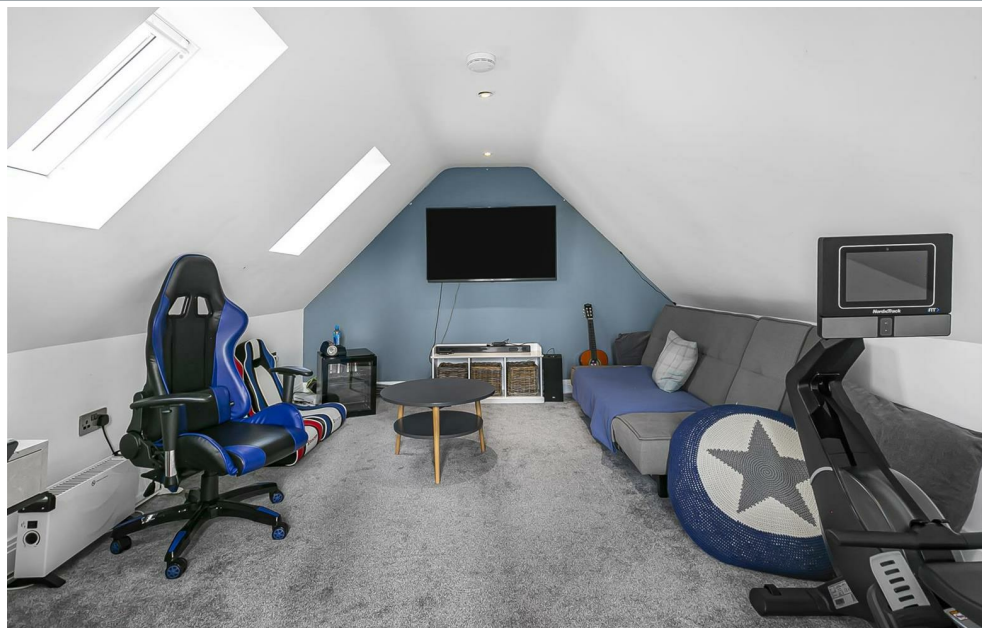






70 Fore Street, Hertford, Hertfordshire, SG14 1BY





70 Fore Street, Hertford, Hertfordshire, SG14 1BY





Although Pink Plan Ltd ensures the highest level of accuracy, measurements of doors, windows and rooms are approximate and no responsibility is taken for error, omission or misstatement. These plans are for representation purposes only as defined by RICS code of measuring practise. No guarantee is given on total square footage of the property within this plan. The figure icon is for initial guidance only and should not be relied on as a basis of valuation.



stevenoates.com

These particulars, whilst believed to be accurate are set out as a general outline only for guidance and do not constitute any part of an offer or contract. Intending purchasers should not rely on them as statements of representation of fact, but must satisfy themselves by inspection or otherwise as to their accuracy. No person in this firm's employment has the authority to make or give any representation or warranty in respect of the property.