



15, Constables Way, Hertford

SG13 7AF

Guide Price £325,000



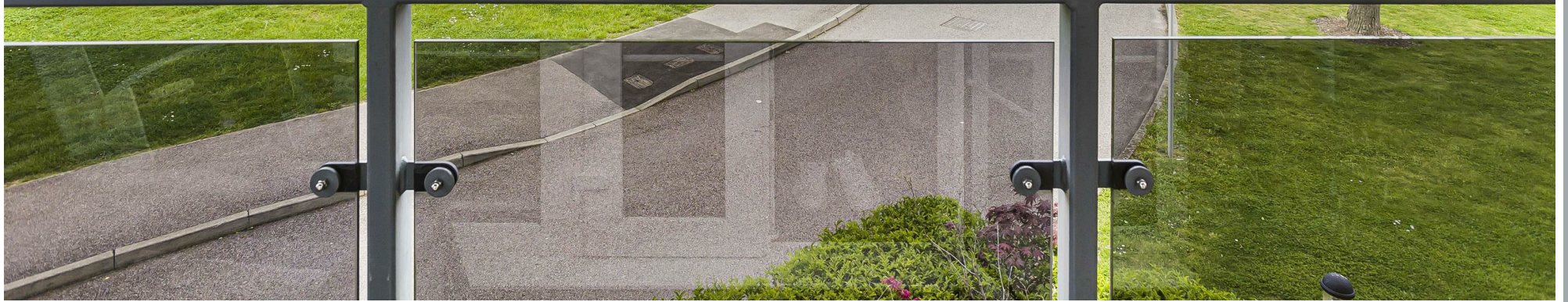
stevenoates.com



15 Constables Way, Hertford, SG13 7AF

****CHAIN FREE - KEYS HELD**** Steven Oates are delighted to present this two double bedroom first floor apartment situated in a popular development, convenient for Hertford Towns multiple facilities and transport links into London. This property offers bright living space featuring dual aspect balconies overlooking attractive communal gardens. Other Benefits include; en-suite to master bedroom, allocated parking, video entry phone system, 100 plus year lease, open plan kitchen/dining/living area, lift in block and NHBC certificate. This property also includes secure gated underground car parking with secure cycle storage with CCTV in operation.

Situated in this modern complex just off the Ware Road, Constables Way offers easy access Hertford Town Centre and A10. Hertford East Train Station is only (0.9m) away which provides a regular fast service to both London's Tottenham Hale & Liverpool Street Train Stations. Hertford Town Centre has a wide range of restaurants, coffee shops and bars. Hartham Common and the River Lea is close by which has a range of facilities available including the local leisure centre, Hartham grounds and woods, tennis courts, and more. Also close by is a superstore and a useful industrial park.



70 Fore Street, Hertford, Hertfordshire, SG14 1BY



70 Fore Street, Hertford, Hertfordshire, SG14 1BY

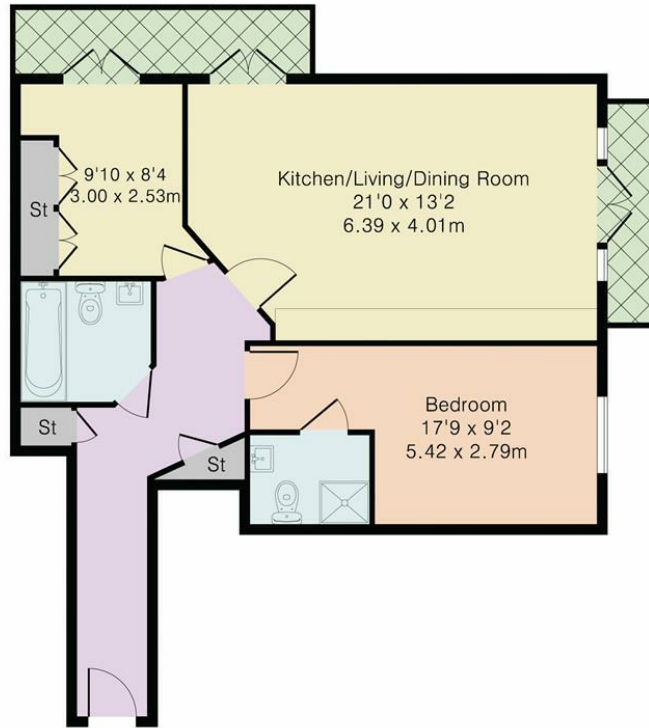


70 Fore Street, Hertford, Hertfordshire, SG14 1BY



70 Fore Street, Hertford, Hertfordshire, SG14 1BY

Approximate Gross Internal Area 678 sq ft – 63 sq m



First Floor



Although Pink Plan Ltd ensures the highest level of accuracy, measurements of doors, windows and rooms are approximate and no responsibility is taken for error, omission or misstatement. These plans are for representation purposes only as defined by RICS code of measuring practise. No guarantee is given on total square footage of the property within this plan. The figure icon is for initial guidance only and should not be relied on as a basis of valuation.



These particulars, whilst believed to be accurate are set out as a general outline only for guidance and do not constitute any part of an offer or contract. Intending purchasers should not rely on them as statements of representation of fact, but must satisfy themselves by inspection or otherwise as to their accuracy. No person in this firms employment has the authority to make or give any representation or warranty in respect of the property.



stevenoates.com