



stevengoates.com



2 Kinsman Mews

Gascoyne Way, Hertford, SG13 8EL

Price Guide £1,000,000



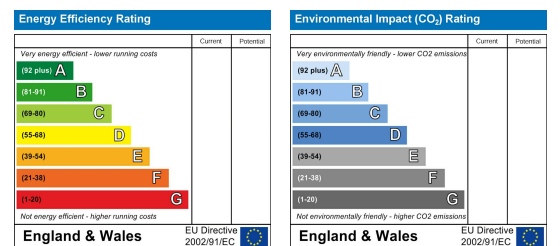
Floor Plan



Area Map



Energy Efficiency Graph



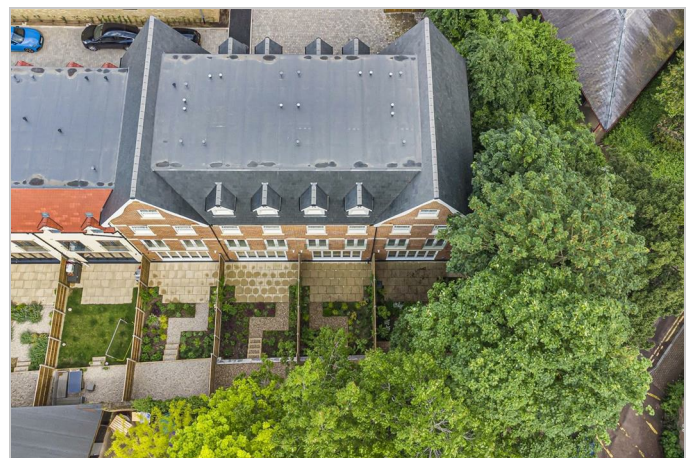
Viewing

Please contact our Hertford Office on 01992303300 if you wish to arrange a viewing appointment for this property or require further information.

- Exquisite Development of just 7 Townhouses
- Exceptionally Spacious Accommodation
- Close to Hertford's historic town centre
- Viewing Available Immediately



SHOW HOME AVAILABLE TO VIEW IMMEDIATELY - A exceptional and exclusive development of just 7 luxurious townhouses on the edge of Hertford's historic town centre. The Elizabeth offers excellent proportioned accommodation over 4 floors spanning 2009 sqft which include a spacious kitchen/diner, downstairs wc and integral garage on the ground floor. On the first floor, there is a large living room, bedroom with en-suite, a laundry room and study/bedroom 5. Over the second and third floors, there is a main bedroom suite with dressing room & en-suite, a further 2 large bedrooms, both with en-suites and a large playroom/bedroom 6. Externally, there are professionally landscaped gardens and allocated parking for 2 cars.



These particulars, whilst believed to be accurate are set out as a general outline only for guidance and do not constitute any part of an offer or contract. Intending purchasers should not rely on them as statements of representation of fact, but must satisfy themselves by inspection or otherwise as to their accuracy. No person in this firm's employment has the authority to make or give any representation or warranty in respect of the property.