



36, Arthur Martin-leake Way, High Cross

SG11 1BQ

Price Guide £850,000



[stevenoates.com](https://www.stevenoates.com)



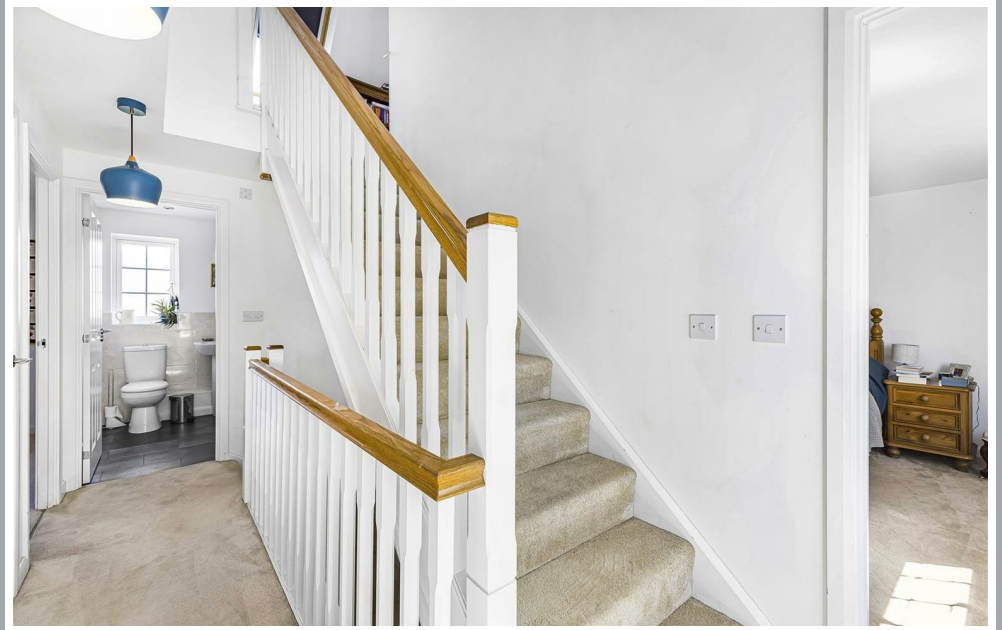
## 36 Arthur Martin-leake Way, High Cross, Hertfordshire, SG11 1BQ

\*\*\*\*CHAIN FREE\*\*\*\* A substantial 5 bedroom detached family home located within an enviable position directly overlooking the green in this popular residential development. The generously proportioned accommodation comprises of a entrance hall with downstairs WC, living room, study, kitchen/breakfast room, utility room on the ground floor. On the first floor, there are 3 good size bedrooms, 2 bathrooms and on the second floor, there are 2 additional double bedrooms and a shower room. Externally, there is driveway parking, a detached double garage with room above and a rear garden. Viewing is highly recommended!

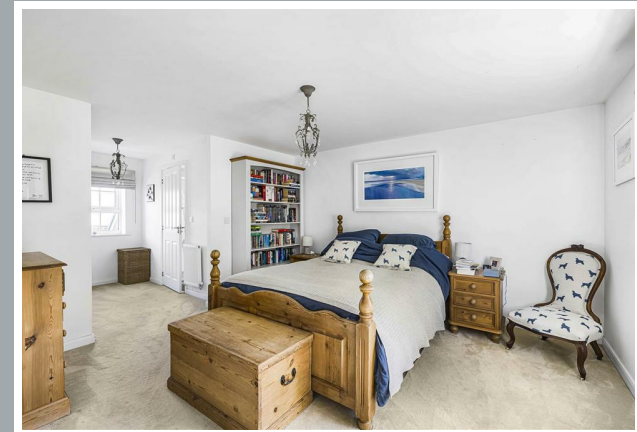
High Cross lies to the northern edge of the county of Hertfordshire, an area renowned for its rural beauty. Surrounded by outstanding countryside, Canterbury Park offers easy access to the A10 and Ware British Rail Station servicing London Liverpool Street as well as some of Hertfordshire's highest regarded schools including Heath Mount and St Edmunds College. High Cross lies to the northern edge of the county of Hertfordshire, an area renowned for its rural beauty. Surrounded by outstanding countryside, Canterbury Park offers easy access to the A10 and Ware British Rail Station servicing London Liverpool Street as well as some of Hertfordshire's highest regarded schools including Heath Mount and St Edmunds College.



70 Fore Street, Hertford, Hertfordshire, SG14 1BY

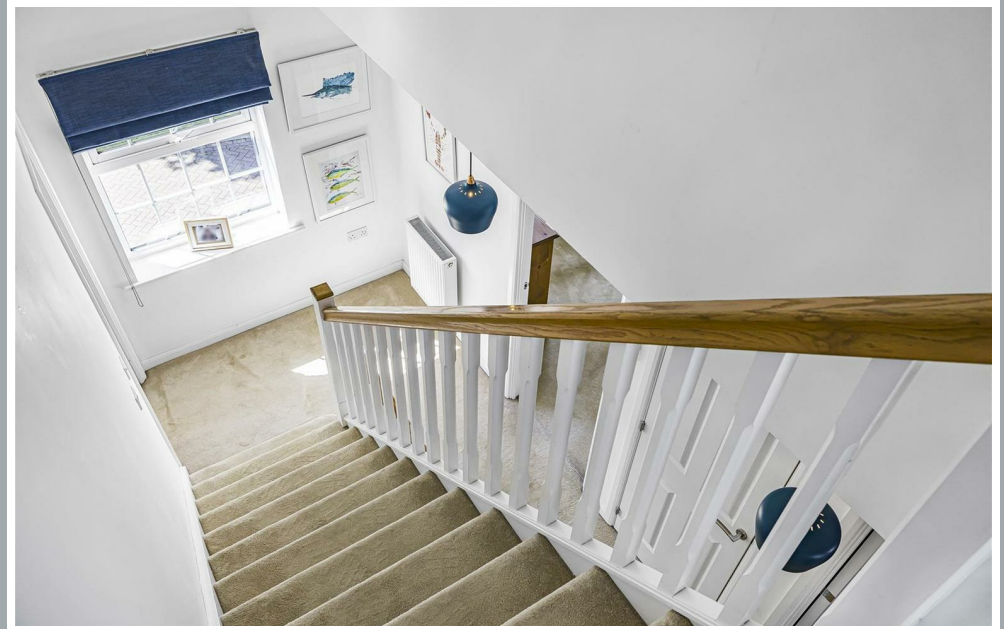


70 Fore Street, Hertford, Hertfordshire, SG14 1BY

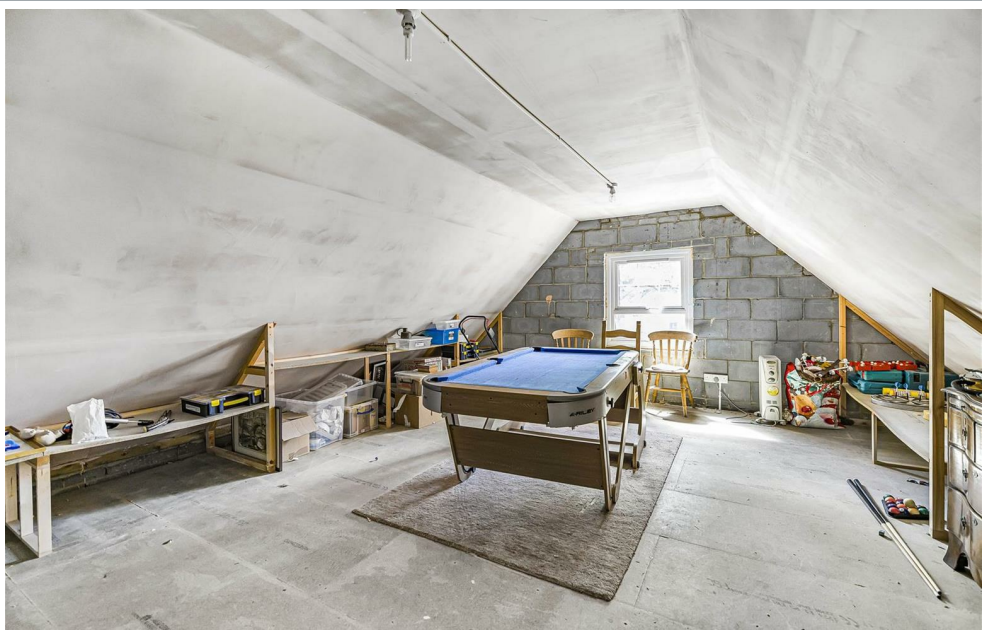


70 Fore Street, Hertford, Hertfordshire, SG14 1BY





70 Fore Street, Hertford, Hertfordshire, SG14 1BY



70 Fore Street, Hertford, Hertfordshire, SG14 1BY



Arthur Martin-Leake Way, SG11

Approximate Area = 255.38 sq m / 2749 sq ft  
 (Including Garage Building)  
 Garage Building = 84.72 sq m / 912 sq ft



Key:  
 CH - Ceiling Height

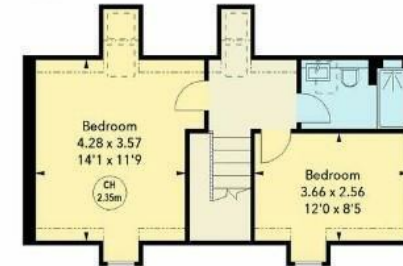
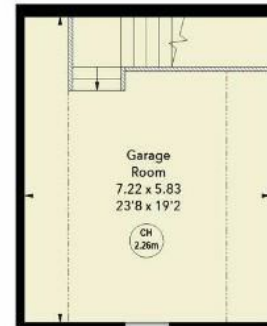


Illustration For Identification Purposes Only.  
 All measurements and areas are approximate, not to scale.  
 © Orange Tree Photography

These particulars, whilst believed to be accurate are set out as a general outline only for guidance and do not constitute any part of an offer or contract. Intending purchasers should not rely on them as statements of representation of fact, but must satisfy themselves by inspection or otherwise as to their accuracy. No person in this firm's employment has the authority to make or give any representation or warranty in respect of the property.



stevenoates.com