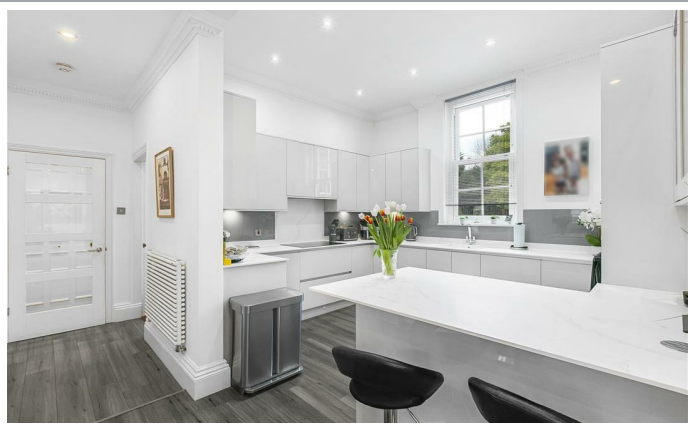




2, Ponsbourne Manor, Hertford
SG13 8QR
Price Guide £875,000



stevenoates.com



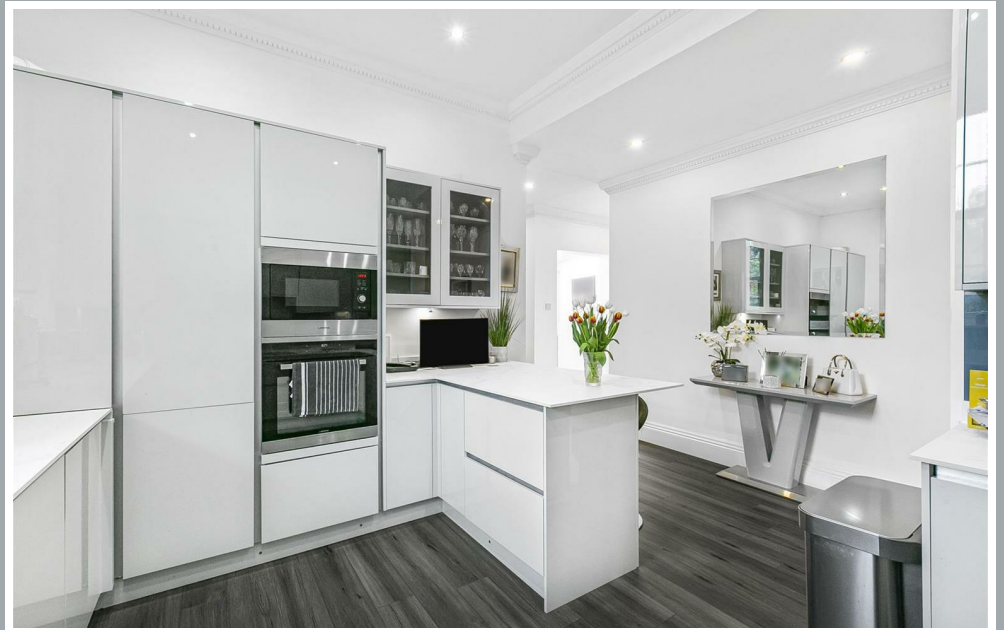
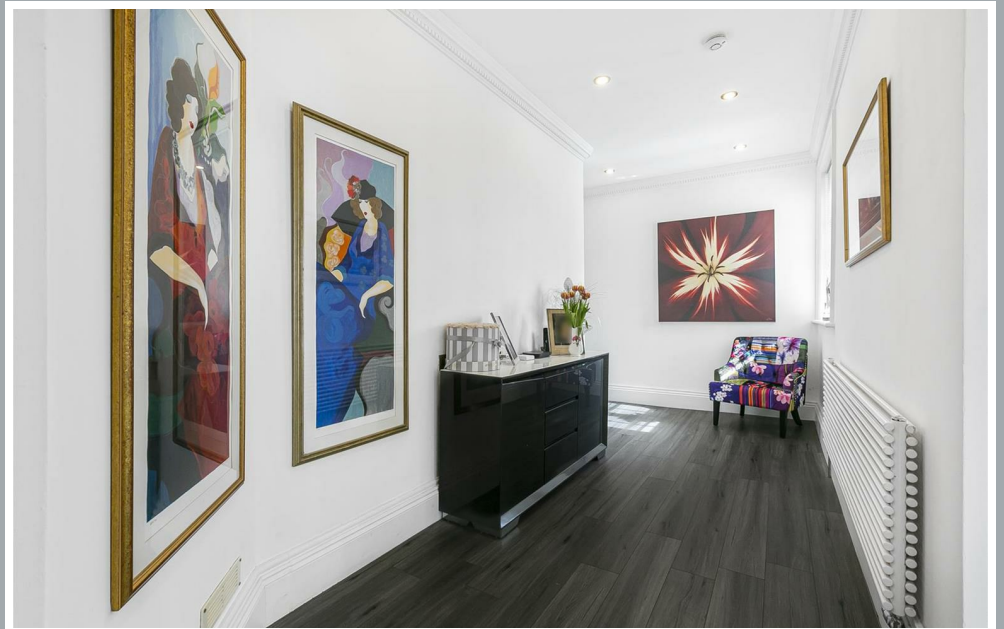
2 Ponsbourne Manor, Newgate Street Village, Hertford, Herts, SG13 8QR

*****SHARE OF FREEHOLD***** An impressive 4 bedroom ground floor apartment with direct access to the beautifully kept gardens benefiting from a share of the freehold. The recently renovated accommodation comprises of an entrance hall, kitchen/breakfast room, large living room, conservatory, 3 bedrooms and 2 bathrooms on the ground floor. On the lower ground floor, there is an additional bedroom, shower room, utility room and home office/gym. Externally, the property is surrounded by beautifully kept and useable gardens, along with a garage and ample parking for residents & guests. Viewing is highly recommended to fully appreciate this beautiful property.

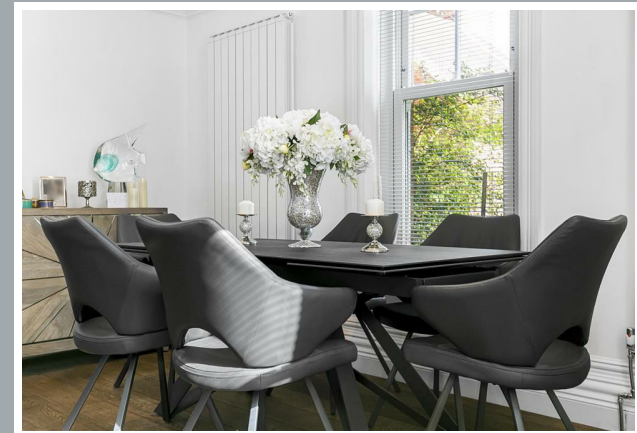
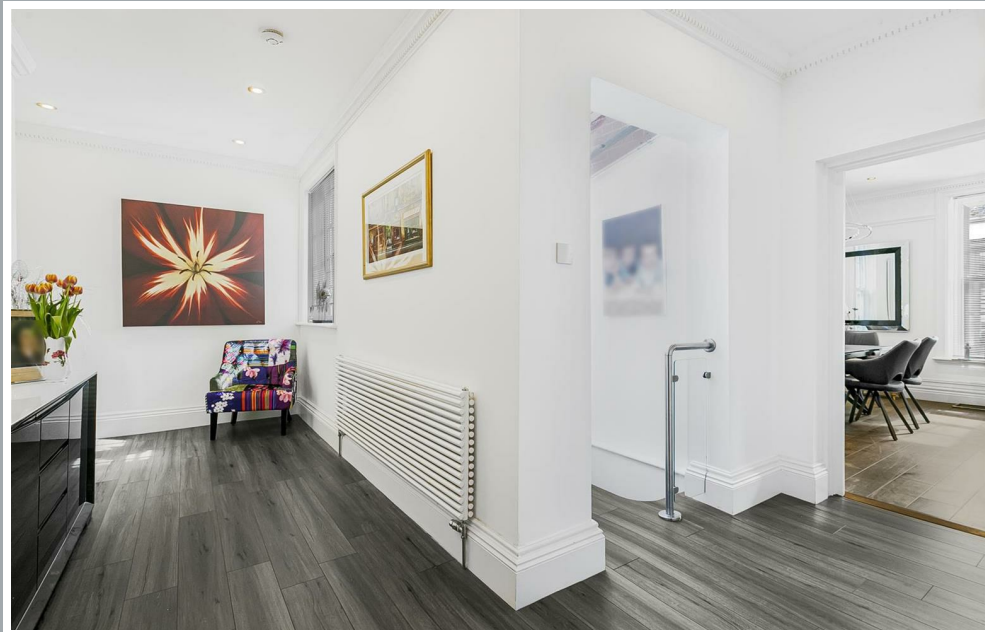
Located towards the end of a long private drive, Ponsbourne Manor is set within a tranquil, tree lined environment, yet is only a short stroll from the village primary school and excellent village pub. The nearby towns of Cuffley, Hertford and Cheshunt are all only a short drive away providing excellent schooling, amenities and mainline train stations serving London.



70 Fore Street, Hertford, Hertfordshire, SG14 1BY



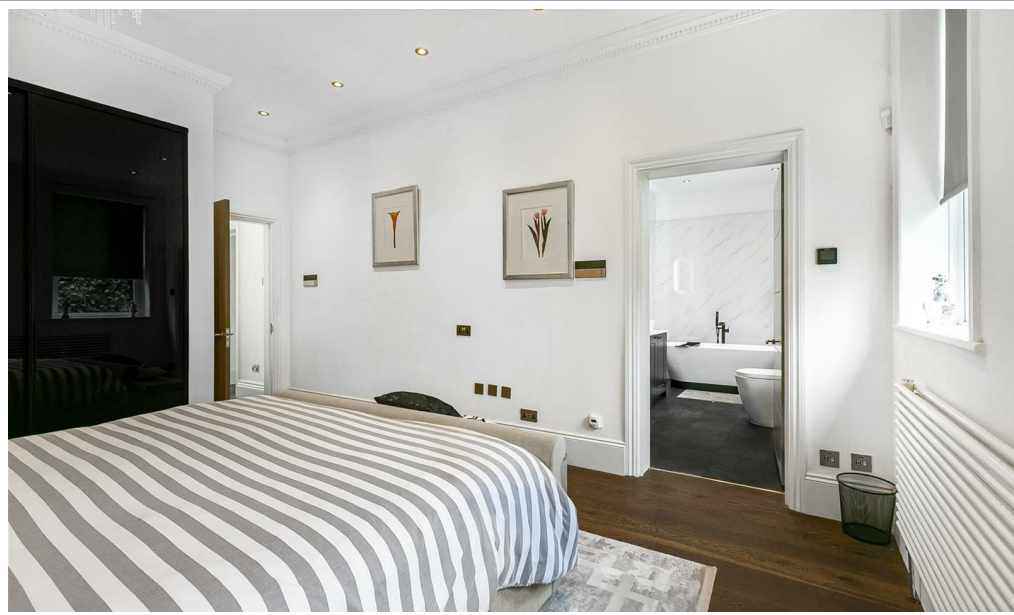
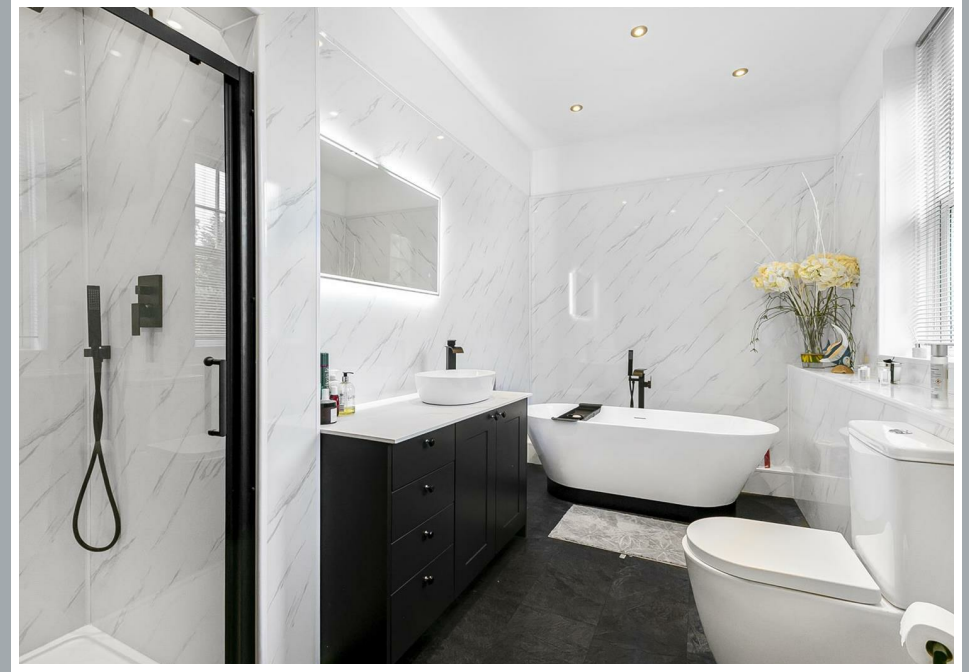
70 Fore Street, Hertford, Hertfordshire, SG14 1BY



70 Fore Street, Hertford, Hertfordshire, SG14 1BY



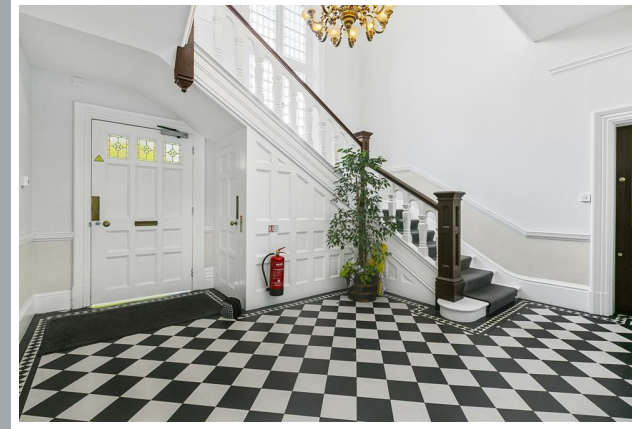
70 Fore Street, Hertford, Hertfordshire, SG14 1BY



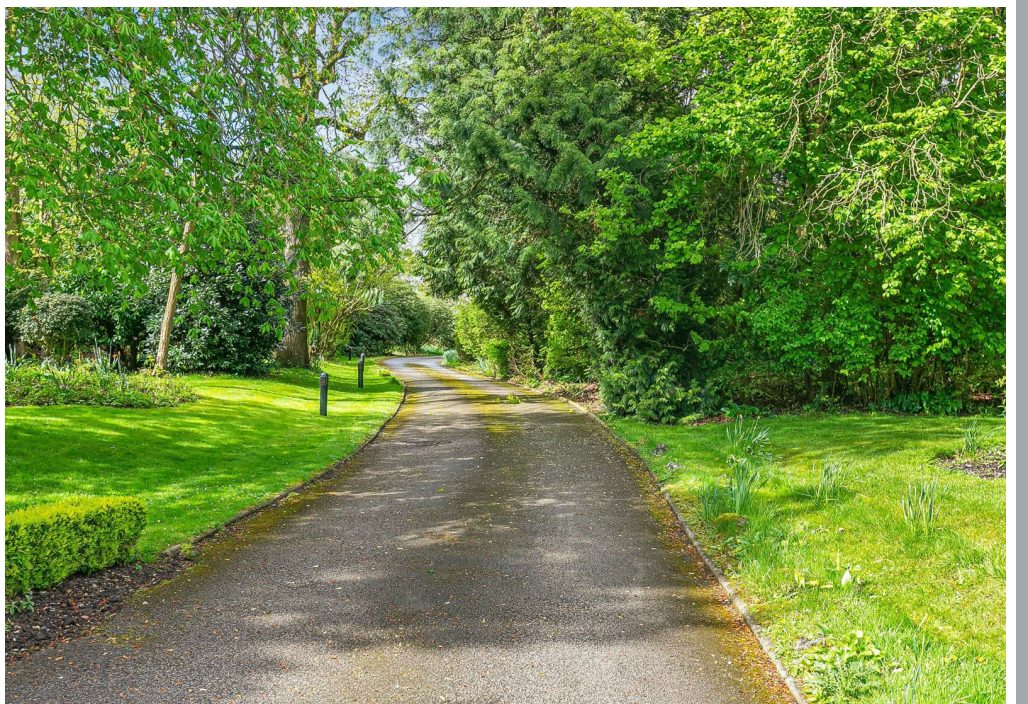
70 Fore Street, Hertford, Hertfordshire, SG14 1BY



70 Fore Street, Hertford, Hertfordshire, SG14 1BY



70 Fore Street, Hertford, Hertfordshire, SG14 1BY



70 Fore Street, Hertford, Hertfordshire, SG14 1BY



70 Fore Street, Hertford, Hertfordshire, SG14 1BY

Approximate Gross Internal Area
2418 sq ft - 225 sq m



These particulars, whilst believed to be accurate are set out as a general outline only for guidance and do not constitute any part of an offer or contract. Intending purchasers should not rely on them as statements of representation of fact, but must satisfy themselves by inspection or otherwise as to their accuracy. No person in this firm's employment has the authority to make or give any representation or warranty in respect of the property.



stevenoates.com