



67, Windmill Way, Much Hadham

SG10 6BQ

Price Guide £550,000



[stevenoates.com](https://www.stevenoates.com)



## 67 Windmill Way, Much Hadham, Hertfordshire, SG10 6BQ

A beautifully appointed and extended 4 bedroom semi-detached family home located within the highly sought after village of Much Hadham. The generous accommodation comprises of an entrance hall, bathroom, living room, large family room, kitchen/diner and a bedroom 4 on the floor. On the first floor, there are 3 bedrooms and an upstairs wc (potential for a shower room). Externally, the front garden is a good size and is enclosed by a mature hedge. The rear garden is also a good size and has been professionally landscaped to include children's play area and an covered outside dining area.

The property is located within a quiet residential road, only a short distance from the village high street and amenities. The high sought after village of Much Hadham offers a thriving community and amenities which include an excellent village primary school, village pub, shop, doctor's surgery and a dentist to name a few. The nearby towns of Ware, Hertford and Bishops Stortford are all within easy reach offering a wider choice of facilities and mainline train stations with fast services to London, along with excellent secondary schooling.



70 Fore Street, Hertford, Hertfordshire, SG14 1BY



70 Fore Street, Hertford, Hertfordshire, SG14 1BY

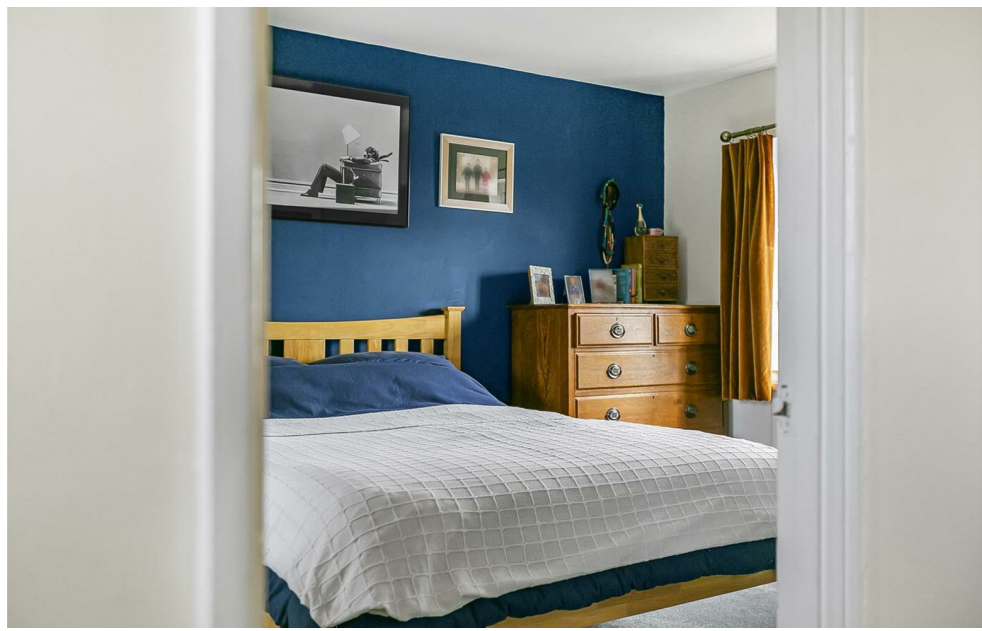


70 Fore Street, Hertford, Hertfordshire, SG14 1BY





70 Fore Street, Hertford, Hertfordshire, SG14 1BY



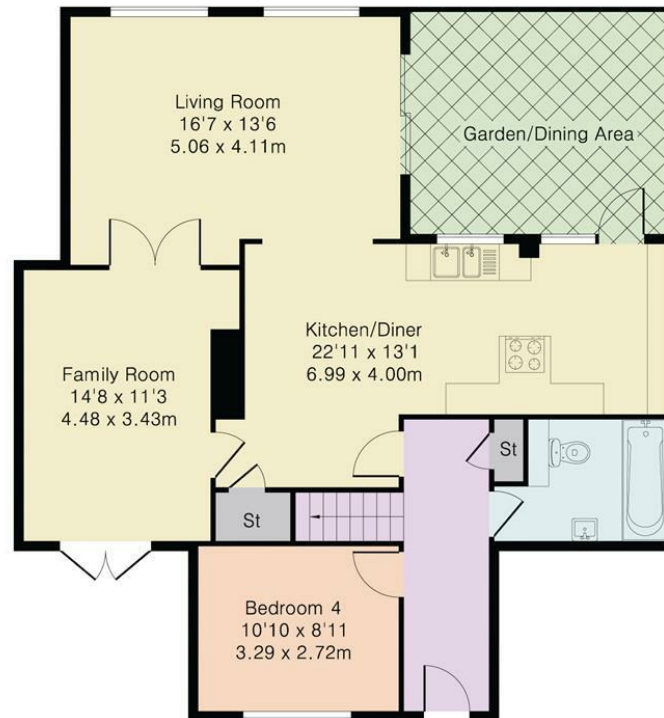
70 Fore Street, Hertford, Hertfordshire, SG14 1BY



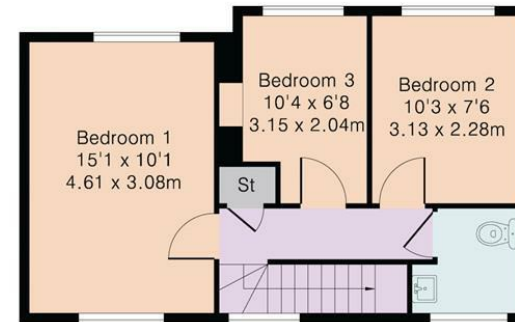


70 Fore Street, Hertford, Hertfordshire, SG14 1BY

Approximate Gross Internal Area 1470 sq ft – 137 sq m  
Ground Floor Area 1063 sq ft – 99 sq m  
First Floor Area 407 sq ft – 38 sq m



Ground Floor



First Floor

These particulars, whilst believed to be accurate are set out as a general outline only for guidance and do not constitute any part of an offer or contract. Intending purchasers should not rely on them as statements of representation of fact, but must satisfy themselves by inspection or otherwise as to their accuracy. No person in this firm's employment has the authority to make or give any representation or warranty in respect of the property.



[stevenoates.com](http://stevenoates.com)