



6, Clyde Terrace, Hertford

SG13 7JP

Price Guide £400,000



stevenoates.com



6 Clyde Terrace, Hertford, SG13 7JP

Steven Oates are pleased to offer this deceptively spacious three-bedroom family home which is positioned in this popular residential street only a short distance from Hertford East Station & Local schools. The ground floor accommodation includes an entrance hallway, generous size living room and kitchen/dining room at the rear of the property which leads out onto the garden. Upstairs comprises of well-balanced space across three great size bedrooms and there is a family bathroom suite. Externally, this property has. Fantastic size rear garden and driveway parking to the front.

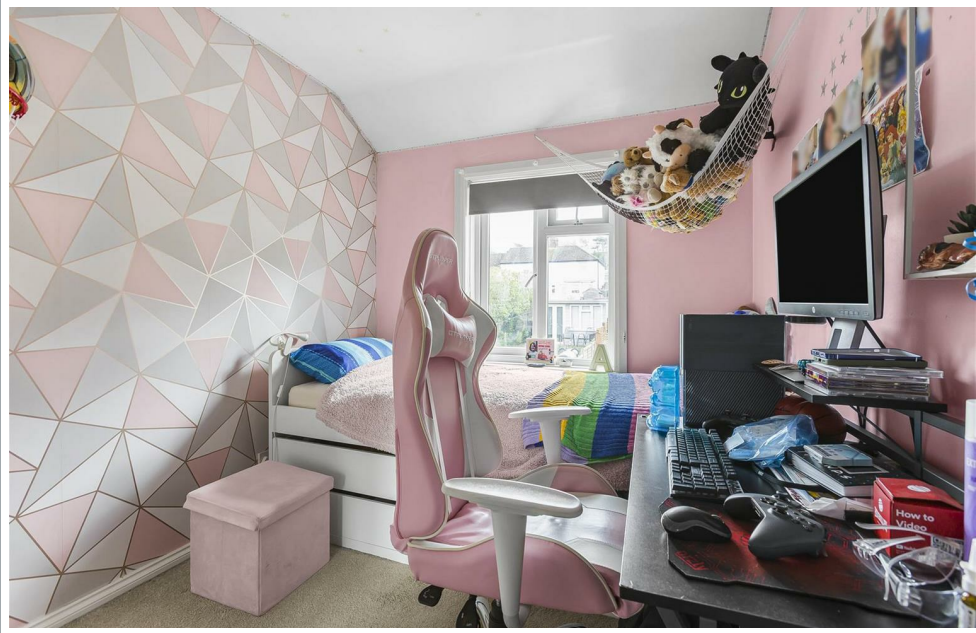
Located within a popular residential location on the eastern side of Hertford, the property is conveniently located for Hertford's favoured SG13 schooling. The town centre, including Hertford East train station is only a mile away providing an excellent choice of restaurants, shops and coffee shops



70 Fore Street, Hertford, Hertfordshire, SG14 1BY

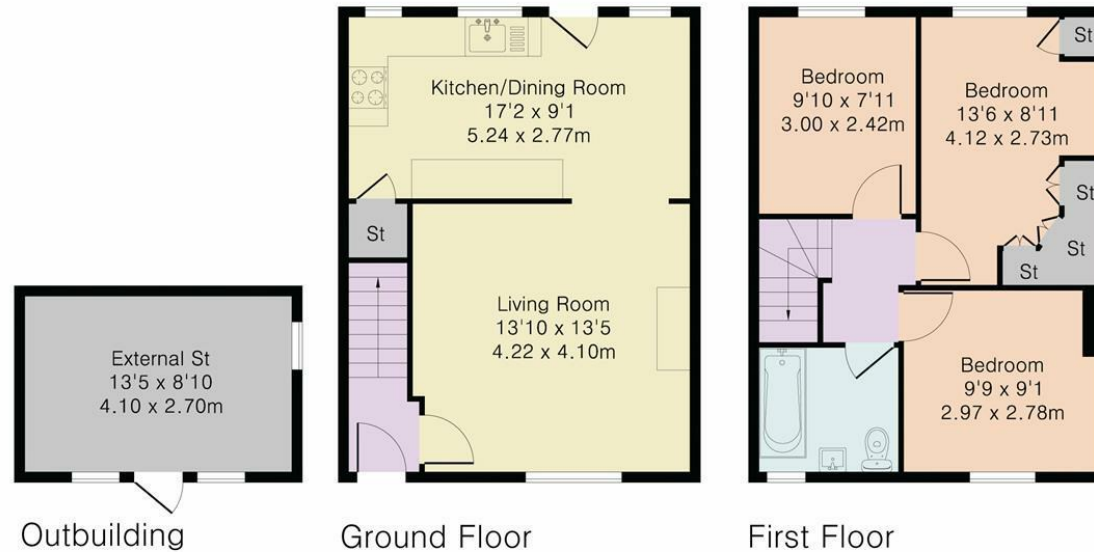


70 Fore Street, Hertford, Hertfordshire, SG14 1BY



70 Fore Street, Hertford, Hertfordshire, SG14 1BY

Approximate Gross Internal Area 905 sq ft – 85 sq m
Ground Floor Area 393 sq ft – 37 sq m
First Floor Area 393 sq ft – 37 sq m
Outbuilding Area 119 sq ft – 11 sq m



Although Pink Plan Ltd ensures the highest level of accuracy, measurements of doors, windows and rooms are approximate and no responsibility is taken for error, omission or misstatement. These plans are for representation purposes only as defined by RICS code of measuring practise. No guarantee is given on total square footage of the property within this plan. The figure icon is for initial guidance only and should not be relied on as a basis of valuation.



These particulars, whilst believed to be accurate are set out as a general outline only for guidance and do not constitute any part of an offer or contract. Intending purchasers should not rely on them as statements of representation of fact, but must satisfy themselves by inspection or otherwise as to their accuracy. No person in this firms employment has the authority to make or give any representation or warranty in respect of the property.



stevenoates.com