



29, Desborough Close, Bengo
SG14 3EG
£799,995



stevenoates.com



29 Desborough Close, Bengeo, Herts, SG14 3EG

A exceptionally well appointed 4 bedroom semi-detached family home located within a highly sought after residential road close to Bengeo Primary School. The property has been extended and offers spacious accommodation with a large entrance hall with fitted coats cupboards, a downstairs wc and doors leading to 2 reception rooms and a recently refitted kitchen/diner. On the first floor, there are 4 good size bedrooms, an en-suite to bedroom 2 and a spacious family bathroom. Externally, the property offers driveway parking, along with an integral garage, which the rear garden is of a good size with beautifully stocked borders and 2 paved patio areas.

Located within the heart of the popular 'Molewood Development' the property is only a short distance from the highly acclaimed Bengeo Primary School. The nearby parade of shops offers localised facilities, whilst Hertford town centre is just over 1 mile away offering a wider variety of shops and restaurants. Hertford North mainline train station is approximately 1.5 miles away providing regular services to London.



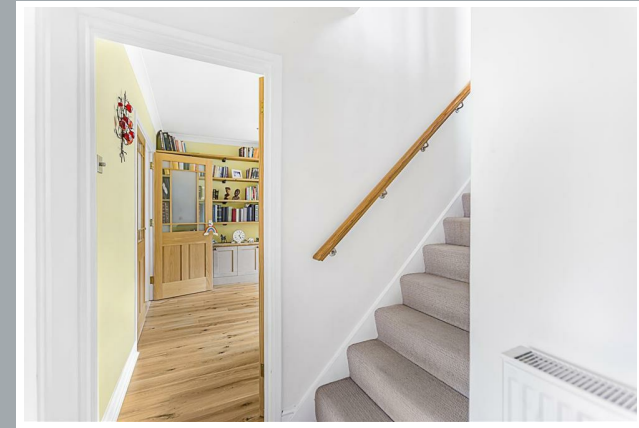
70 Fore Street, Hertford, Hertfordshire, SG14 1BY



70 Fore Street, Hertford, Hertfordshire, SG14 1BY



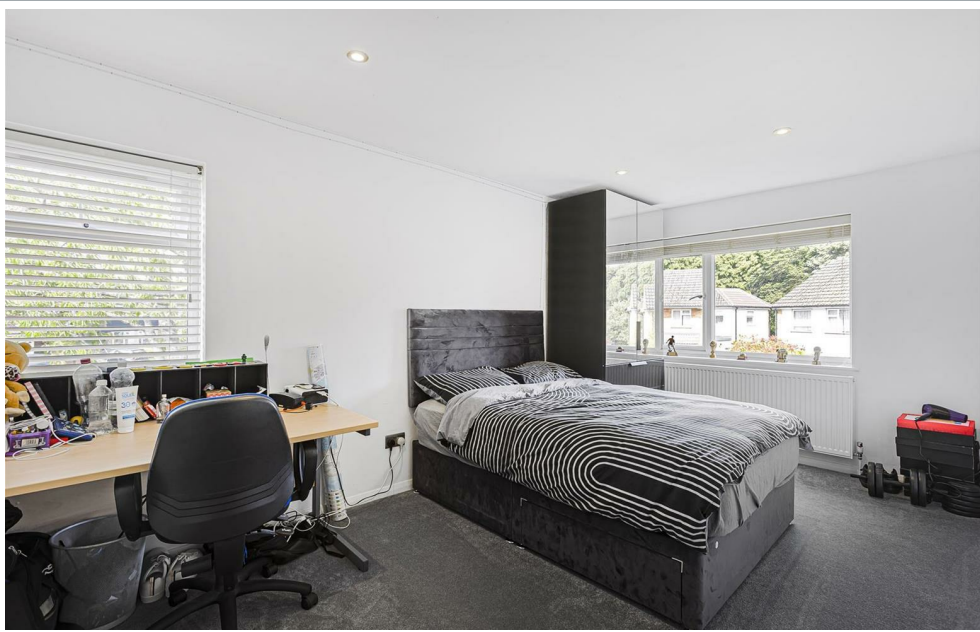
70 Fore Street, Hertford, Hertfordshire, SG14 1BY



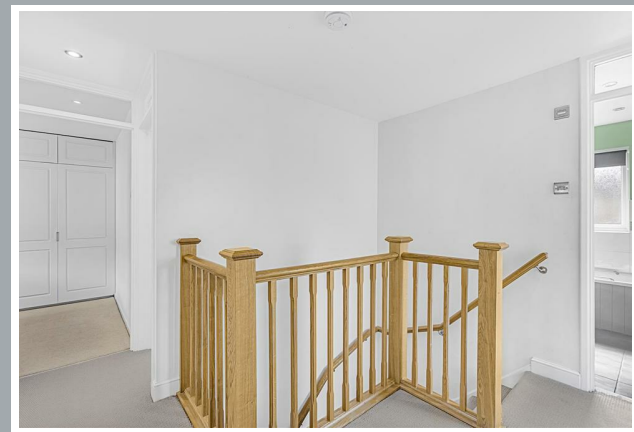
70 Fore Street, Hertford, Hertfordshire, SG14 1BY



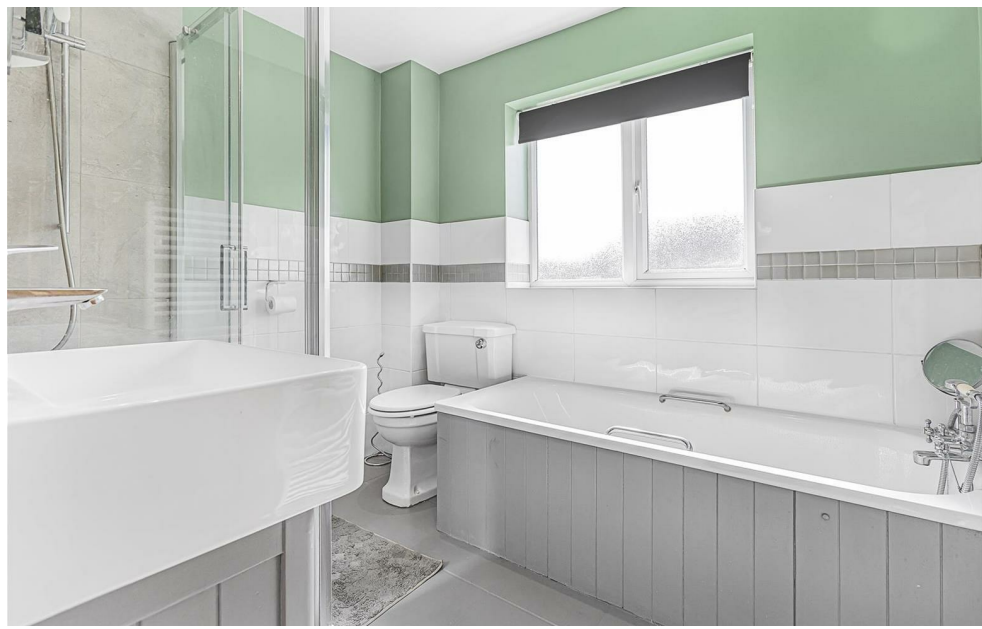
70 Fore Street, Hertford, Hertfordshire, SG14 1BY



70 Fore Street, Hertford, Hertfordshire, SG14 1BY



70 Fore Street, Hertford, Hertfordshire, SG14 1BY



70 Fore Street, Hertford, Hertfordshire, SG14 1BY

Approximate Gross Internal Area 1595 sq ft – 148 sq m
Ground Floor Area 829 sq ft – 77 sq m
First Floor Area 766 sq ft – 71 sq m



Although Pink Plan Ltd ensures the highest level of accuracy, measurements of doors, windows and rooms are approximate and no responsibility is taken for error, omission or misstatement. These plans are for representation purposes only as defined by RICS code of measuring practise. No guarantee is given on total square footage of the property within this plan. The figure icon is for initial guidance only and should not be relied on as a basis of valuation.



These particulars, whilst believed to be accurate are set out as a general outline only for guidance and do not constitute any part of an offer or contract. Intending purchasers should not rely on them as statements of representation of fact, but must satisfy themselves by inspection or otherwise as to their accuracy. No person in this firms employment has the authority to make or give any representation or warranty in respect of the property.



stevenoates.com