



17, Thompson Way, Hertford
SG13 8BQ
£775,000



stevenoates.com



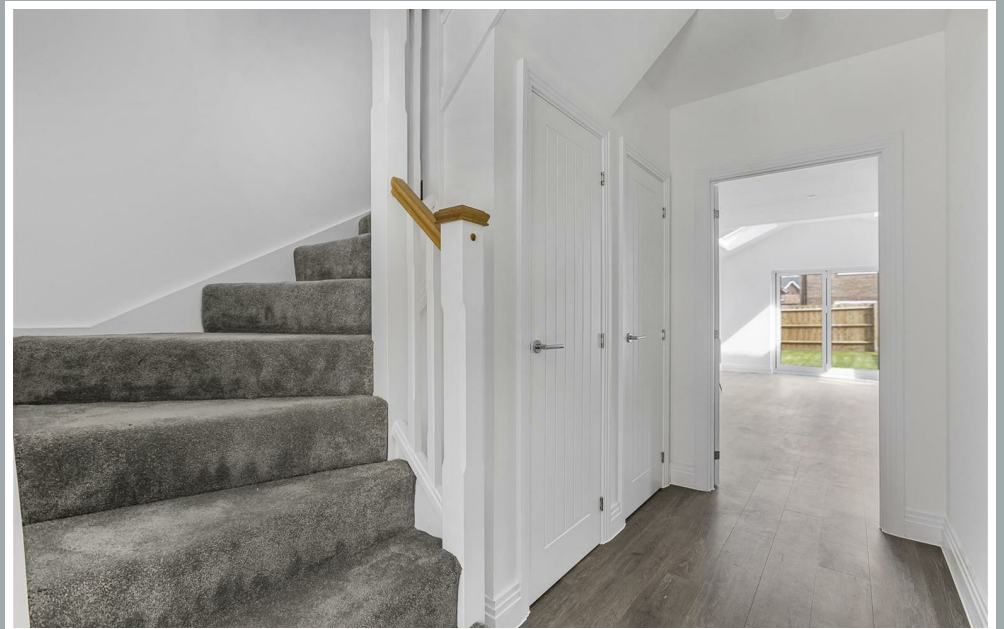
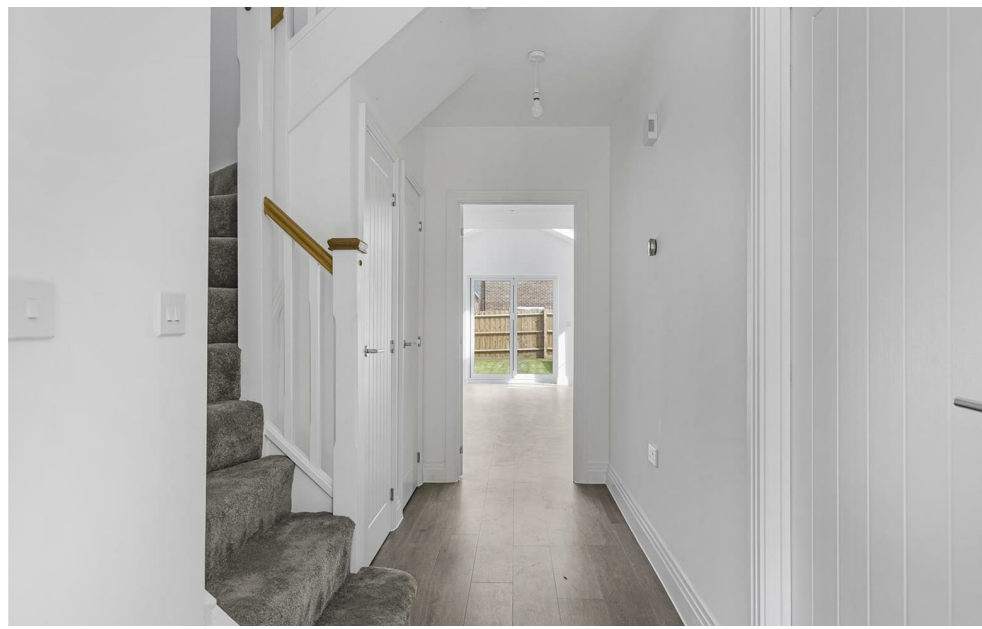
17 Thompson Way, Hertford, SG13 8BQ

****LAST PLOT REMAINING WITH STAMP DUTY CONTRIBUTION**** The Jayfield - 3 bedroom detached home with study and garage - As soon as you enter The Jayfield, you'll feel right at home. Take a look at the open plan kitchen/dining/family room. Imagine trying out new recipes or enjoying family mealtimes together. Bring the outside in with French doors leading out to the garden. Follow the hallway and notice the WC and handy storage spaces as you pass. The large sitting room is filled with light thanks to double aspect windows. Take the stairs to the upper floor to find three bedrooms. Bedroom one has everything you could wish for with an elegant en suite and fitted wardrobe. The further two bedrooms benefit from a luxurious family bathroom. The upstairs is complete with a study/4th bedroom, which could be the ideal working from home solution. Complete with Amtico Spacia flooring and carpets throughout and turf to rear garden

The Limsi Grove development is located on the highly sought after south side of Hertford offering convenient access to Hertford's favoured SG13 schooling including Simon Balle, Richard Hale and Abel Smith. Hertford town centre is also only 0.5 miles away and provides an excellent choice of shops, restaurants and coffee shops. Both Hertford North & East train stations are closeby providing a choice of fast services to London.



70 Fore Street, Hertford, Hertfordshire, SG14 1BY



70 Fore Street, Hertford, Hertfordshire, SG14 1BY



70 Fore Street, Hertford, Hertfordshire, SG14 1BY





70 Fore Street, Hertford, Hertfordshire, SG14 1BY

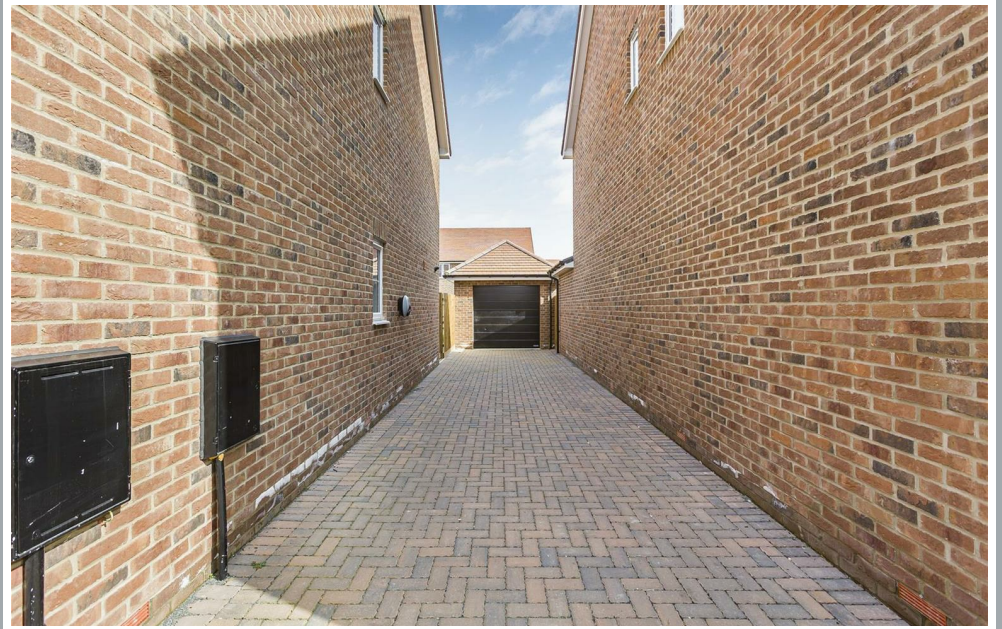


70 Fore Street, Hertford, Hertfordshire, SG14 1BY

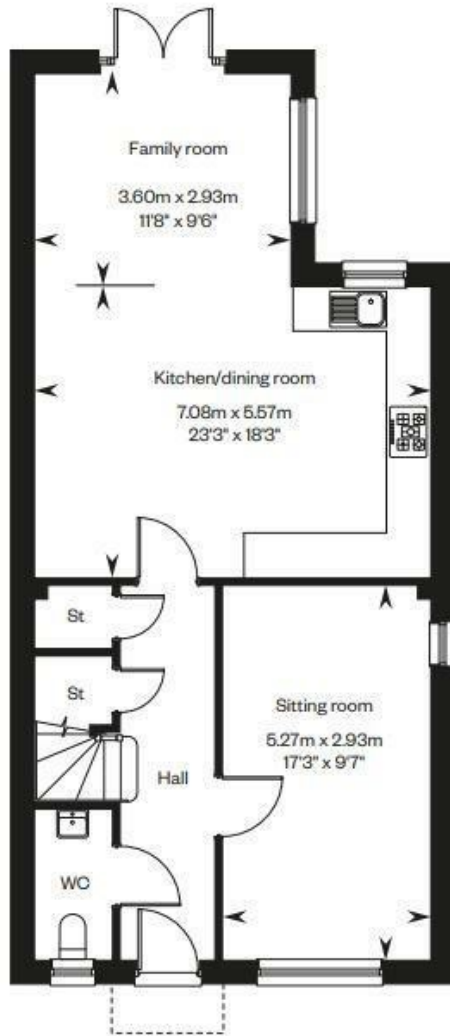


70 Fore Street, Hertford, Hertfordshire, SG14 1BY

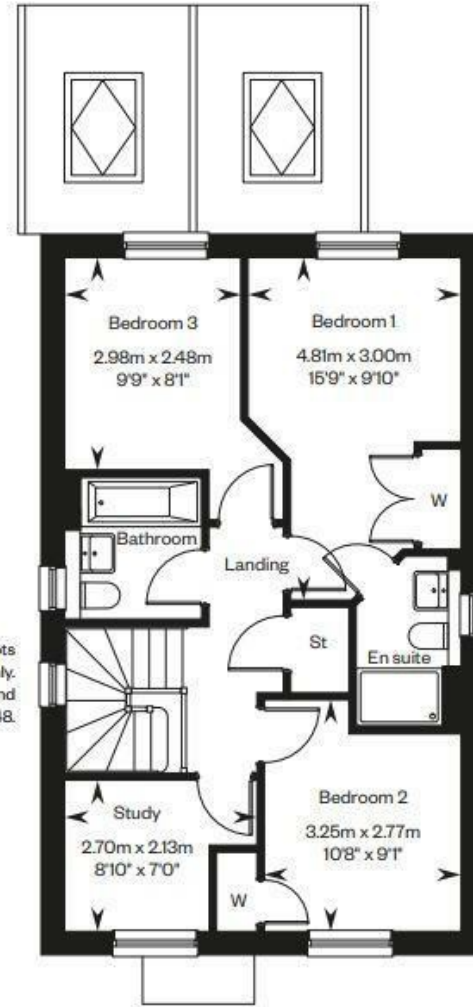




70 Fore Street, Hertford, Hertfordshire, SG14 1BY



Ground floor



First floor

Window applicable to plots 29, 42, 48, 49 & 50 only.
Window is obscured and fixed shut to plots 42 & 48.

These particulars, whilst believed to be accurate are set out as a general outline only for guidance and do not constitute any part of an offer or contract. Intending purchasers should not rely on them as statements of representation of fact, but must satisfy themselves by inspection or otherwise as to their accuracy. No person in this firm's employment has the authority to make or give any representation or warranty in respect of the property.



stevengoates.com