



17, Copperwood, Hertford  
SG13 7HZ  
Price Guide £310,000



[stevenoates.com](http://stevenoates.com)



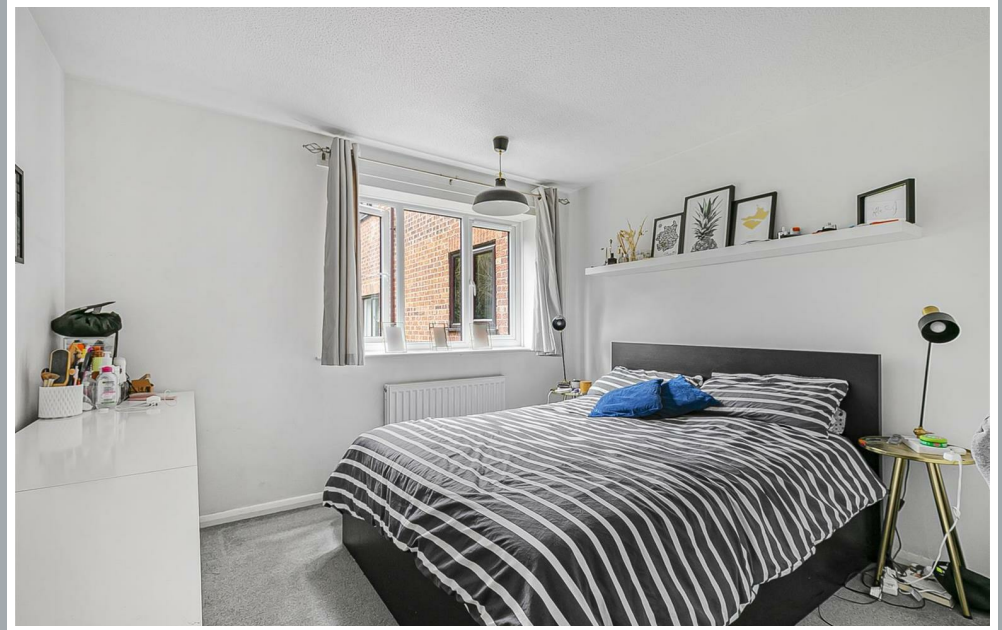
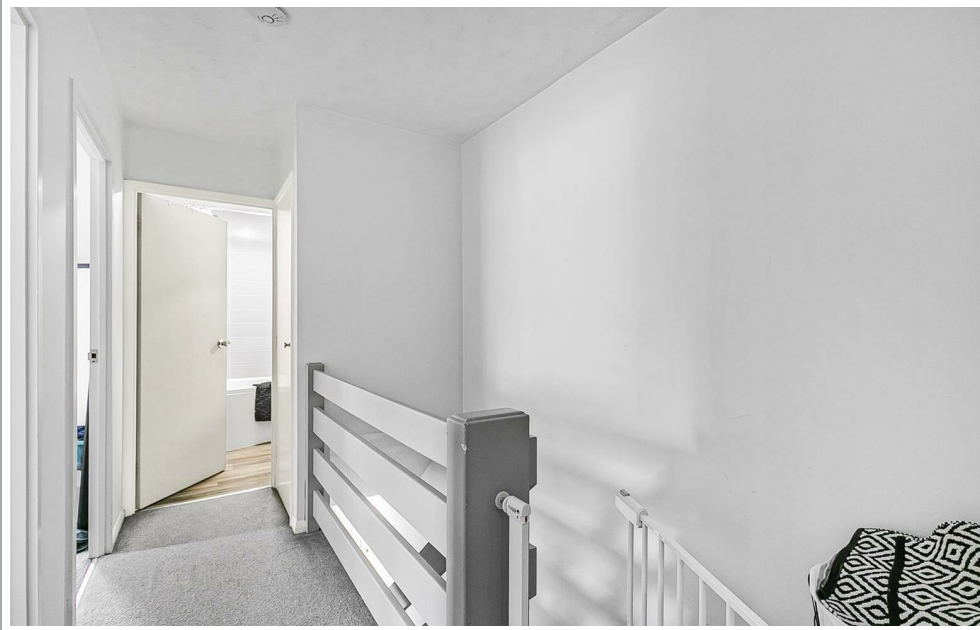
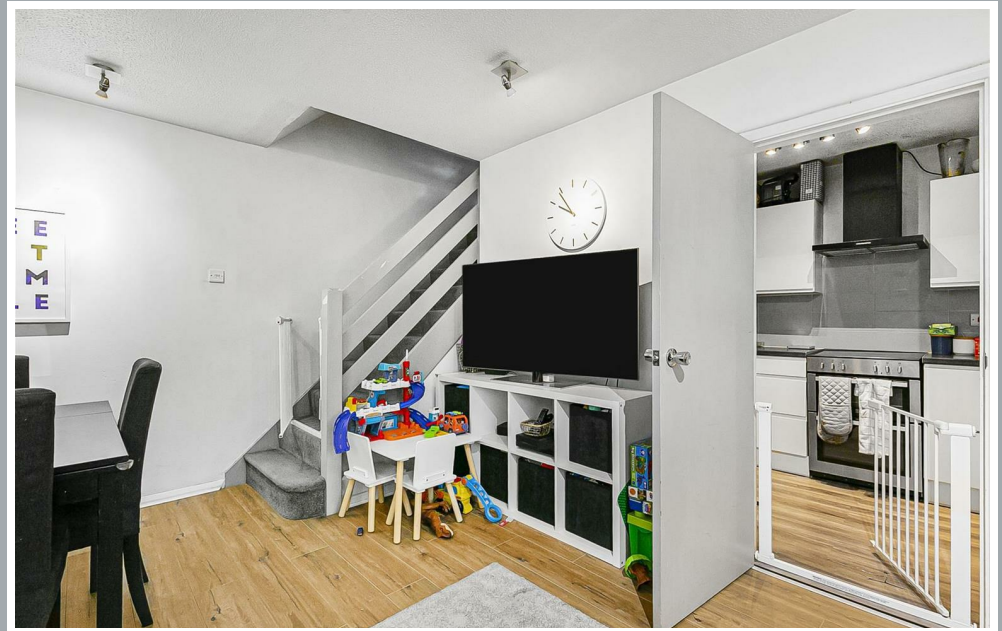
## 17 Copperwood, Hertford, SG13 7HZ

**\*\* CHAIN FREE \*\*** Steven Oates are delighted to offer for sale this rarely available THREE bedroom Split level ground floor maisonette situated conveniently for Hertford Town Centres multiple facilities and rail stations providing links into Central London. Benefits include; Entrance porch, Living room, modern FITTED KITCHEN , stair to first floor, modern FIRST FLOOR BATHROOM suite, three good size bedrooms, COMMUNAL PARKING and GARDENS. Internal viewing highly recommended.

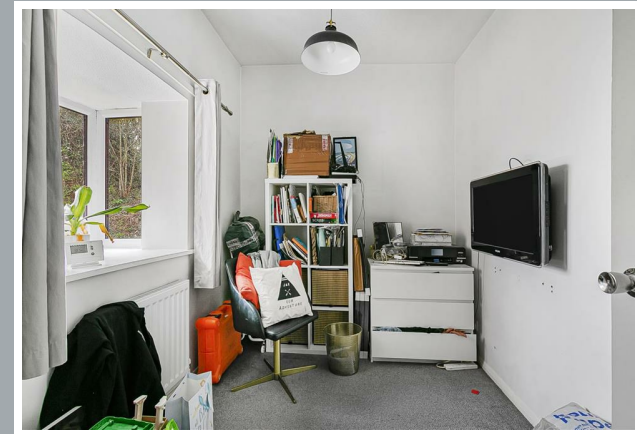
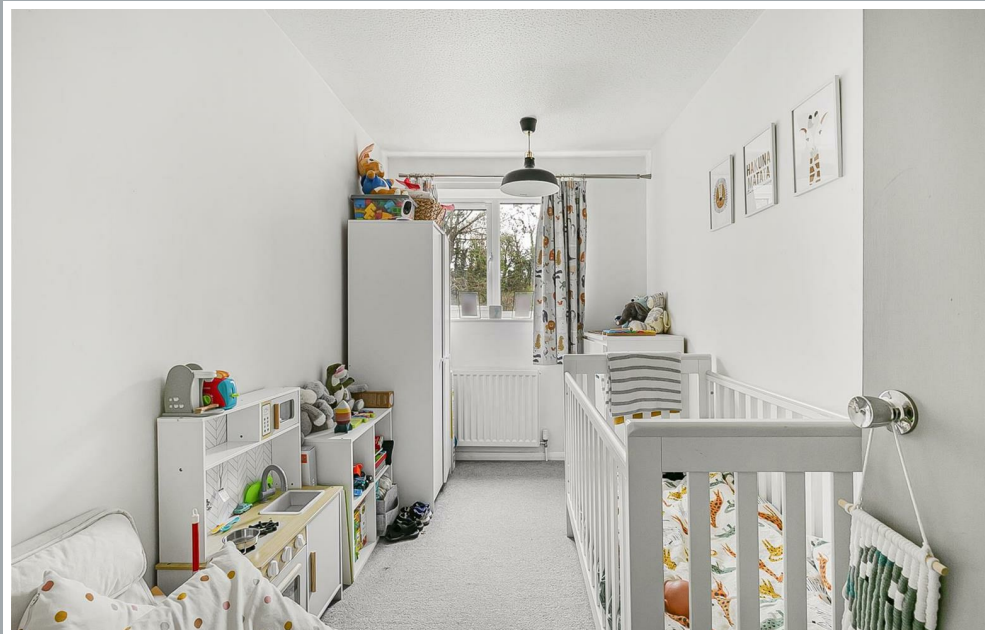
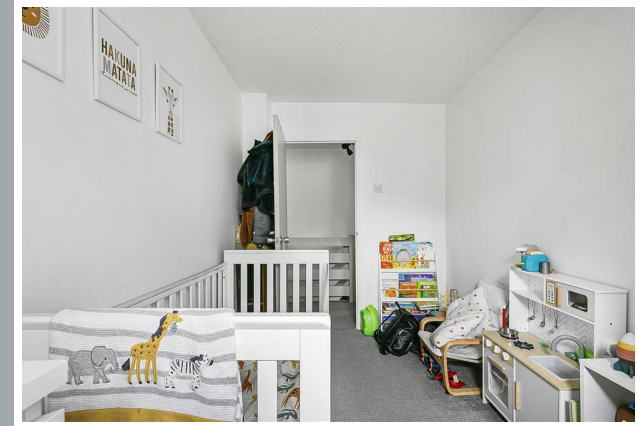
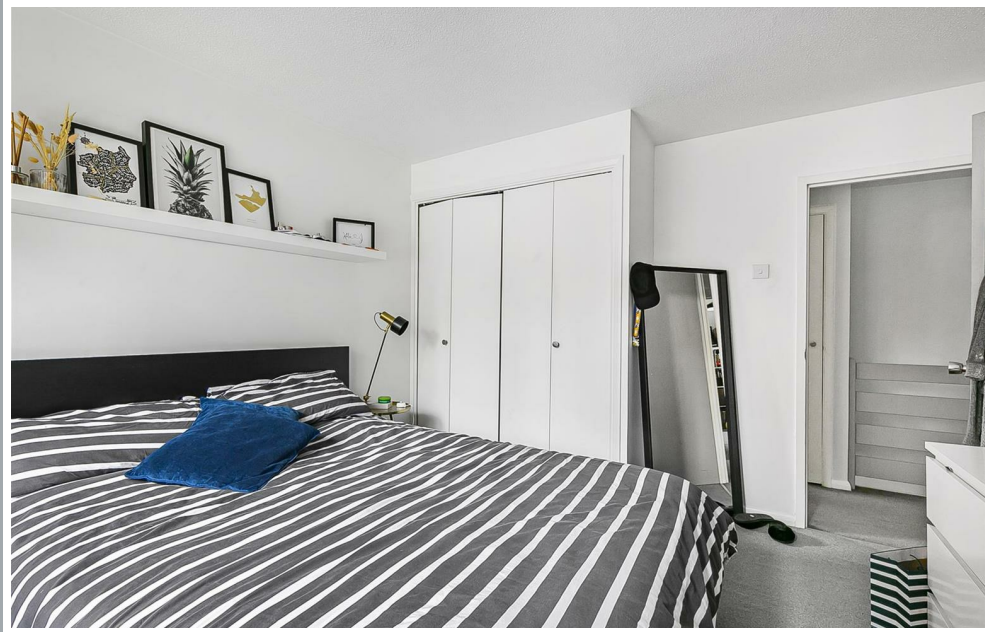
The property is located on the eastern outskirts of Hertford town centre only a short distance from all of the town's amenities and Hertford East station which serves London's Liverpool Street.



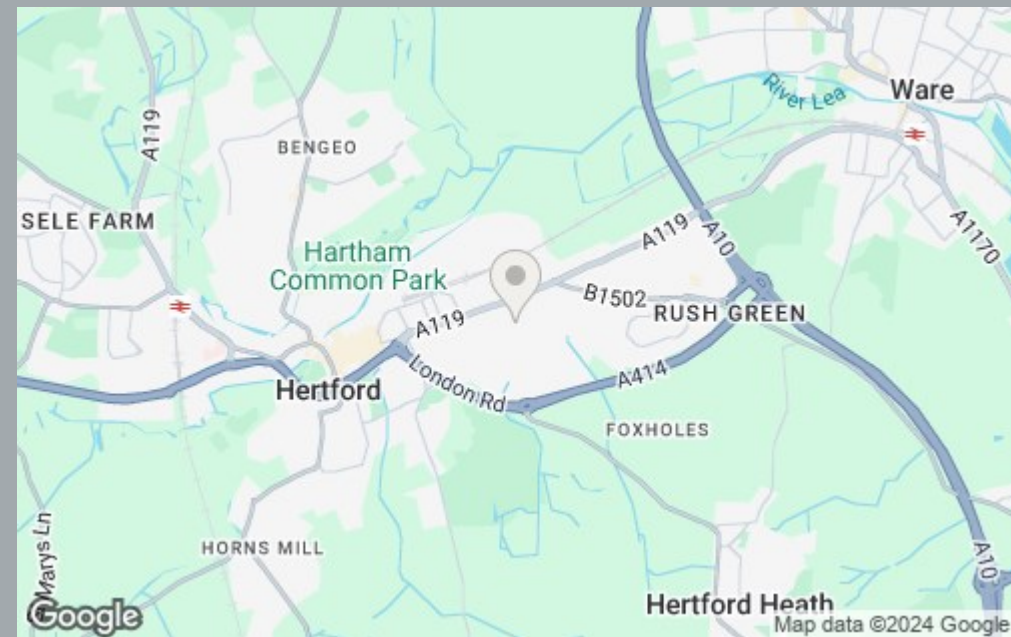
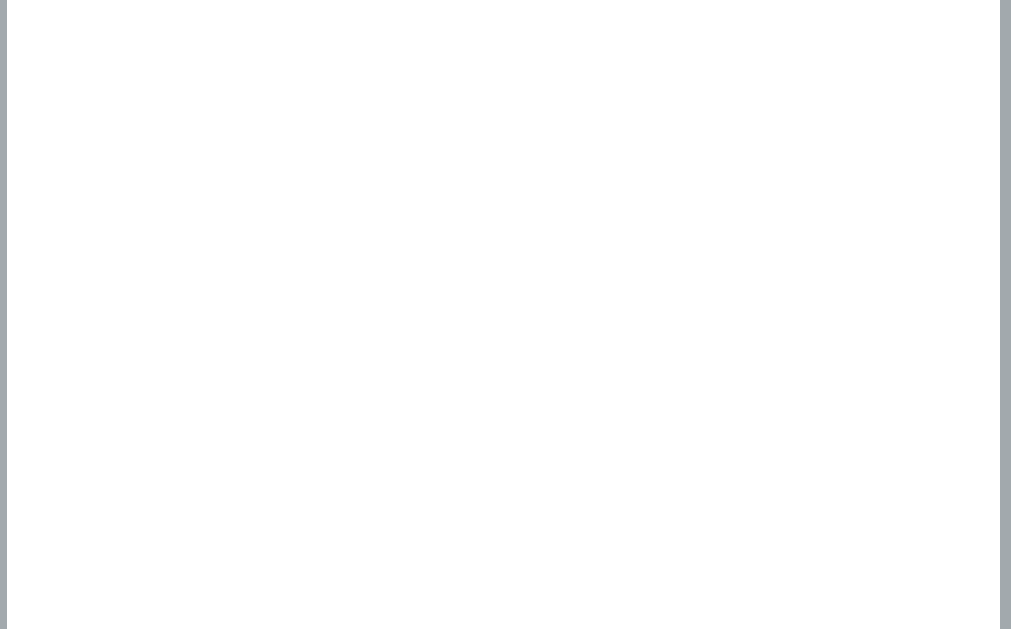
70 Fore Street, Hertford, Hertfordshire, SG14 1BY



70 Fore Street, Hertford, Hertfordshire, SG14 1BY

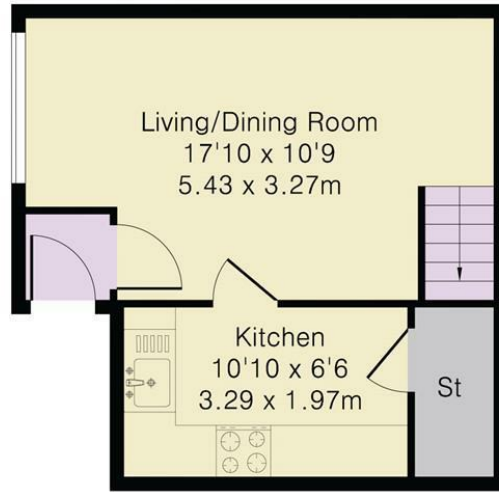


70 Fore Street, Hertford, Hertfordshire, SG14 1BY

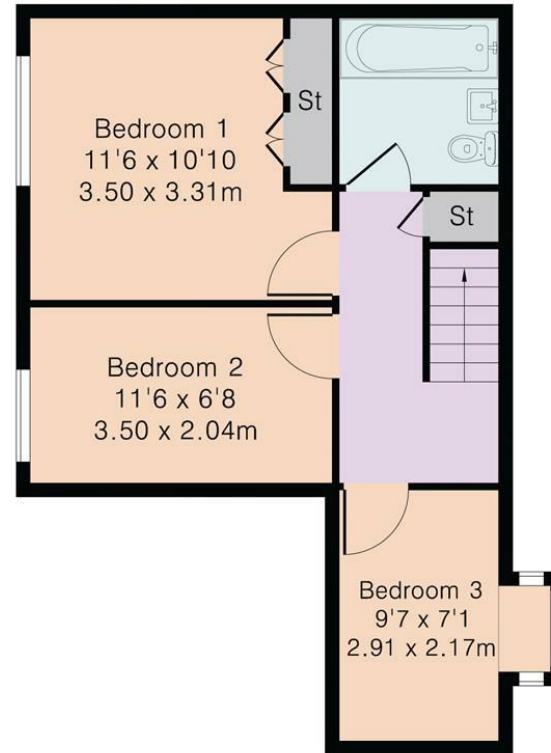


70 Fore Street, Hertford, Hertfordshire, SG14 1BY

Approximate Gross Internal Area 667 sq ft – 62 sq m  
Ground Floor Area 286 sq ft – 27 sq m  
First Floor Area 381 sq ft – 35 sq m



Ground Floor



First Floor

These particulars, whilst believed to be accurate are set out as a general outline only for guidance and do not constitute any part of an offer or contract. Intending purchasers should not rely on them as statements of representation of fact, but must satisfy themselves by inspection or otherwise as to their accuracy. No person in this firm's employment has the authority to make or give any representation or warranty in respect of the property.



[stevenoates.com](http://stevenoates.com)