



52, Great Innings North, Watton At Stone

SG14 3TD

Price Guide £465,000



stevenoates.com



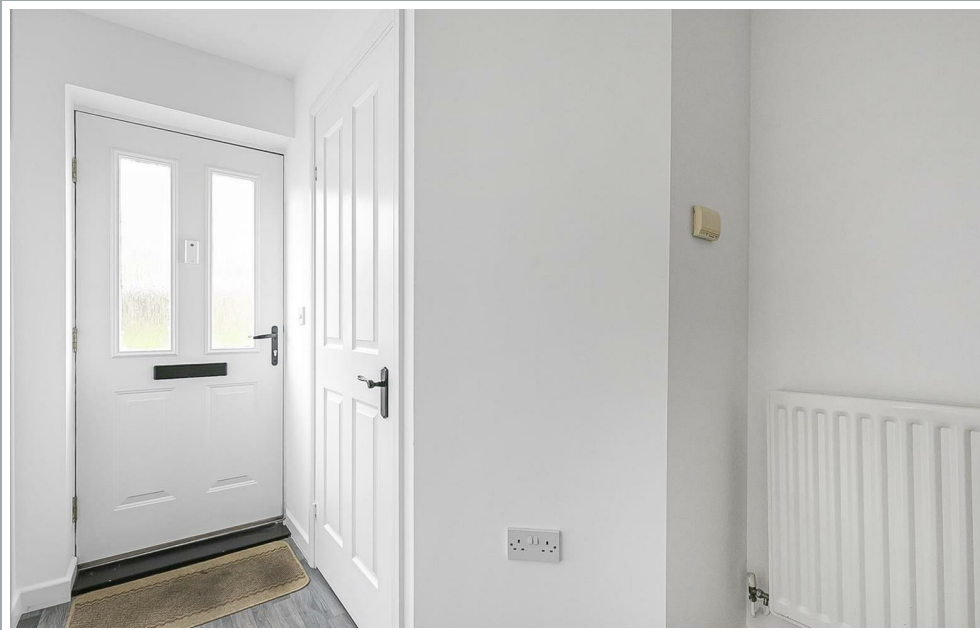
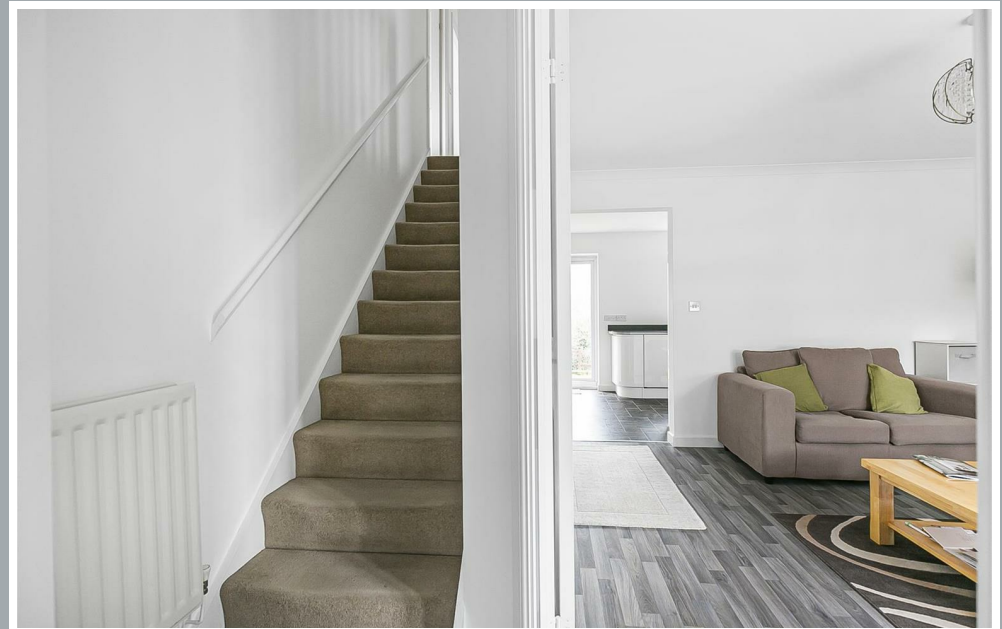
52 Great Innings North, Watton At Stone, Herts, SG14 3TD

Steven Oates are delighted to present this spacious three double bedroom semi detached house situated in the sought after village of Watton at Stone. Arranged over two floors and benefiting spectacular views over fields to the rear. The property is arranged over two floors and comprises of an entrance hallway, ground floor cloakroom, lounge and modern kitchen/diner leading onto the garden. On the first floor, there are three double bedrooms, en-suite to the master bedroom and family bathroom. Externally, there is off street parking, garage and private rear garden.

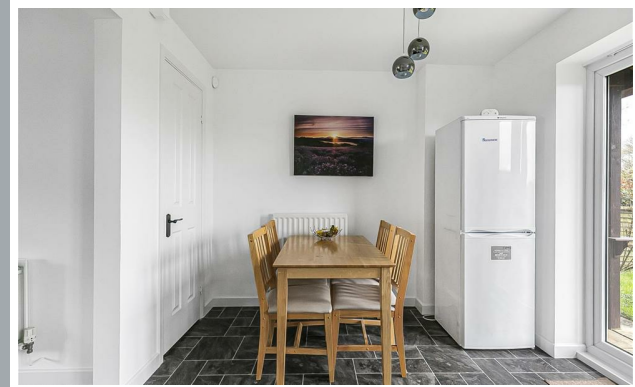
Located within the heart of this vibrant village, Watton At Stone offers excellent amenities including a mainline station which serves London's Moorgate within approximately 50 minutes. Ideally placed for schooling needs with Watton-At-Stone primary school being only minutes away from the house, along with local shop, amenities, and local pubs within close proximity.



70 Fore Street, Hertford, Hertfordshire, SG14 1BY



70 Fore Street, Hertford, Hertfordshire, SG14 1BY



70 Fore Street, Hertford, Hertfordshire, SG14 1BY



70 Fore Street, Hertford, Hertfordshire, SG14 1BY



70 Fore Street, Hertford, Hertfordshire, SG14 1BY

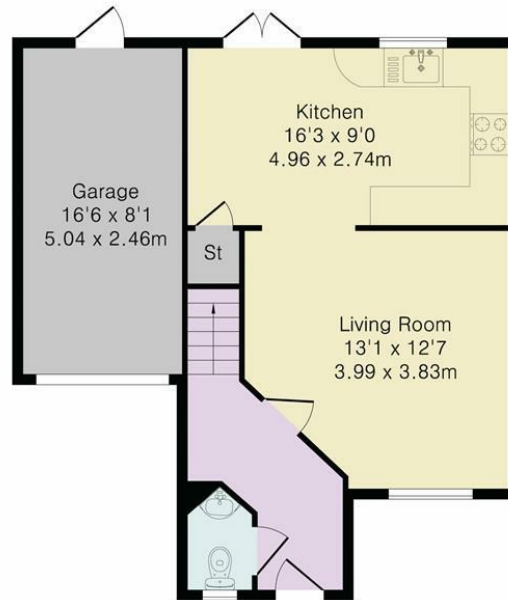


70 Fore Street, Hertford, Hertfordshire, SG14 1BY

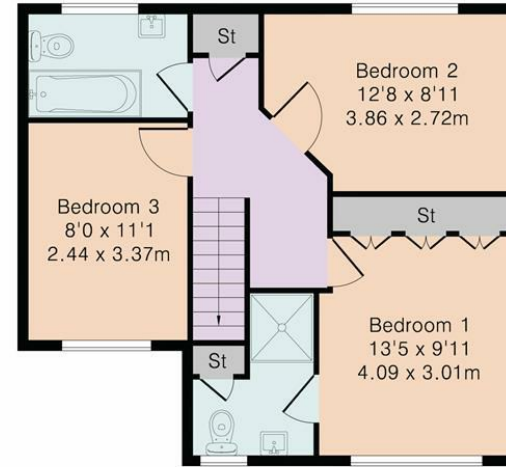


70 Fore Street, Hertford, Hertfordshire, SG14 1BY

Approximate Gross Internal Area 1044 sq ft – 97 sq m
Ground Floor Area 542 sq ft – 50 sq m
First Floor Area 502 sq ft – 47 sq m



Ground Floor



First Floor



Although Pink Plan Ltd ensures the highest level of accuracy, measurements of doors, windows and rooms are approximate and no responsibility is taken for error, omission or misstatement. These plans are for representation purposes only as defined by RICS code of measuring practise. No guarantee is given on total square footage of the property within this plan. The figure icon is for initial guidance only and should not be relied on as a basis of valuation.



These particulars, whilst believed to be accurate are set out as a general outline only for guidance and do not constitute any part of an offer or contract. Intending purchasers should not rely on them as statements of representation of fact, but must satisfy themselves by inspection or otherwise as to their accuracy. No person in this firms employment has the authority to make or give any representation or warranty in respect of the property.



stevenoates.com