

9, George Street, Hertford

SG14 3AD

Guide Price £600,000



stevenoates.com



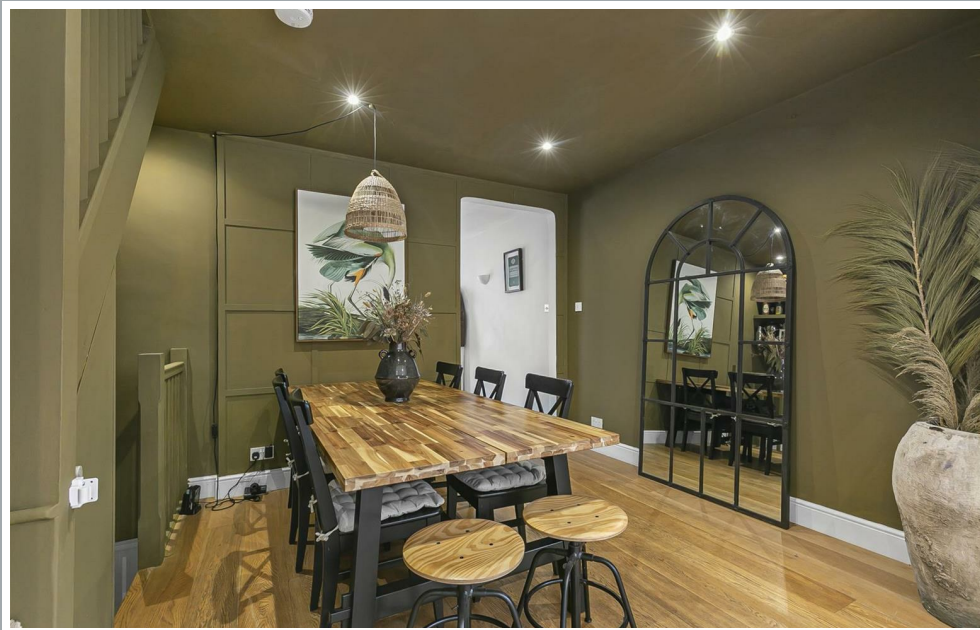
9 George Street, Hertford, Hertfordshire, SG14 3AD

Steven Oates are delighted to offer this beautiful, spacious and well appointed 3 bedroom Victorian cottage situated in a quiet cul-de-sac only a short walk away from Hertford Town Centres multiple facilities. On the ground floor, there is a lounge and dining room leading to an open plan kitchen/breakfast room. The kitchen/breakfast room forms part of an extension and has bi-fold doors leading to the rear garden. On the first floor, there are three spacious bedrooms and modern bathroom. Externally, there is on street parking and the rear garden has been landscaped. There is an outbuilding which has power and lighting and would be perfect as an office but also summer room as it has bi-fold doors.

This character home is ideally situated within this quiet location, nestled amongst the lower slopes of Bengo only 0.7 Miles from Hertford North mainline station which serves London's Moorgate & Kings Cross, whilst Hertford town centre is only a short distance away.



70 Fore Street, Hertford, Hertfordshire, SG14 1BY



70 Fore Street, Hertford, Hertfordshire, SG14 1BY



70 Fore Street, Hertford, Hertfordshire, SG14 1BY





70 Fore Street, Hertford, Hertfordshire, SG14 1BY



70 Fore Street, Hertford, Hertfordshire, SG14 1BY

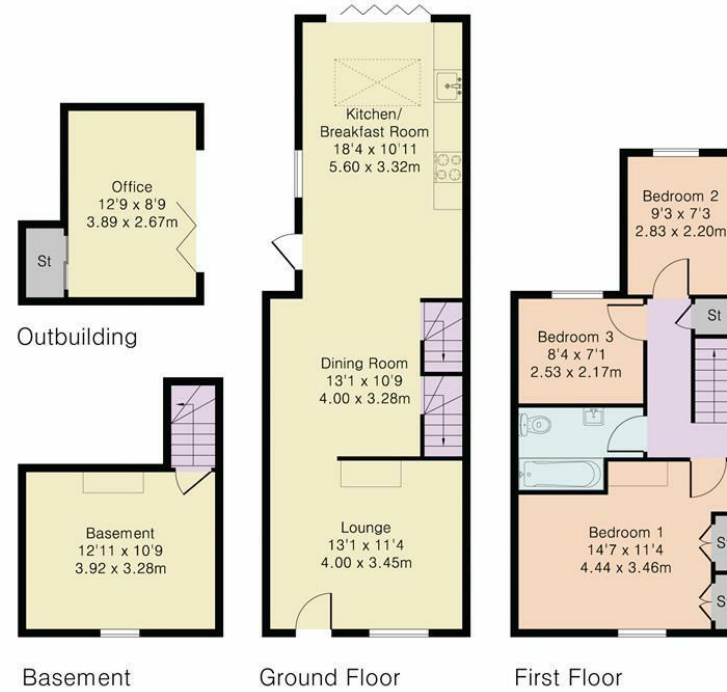


70 Fore Street, Hertford, Hertfordshire, SG14 1BY





Approximate Gross Internal Area 1173 sq ft – 110 sq m
 Basement Area 157 sq ft – 15 sq m
 Ground Floor Area 498 sq ft – 46 sq m
 First Floor Area 393 sq ft – 37 sq m
 Outbuilding Area 125 sq ft – 12 sq m



Although Pink Plan Ltd ensures the highest level of accuracy, measurements of doors, windows and rooms are approximate and no responsibility is taken for error, omission or misstatement. These plans are for representation purposes only as defined by RICS code of measuring practise. No guarantee is given on total square footage of the property within this plan. The figure icon is for initial guidance only and should not be relied on as a basis of valuation.



These particulars, whilst believed to be accurate are set out as a general outline only for guidance and do not constitute any part of an offer or contract. Intending purchasers should not rely on them as statements of representation of fact, but must satisfy themselves by inspection or otherwise as to their accuracy. No person in this firms employment has the authority to make or give any representation or warranty in respect of the property.



stevenoates.com