



Tooke House, Bull Plain, Hertford  
SG14 1DT  
Guide Price £345,000



[stevenoates.com](http://stevenoates.com)



### 3, Tooke House Bull Plain, Hertford, Hertfordshire, SG14 1DT

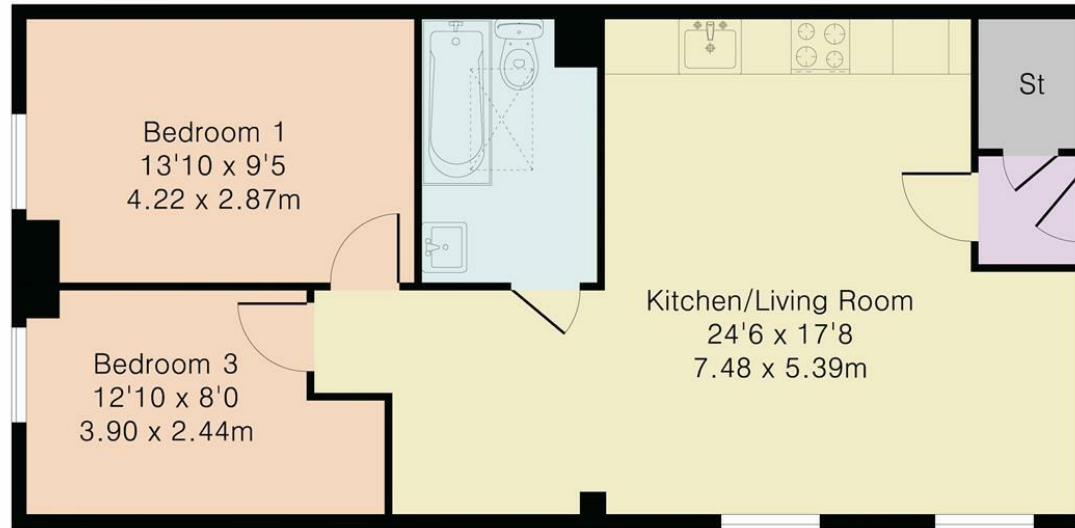
A spacious and newly converted 2 bedroom first floor apartment offering spacious and light accommodation forming part of this historic building, which is currently being converted to the highest of standards into just 5 luxury apartments. The property includes a large open plan living room, 2 bedrooms and a luxury bathroom. Total - 665 sqft - Viewing is available by appointment only.

Tooke House is located within an enviable position in the heart of the historic town centre. The town itself offers a variety of shops, restaurants and coffee shops. Bull Plain leads directly to the attractive River Lea providing excellent riverside walks and is now fronted by the regenerated Bircherley Green. Both Hertford East and Hertford North train stations are within easy reach providing services to London.



70 Fore Street, Hertford, Hertfordshire, SG14 1BY

Approximate Gross Internal Area 665 sq ft – 62 sq m



First Floor



These particulars, whilst believed to be accurate are set out as a general outline only for guidance and do not constitute any part of an offer or contract. Intending purchasers should not rely on them as statements of representation of fact, but must satisfy themselves by inspection or otherwise as to their accuracy. No person in this firm's employment has the authority to make or give any representation or warranty in respect of the property.



[stevenoates.com](http://stevenoates.com)