



Thorne Cottage, 14 Cole Green, Hertford

SG14 2NL

Guide Price £1,100,000



stevenoates.com



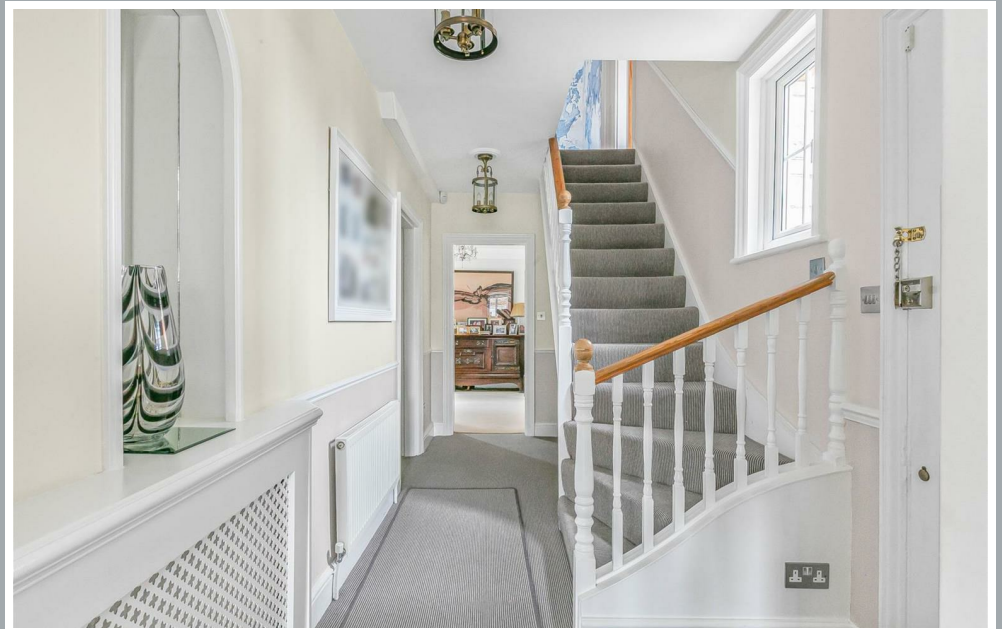
Thorne Cottage 14 Cole Green, Hertford, Hertfordshire, SG14 2NL

An exceptionally well presented and extended Edwardian family home located within arguably one of Hertford's most sought after villages directly adjoining a pretty village green. This charming family home offers versatile accommodation comprising of a large living room, dining room, bathroom and a large kitchen/breakfast room on the ground floor. On the first floor, there are 3 good size bedrooms and a further shower room. Externally, the property sits within a gated plot, which includes attractive gardens, ample driveway parking for circa 6 vehicles and a one bedroom self contained annexe. Viewing is highly recommended!

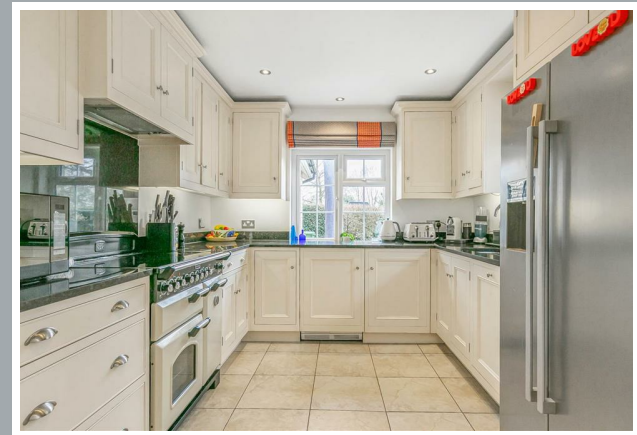
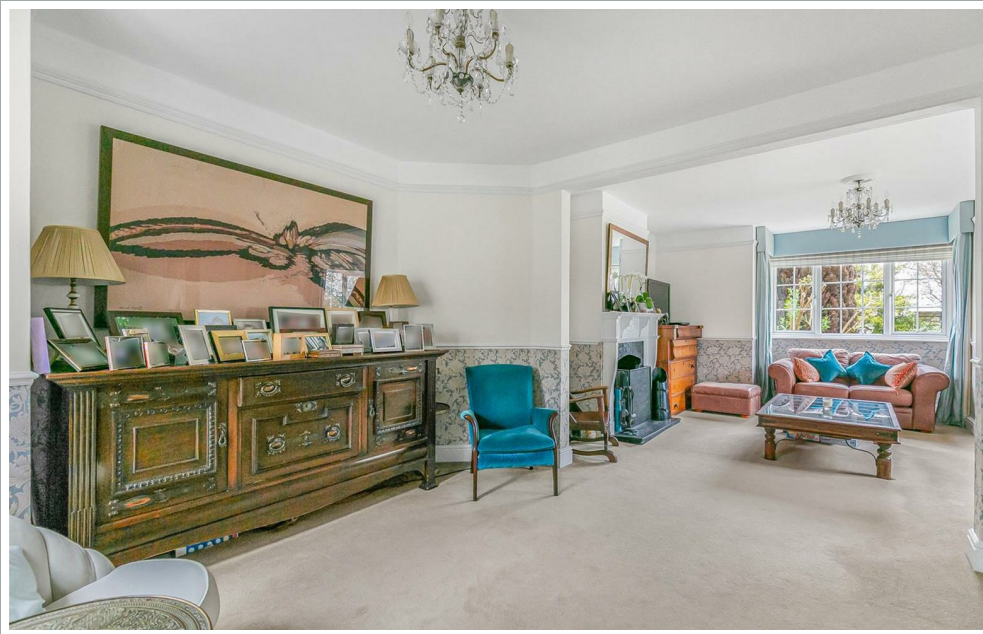
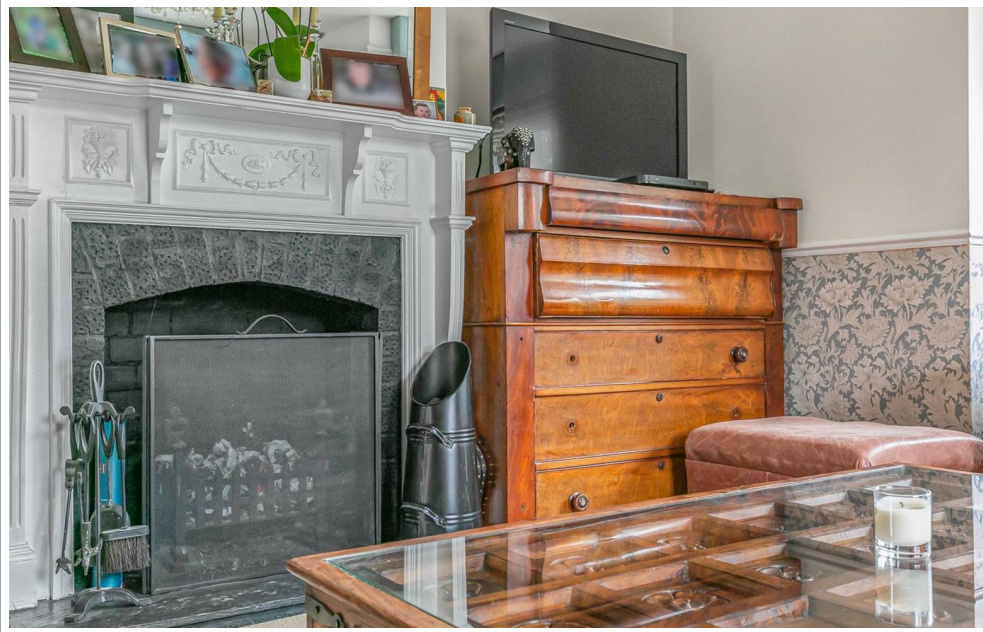
The property is situated in a truly unique location nestled amongst beautiful countryside within a highly sought after village hamlet on the western outskirts of Hertford, yet still offers easy access to both Hertford and Welwyn Garden City. The nearby towns both provide an excellent choice of shops and restaurants, along with schooling for all ages and mainline train stations providing fast links to London.



70 Fore Street, Hertford, Hertfordshire, SG14 1BY



70 Fore Street, Hertford, Hertfordshire, SG14 1BY



70 Fore Street, Hertford, Hertfordshire, SG14 1BY





70 Fore Street, Hertford, Hertfordshire, SG14 1BY



70 Fore Street, Hertford, Hertfordshire, SG14 1BY



70 Fore Street, Hertford, Hertfordshire, SG14 1BY

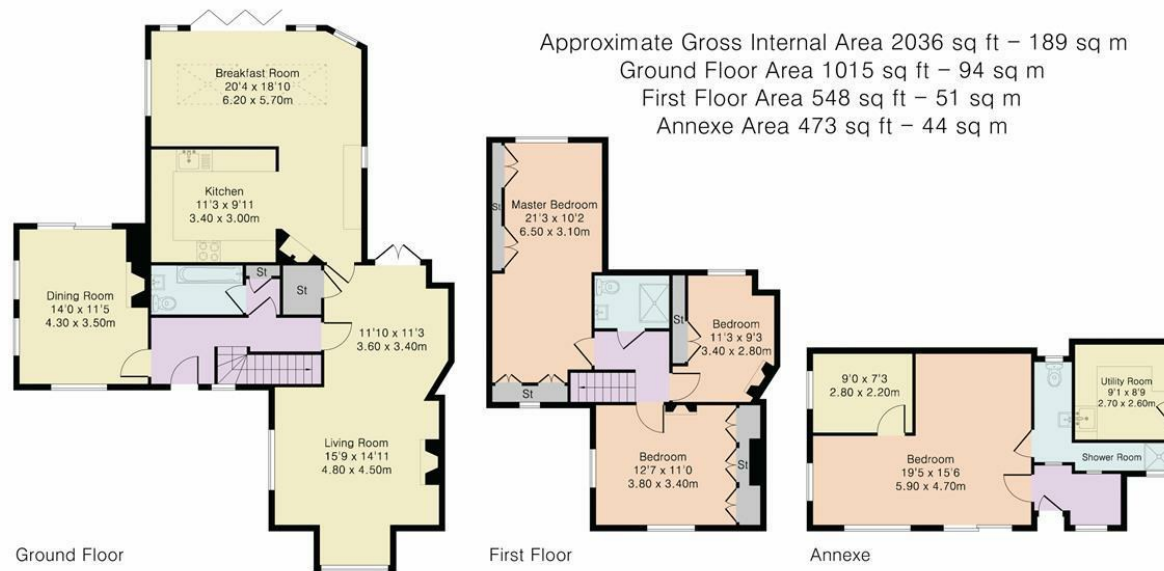




70 Fore Street, Hertford, Hertfordshire, SG14 1BY



70 Fore Street, Hertford, Hertfordshire, SG14 1BY



Although Pink Plan Ltd ensures the highest level of accuracy, measurements of doors, windows and rooms are approximate and no responsibility is taken for error, omission or misstatement. These plans are for representation purposes only as defined by RICS code of measuring practise. No guarantee is given on total square footage of the property within this plan. The figure icon is for initial guidance only and should not be relied on as a basis of valuation.



These particulars, whilst believed to be accurate are set out as a general outline only for guidance and do not constitute any part of an offer or contract. Intending purchasers should not rely on them as statements of representation of fact, but must satisfy themselves by inspection or otherwise as to their accuracy. No person in this firms employment has the authority to make or give any representation or warranty in respect of the property.

