



8a, Kingsfield Road, Dane End

SG12 0LY

Offers In Excess Of £585,000



stevenoates.com



8a Kingsfield Road, Dane End, Herts, SG12 0LY

A spacious 4 bedroom detached family home located within the heart of this idyllic village on the outskirts of Ware. The extended accommodation comprises of an entrance hall, downstairs WC, large living room, dining room, kitchen and conservatory on the ground floor. On the first floor, there are 4 bedrooms, a family bathroom and en-suite shower room to the main bedroom. Outside, the driveway provides ample parking, whilst the rear garden offers excellent seclusion with a large paved terrace and a high grade artificial lawn for all year round use.

The property is located within a quiet residential road in the heart of this popular semi-rural village on the outskirts of Ware. The village benefits from great amenities including a village primary school, shop and a village pub. For further amenities the larger village of Watton At Stone is a short drive away providing more localised shops, pubs and a mainline train station serving London. Both Ware and Hertford are also a short drive away offering even more choice of shops, restaurants, excellent schooling for all ages and train stations serving London.



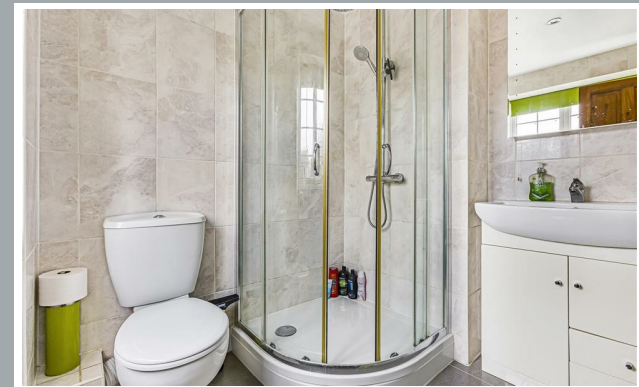
70 Fore Street, Hertford, Hertfordshire, SG14 1BY



70 Fore Street, Hertford, Hertfordshire, SG14 1BY



70 Fore Street, Hertford, Hertfordshire, SG14 1BY

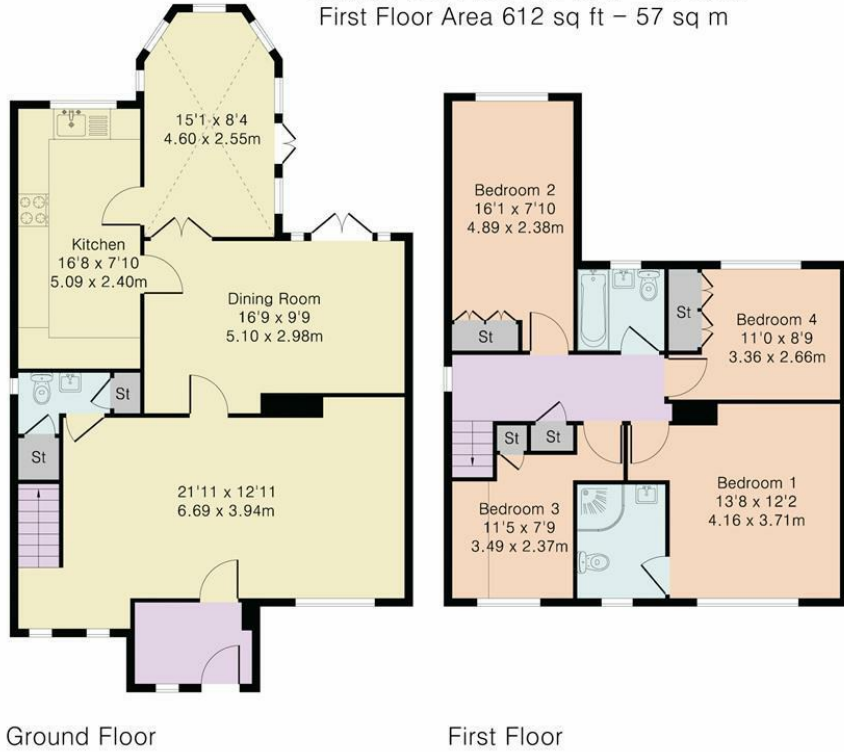


70 Fore Street, Hertford, Hertfordshire, SG14 1BY



70 Fore Street, Hertford, Hertfordshire, SG14 1BY

Approximate Gross Internal Area 1424 sq ft – 132 sq m
Ground Floor Area 812 sq ft – 75 sq m
First Floor Area 612 sq ft – 57 sq m



Although Pink Plan Ltd ensures the highest level of accuracy, measurements of doors, windows and rooms are approximate and no responsibility is taken for error, omission or misstatement. These plans are for representation purposes only as defined by RICS code of measuring practise. No guarantee is given on total square footage of the property within this plan. The figure icon is for initial guidance only and should not be relied on as a basis of valuation.



These particulars, whilst believed to be accurate are set out as a general outline only for guidance and do not constitute any part of an offer or contract. Intending purchasers should not rely on them as statements of representation of fact, but must satisfy themselves by inspection or otherwise as to their accuracy. No person in this firms employment has the authority to make or give any representation or warranty in respect of the property.



stevenoates.com