



9, Ware Park Manor, Ware
SG12 0DX

Offers In Excess Of £450,000



stevenoates.com



9 Ware Park Manor, Ware, Hertfordshire, SG12 0DX

Ware Park Manor is surrounded by communal gardens and countryside beyond offering a peaceful and tranquil environment, yet is less than a mile away from the highly regarded residential area of Bengo. Hertford town centre is also less than 1.5 miles away.

Ware Park Manor is surrounded by communal gardens and countryside beyond offering a peaceful and tranquil environment, yet is less than a mile away from the highly regarded residential area of Bengo. Hertford town centre is also less than 1.5 miles away.



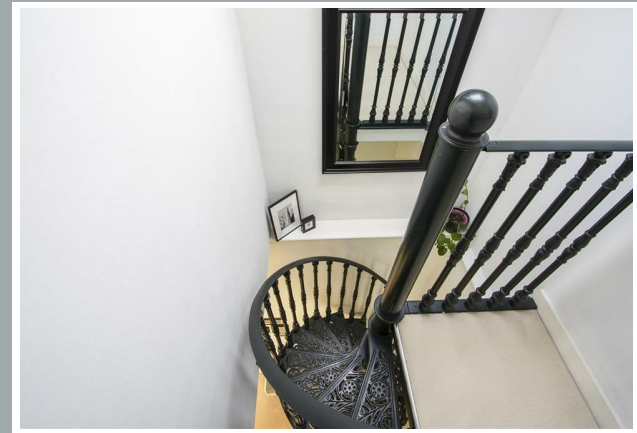
70 Fore Street, Hertford, Hertfordshire, SG14 1BY



70 Fore Street, Hertford, Hertfordshire, SG14 1BY



70 Fore Street, Hertford, Hertfordshire, SG14 1BY

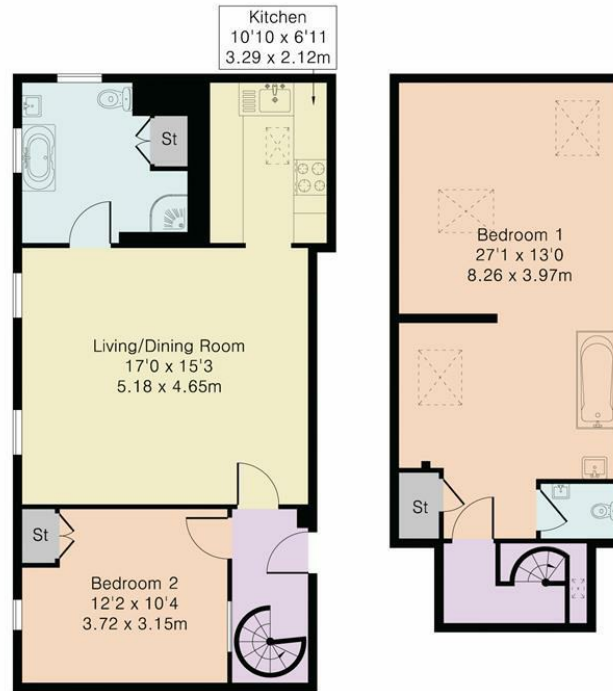


70 Fore Street, Hertford, Hertfordshire, SG14 1BY



70 Fore Street, Hertford, Hertfordshire, SG14 1BY

Approximate Gross Internal Area 1013 sq ft – 94 sq m
First Floor Area 617 sq ft – 57 sq m
Second Floor Area 396 sq ft – 37 sq m



First Floor

Second Floor



Although Pink Plan Ltd ensures the highest level of accuracy, measurements of doors, windows and rooms are approximate and no responsibility is taken for error, omission or misstatement. These plans are for representation purposes only as defined by RICS code of measuring practise. No guarantee is given on total square footage of the property within this plan. The figure icon is for initial guidance only and should not be relied on as a basis of valuation.



stevenoates.com

These particulars, whilst believed to be accurate are set out as a general outline only for guidance and do not constitute any part of an offer or contract. Intending purchasers should not rely on them as statements of representation of fact, but must satisfy themselves by inspection or otherwise as to their accuracy. No person in this firm's employment has the authority to make or give any representation or warranty in respect of the property.