



14, Devey Way, Hertford
SG14 2WU
Guide Price £925,000



stevenoates.com



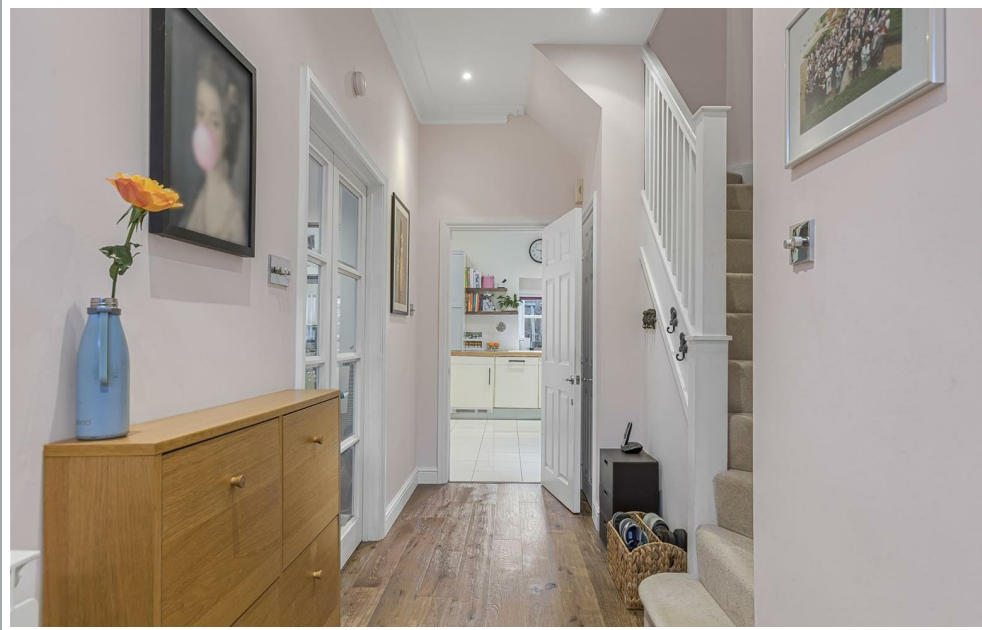
14 Devey Way, Goldings, Hertford, SG14 2WU

An outstanding four bedroom character house set within the exclusive Goldings Country Estate. The generous accommodation includes a large entrance hall, ground floor cloakroom, large living room, spacious kitchen/diner leading onto the rear garden. On the first floor, there is a large main bedroom suite including a modern bathroom en-suite, 3 further double bedrooms and a modern family shower room. Externally the property benefits from a secluded mature rear garden car port and ample further parking directly opposite the property. Goldings itself is a gated country estate set in beautiful grounds of almost 110 acres with a collection of stunning houses and a grand converted manor house all within easy reach of Hertford North train station.

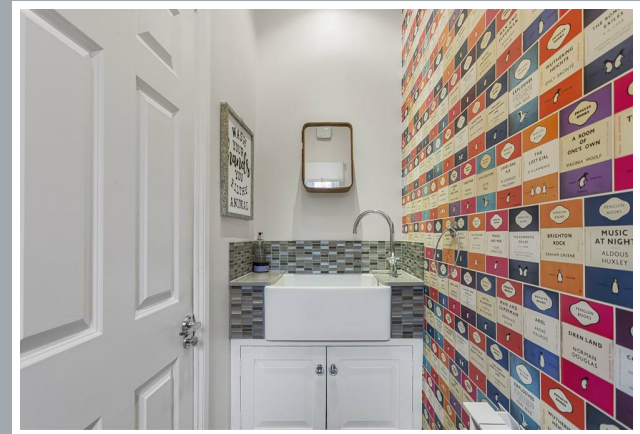
The property is nestled within the beautiful grounds of the Goldings Country Estate located on the northern outskirts of Hertford itself. Hertford North train station is only a short distance away and provides fast services to London's Kings Cross and Moorgate. Hertford town centre is also closeby serving as a quaint market town with a 'coffee shop' culture and excellent choice of shops and restaurants.



70 Fore Street, Hertford, Hertfordshire, SG14 1BY



70 Fore Street, Hertford, Hertfordshire, SG14 1BY



70 Fore Street, Hertford, Hertfordshire, SG14 1BY



70 Fore Street, Hertford, Hertfordshire, SG14 1BY



70 Fore Street, Hertford, Hertfordshire, SG14 1BY



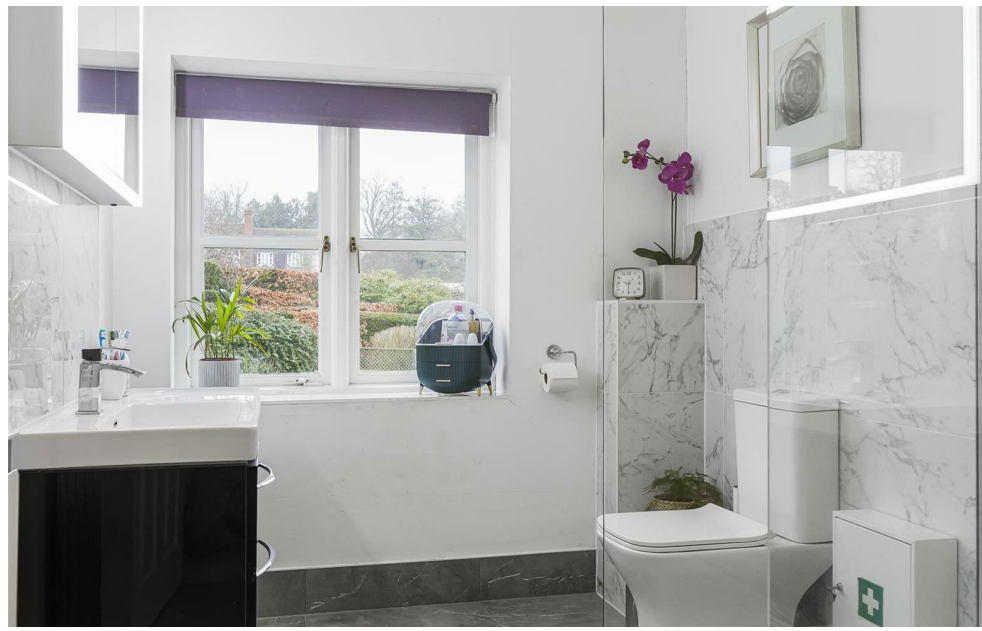
70 Fore Street, Hertford, Hertfordshire, SG14 1BY



70 Fore Street, Hertford, Hertfordshire, SG14 1BY



70 Fore Street, Hertford, Hertfordshire, SG14 1BY



70 Fore Street, Hertford, Hertfordshire, SG14 1BY



70 Fore Street, Hertford, Hertfordshire, SG14 1BY

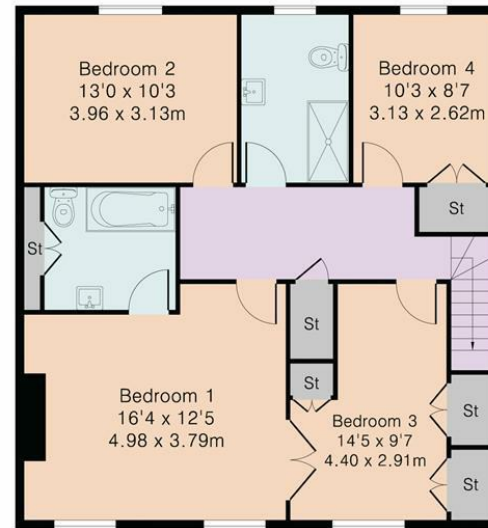


70 Fore Street, Hertford, Hertfordshire, SG14 1BY

Approximate Gross Internal Area 1770 sq ft – 164 sq m
Ground Floor Area 885 sq ft – 82 sq m
First Floor Area 885 sq ft – 82 sq m



Ground Floor



First Floor



Although Pink Plan Ltd ensures the highest level of accuracy, measurements of doors, windows and rooms are approximate and no responsibility is taken for error, omission or misstatement. These plans are for representation purposes only as defined by RICS code of measuring practise. No guarantee is given on total square footage of the property within this plan. The figure icon is for initial guidance only and should not be relied on as a basis of valuation.



These particulars, whilst believed to be accurate are set out as a general outline only for guidance and do not constitute any part of an offer or contract. Intending purchasers should not rely on them as statements of representation of fact, but must satisfy themselves by inspection or otherwise as to their accuracy. No person in this firms employment has the authority to make or give any representation or warranty in respect of the property.



stevenoates.com