



Plot 7, Hanbury View, Ware
SG12 0UG
Guide Price £720,000



stevenoates.com



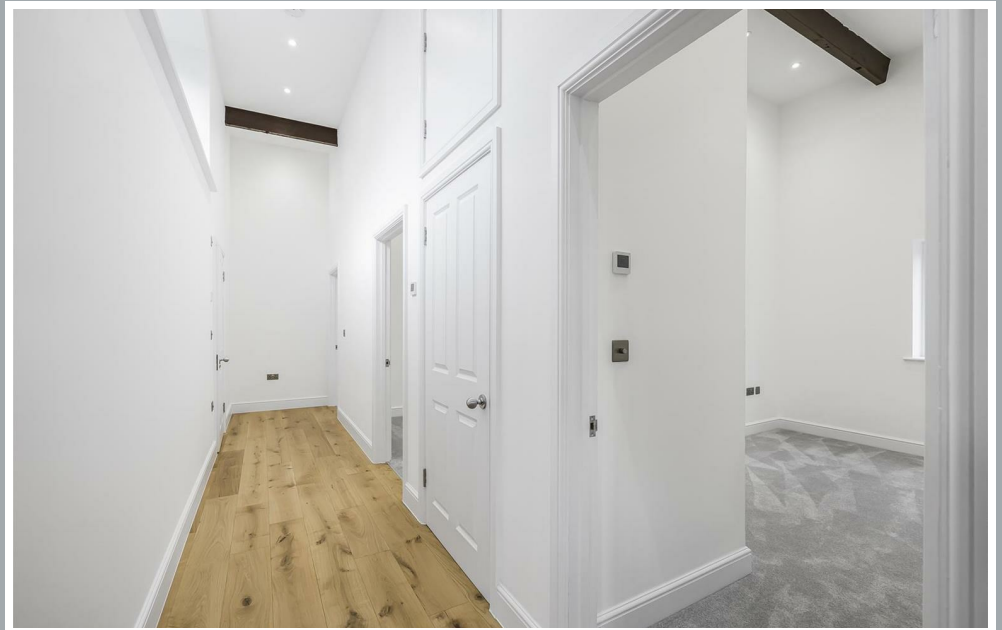
Plot 7 Hanbury View, Moles Farm, Ware, Hertfordshire, SG12 0UG

LAST 2 PLOTS REMAINING - An exceptional, brand newly converted single storey barn located within this small and exclusive development on the outskirts of Ware. The property offers truly stunning single storey accommodation which includes a large open plan vaulted living room incorporating a fully integrated kitchen, 3 double bedrooms, a bathroom and en-suite shower room. Externally, there is a good size private garden and allocated parking directly to the front of the property. **CALL TODAY TO VIEW!**

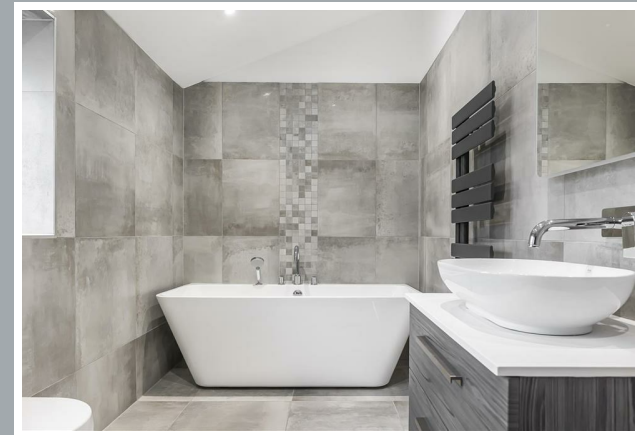
Hanbury View is nestled amongst some of Hertfordshire finest countryside only a short distance from Ware town and the highly acclaimed Hanbury Manor Country & Golf Club, offering the perfect blend of a tranquil country location combined with easy access to the local amenities. For commuting, the A10 is only a short distance away with direct access to London and the M25, whilst there is a choice of mainline train stations all within a short drive away.



70 Fore Street, Hertford, Hertfordshire, SG14 1BY



70 Fore Street, Hertford, Hertfordshire, SG14 1BY



70 Fore Street, Hertford, Hertfordshire, SG14 1BY

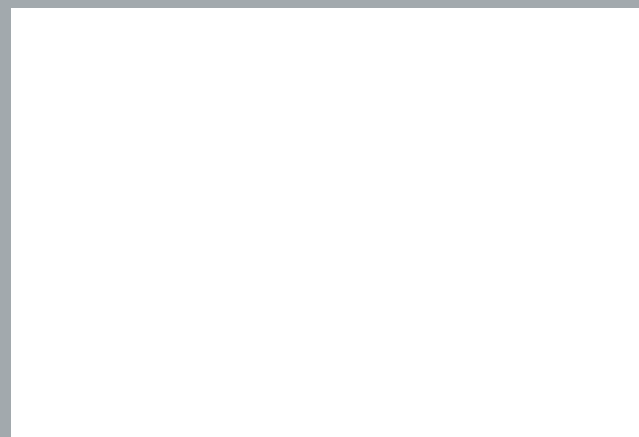




70 Fore Street, Hertford, Hertfordshire, SG14 1BY



70 Fore Street, Hertford, Hertfordshire, SG14 1BY



Approximate Gross Internal Area 1109 sq ft – 103 sq m



Ground Floor

These particulars, whilst believed to be accurate are set out as a general outline only for guidance and do not constitute any part of an offer or contract. Intending purchasers should not rely on them as statements of representation of fact, but must satisfy themselves by inspection or otherwise as to their accuracy. No person in this firm's employment has the authority to make or give any representation or warranty in respect of the property.



stevenoates.com