



Plot 4, Bluebells Of Hertford, Hertford

SG14 1PQ

Guide Price £625,000



stevenoates.com



Plot 4 Bluebells Of Hertford, Cowbridge, Hertford, Herts, SG14 1PQ

A substantial 3 double bedroom contemporary home offering stylishly presented accommodation over 3 floors. An exciting new development of just 6 luxury 'mews style' homes directly adjoining a section of the River Beane nestled within a popular town centre location. This attractive modern houses are being built to a high specification and are due for completion by April 2024. Call for further details.

The development is located within a prime position, only a short distance from Hertford's thriving town centre. Both mainline train stations are within similar distances with Hertford North providing fast services to London's Finsbury Park, Moorgate and Kings Cross, whilst Hertford East runs directly to Tottenham Hale and Liverpool Street. Hartham Common is a short walkaway providing an excellent green space with riverside walks, a active tennis club and Hartham Swimming Pool & Gym.



70 Fore Street, Hertford, Hertfordshire, SG14 1BY

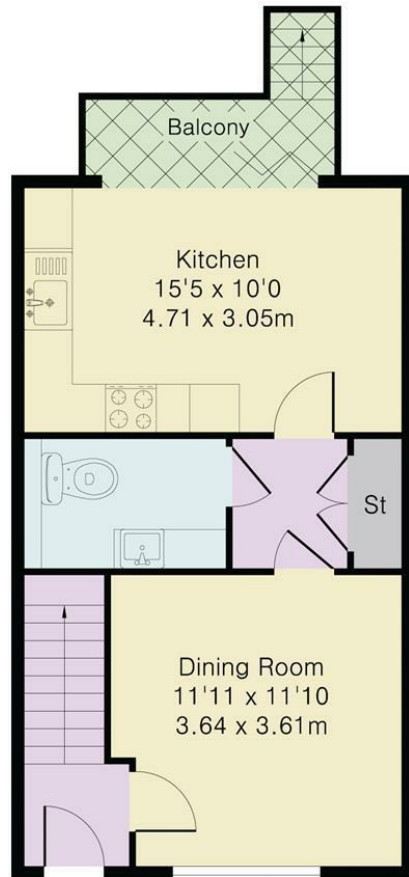


70 Fore Street, Hertford, Hertfordshire, SG14 1BY

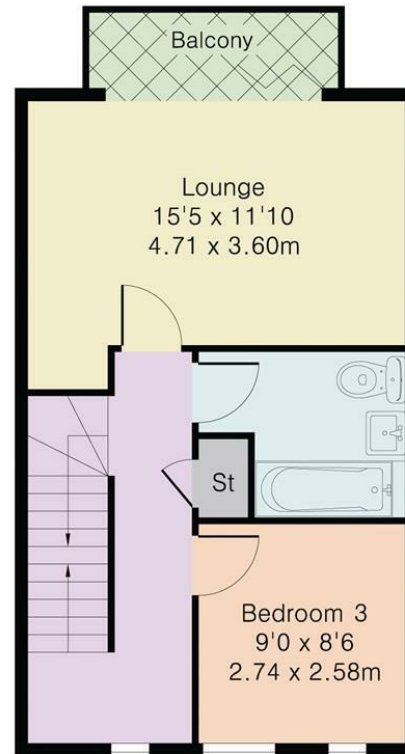


70 Fore Street, Hertford, Hertfordshire, SG14 1BY

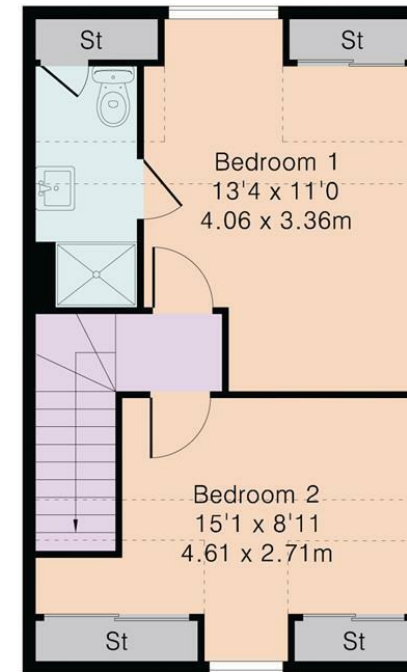
Approximate Gross Internal Area 1147 sq ft – 107 sq m



Ground Floor



First Floor



Second Floor

These particulars, whilst believed to be accurate are set out as a general outline only for guidance and do not constitute any part of an offer or contract. Intending purchasers should not rely on them as statements of representation of fact, but must satisfy themselves by inspection or otherwise as to their accuracy. No person in this firm's employment has the authority to make or give any representation or warranty in respect of the property.



stevenoates.com