



26, Easington Road, Ware

SG12 0LX

Price Guide £510,000



[stevenoates.com](http://stevenoates.com)



## 26 Easington Road, Dane End, Ware, SG12 0LX

\*\*\*\*CHAIN FREE\*\*\*\* Steven Oates are delighted to offer this three bedroom link detached house situated in a quiet residential cul-de-sac backing onto countryside. The property benefits from three reception rooms, ground floor cloakroom, large principle bedroom with en-suite shower room, family bathroom, off-street parking and garage. Keys held.

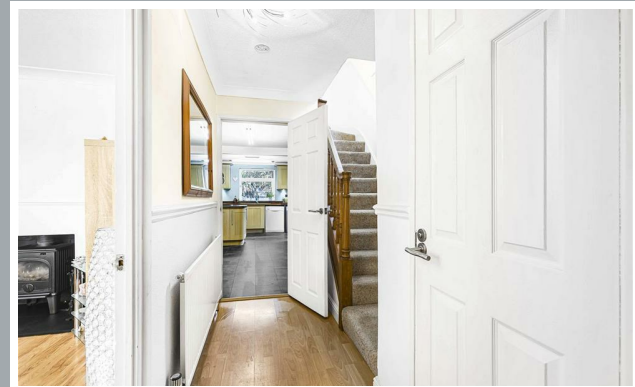
The village benefits from a village pub, church, shop and primary school, a plethora of clubs and social activities. Surrounded by outstanding rolling Hertfordshire countryside - a haven for cyclists, walkers and equestrian pursuits. The nearby towns of Ware and Hertford, just a short drive away, provide a wide choice of shops, restaurants and excellent schooling for all ages. For commuters, a choice of stations serve London from Hertford, Ware, Stevenage and also Watton At Stone. Excellent schooling is also available in the nearby towns of Hertford and Ware including Richard Hale, Presdales and Simon Balle. For independent schooling, Heathmount, St Edmunds College and Haileybury are a few minutes' drive away.



70 Fore Street, Hertford, Hertfordshire, SG14 1BY



70 Fore Street, Hertford, Hertfordshire, SG14 1BY



70 Fore Street, Hertford, Hertfordshire, SG14 1BY





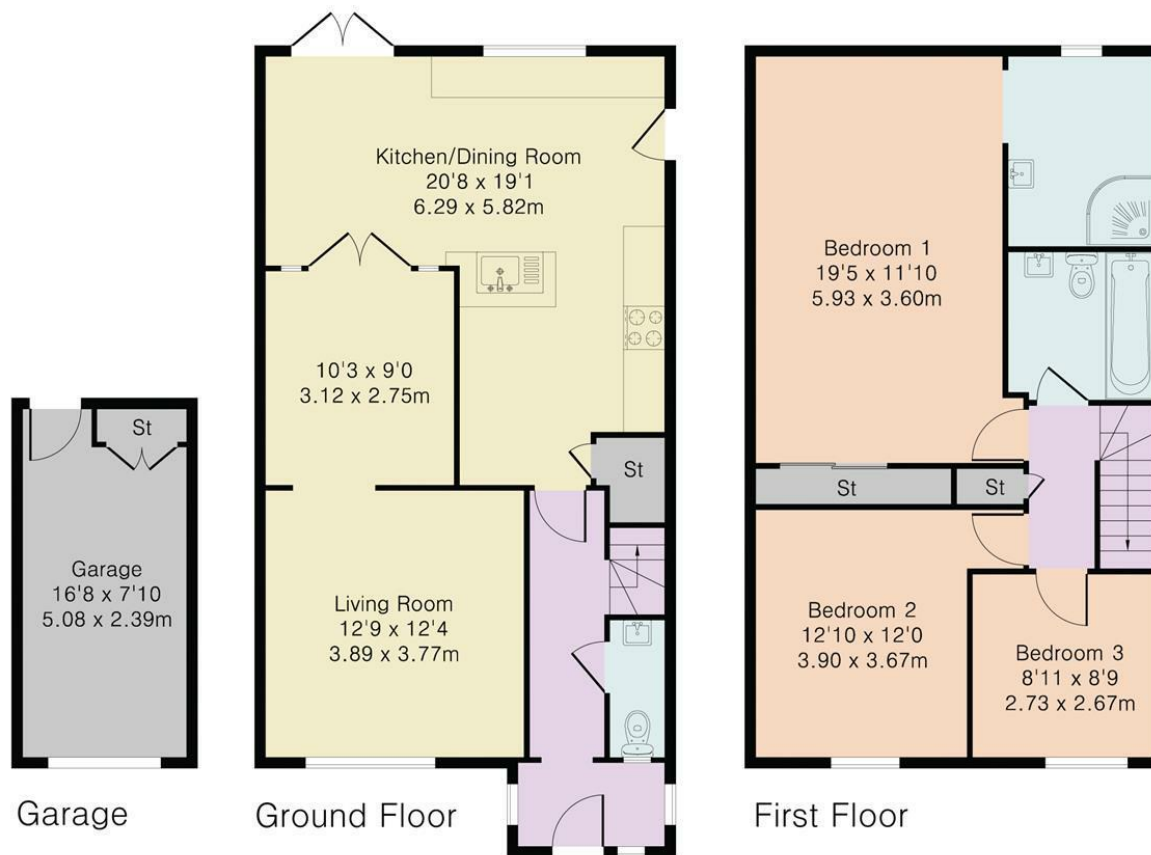
70 Fore Street, Hertford, Hertfordshire, SG14 1BY



70 Fore Street, Hertford, Hertfordshire, SG14 1BY



Approximate Gross Internal Area 1441 sq ft – 133 sq m  
Ground Floor Area 670 sq ft – 62 sq m  
First Floor Area 640 sq ft – 59 sq m  
Garage Area 131 sq ft – 12 sq m



These particulars, whilst believed to be accurate are set out as a general outline only for guidance and do not constitute any part of an offer or contract. Intending purchasers should not rely on them as statements of representation of fact, but must satisfy themselves by inspection or otherwise as to their accuracy. No person in this firm's employment has the authority to make or give any representation or warranty in respect of the property.



[stevenoates.com](http://stevenoates.com)