



15, Vicarage Causeway, Hertford Heath

SG13 7RT

Guide Price £575,000



stevenoates.com



15 Vicarage Causeway, Hertford Heath, Hertfordshire, SG13 7RT

A rare opportunity to purchase this 3 bedroom detached bungalow located within this highly sought after village lane which leads directly to the pretty village green. The property offers excellent versatility with accommodation including an entrance hall, large open plan living room, a kitchen/breakfast, large conservatory, 3 bedrooms, a main bathroom and en-suite shower room. Externally, there is driveway parking for at least 2 cars, whilst the remaining front garden is enclosed by a mature hedge, making it a very useable space. To the rear, the garden is lawned with a large vegetable garden and a locked garden store. The property is chain free and viewing is available immediately.

The property is located only a 'stones throw' away from the pretty village green which has a village pub, The Goat and direct access to a large protected woodlands. The village offers excellent local facilities including a village store, additional 2 pubs, local primary school and the ever popular Haileybury Private School. The nearby town of Hertford is only approximately 1.5 miles away and provides a variety of shops, restaurants and schools, along with a choice of two mainline train stations which serve London.



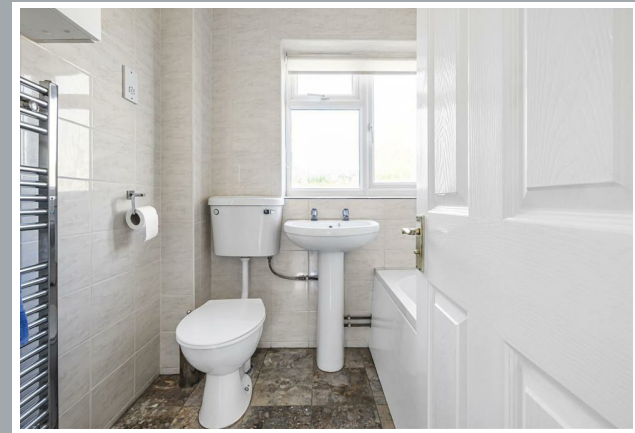
70 Fore Street, Hertford, Hertfordshire, SG14 1BY



70 Fore Street, Hertford, Hertfordshire, SG14 1BY



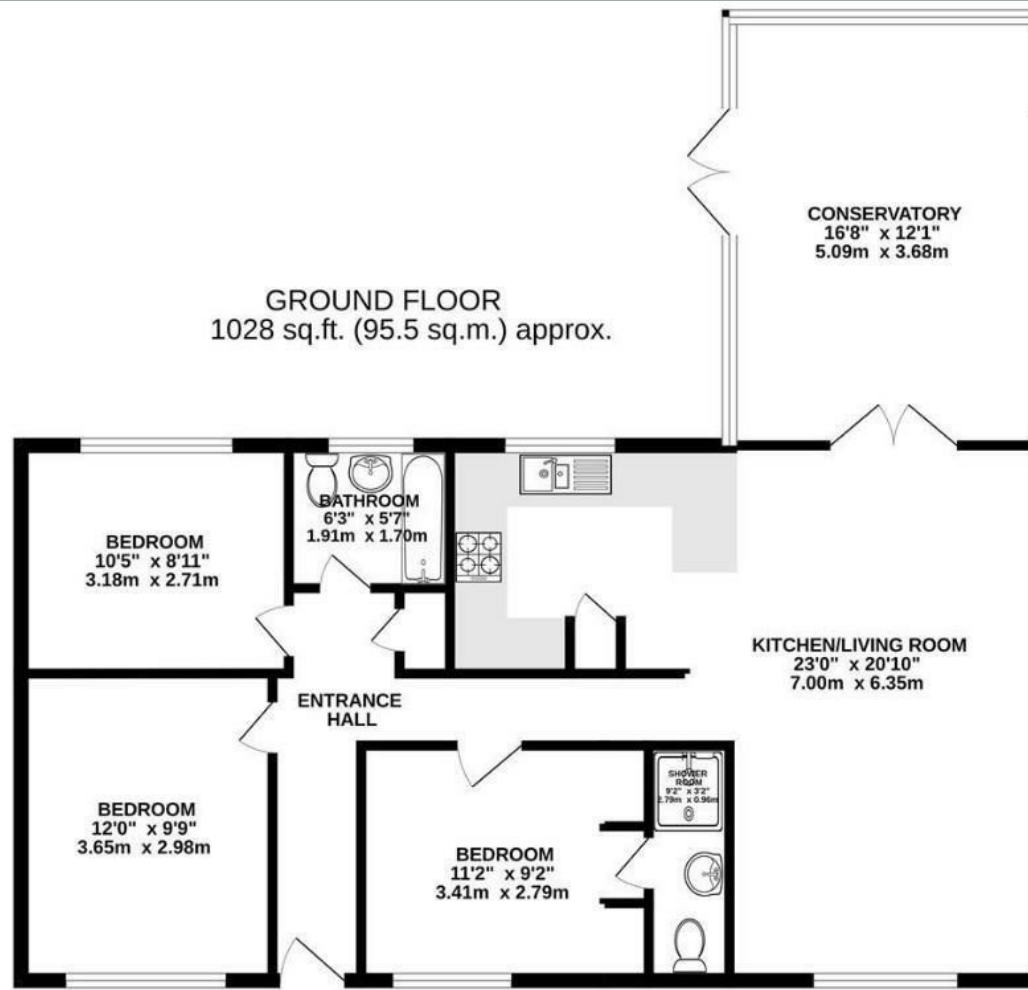
70 Fore Street, Hertford, Hertfordshire, SG14 1BY



70 Fore Street, Hertford, Hertfordshire, SG14 1BY



70 Fore Street, Hertford, Hertfordshire, SG14 1BY



GROUND FLOOR
1028 sq.ft. (95.5 sq.m.) approx.

BEDROOM
10'5" x 8'11"
3.18m x 2.71m

BATHROOM
6'3" x 5'7"
1.91m x 1.70m

KITCHEN/LIVING ROOM
23'0" x 20'10"
7.00m x 6.35m

ENTRANCE
HALL

BEDROOM
12'0" x 9'9"
3.65m x 2.98m

BEDROOM
11'2" x 9'2"
3.41m x 2.79m

SHOWER ROOM
8'2" x 3'2"
2.79m x 0.96m

TOTAL FLOOR AREA: 1028 sq.ft. (95.5 sq.m.) approx.

Whilst every attempt has been made to ensure the accuracy of the floorplan contained here, measurements of doors, windows, rooms and any other items are approximate and no responsibility is taken for any error, omission or mis-statement. This plan is for illustrative purposes only and should be used as such by any prospective purchaser. The services, systems and appliances shown have not been tested and no guarantee as to their operability or efficiency can be given.
Made with Metreplex ©2023



These particulars, whilst believed to be accurate are set out as a general outline only for guidance and do not constitute any part of an offer or contract. Intending purchasers should not rely on them as statements of representation of fact, but must satisfy themselves by inspection or otherwise as to their accuracy. No person in this firm's employment has the authority to make or give any representation or warranty in respect of the property.



stevenoates.com