



18, Tolmers Gardens, Cuffley

EN6 4JE

Guide Price £875,000



stevenoates.com



18 Tolmers Gardens, Cuffley, Hertfordshire, EN6 4JE

A spacious 5 bedroom detached family home located within a highly sought after cul de sac location only a short distance from Cuffley train station. The property offers extended accommodation including a entrance hall with downstairs wc, 3 reception rooms, a kitchen/breakfast room, attractive elevated views to the front and an integral garage on the ground floor, whilst on the first floor, there are 5 bedrooms and 2 bathrooms. Chain Free - Viewing available immediately.

Located within one of Cuffley's most sought after residential roads, the property is only a short distance from Cuffley station which provides fast trains to London's Moorgate (approx.. 42 mins). Cuffley's excellent choice of localised shops are also close by including a Tesco's Metro, bakery and choice of restaurants to name but a few.



70 Fore Street, Hertford, Hertfordshire, SG14 1BY



70 Fore Street, Hertford, Hertfordshire, SG14 1BY



70 Fore Street, Hertford, Hertfordshire, SG14 1BY





70 Fore Street, Hertford, Hertfordshire, SG14 1BY



70 Fore Street, Hertford, Hertfordshire, SG14 1BY

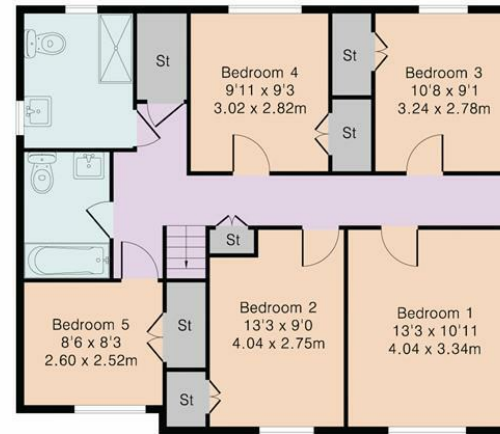


Outbuilding

Approximate Gross Internal Area 1946 sq ft – 181 sq m
 Ground Floor Area 948 sq ft – 88 sq m
 First Floor Area 895 sq ft – 83 sq m
 Outbuilding Area 103 sq ft – 10 sq m



Ground Floor



First Floor



Although Pink Plan Ltd ensures the highest level of accuracy, measurements of doors, windows and rooms are approximate and no responsibility is taken for error, omission or misstatement. These plans are for representation purposes only as defined by RICS code of measuring practise. No guarantee is given on total square footage of the property within this plan. The figure icon is for initial guidance only and should not be relied on as a basis of valuation.



These particulars, whilst believed to be accurate are set out as a general outline only for guidance and do not constitute any part of an offer or contract. Intending purchasers should not rely on them as statements of representation of fact, but must satisfy themselves by inspection or otherwise as to their accuracy. No person in this firms employment has the authority to make or give any representation or warranty in respect of the property.



stevenoates.com