



3, Lady St. Johns Square, Hertford
SG14 2WS

Offers In The Region Of £649,995



stevenoates.com



3 Lady St. Johns Square, Goldings Estate, Hertford, Hertfordshire, SG14 2WS

A rare opportunity to purchase this attractive 3 bedroom freehold house forming part of this stunning Victorian stable conversion set within the exclusive gated development of Goldings. The property benefits from generous ceilings throughout the accommodation which comprising of a good size entrance hall with downstairs wc, a large dual aspect living room and a kitchen/breakfast room, whilst on the 1st floor, there are 3 good size bedrooms, a main bathroom and en-suite shower room. Externally, there is an allocated car port with additional parking, a small private garden and the enjoyment of the stunning 110 acres of grounds within the estate. Chain Free - Viewing Recommended!

Lady St. Johns Square is nestled within the beautiful grounds of the Goldings Country Estate located on the northern outskirts of Hertford itself. Hertford North train station is only a short distance away and provides fast services to London's Kings Cross and Moorgate. Hertford town centre is also close by serving as a quaint market town with a 'coffee shop' culture and excellent choice of shops and restaurants. All of Hertford's popular schools are within easy reach, whilst Heathmount school is also a short drive away.



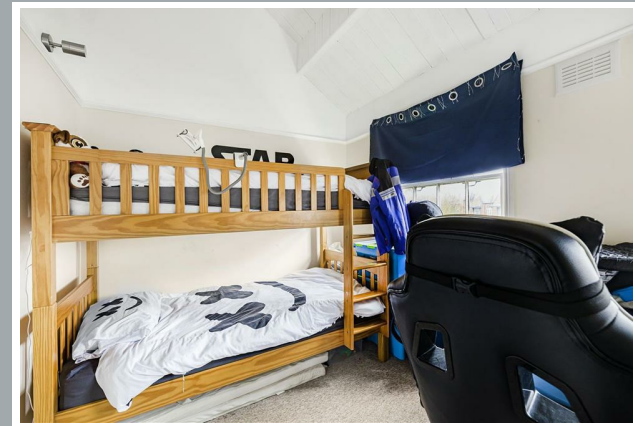
70 Fore Street, Hertford, Hertfordshire, SG14 1BY



70 Fore Street, Hertford, Hertfordshire, SG14 1BY



70 Fore Street, Hertford, Hertfordshire, SG14 1BY



70 Fore Street, Hertford, Hertfordshire, SG14 1BY



70 Fore Street, Hertford, Hertfordshire, SG14 1BY

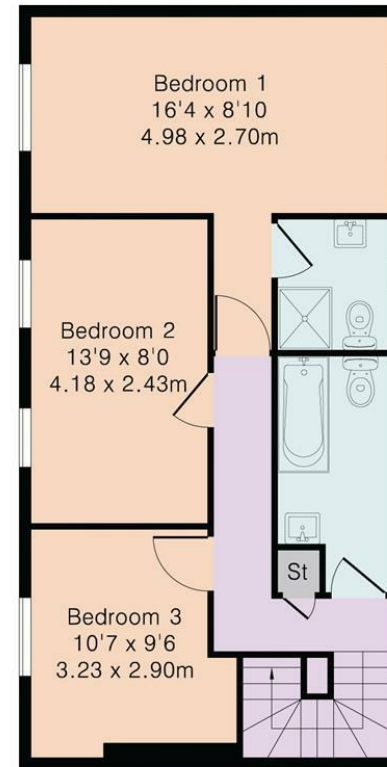
Approximate Gross Internal Area 1088 sq ft – 100 sq m

Ground Floor Area 544 sq ft – 50 sq m

First Floor Area 544 sq ft – 50 sq m



Ground Floor



First Floor

These particulars, whilst believed to be accurate are set out as a general outline only for guidance and do not constitute any part of an offer or contract. Intending purchasers should not rely on them as statements of representation of fact, but must satisfy themselves by inspection or otherwise as to their accuracy. No person in this firm's employment has the authority to make or give any representation or warranty in respect of the property.



stevenoates.com