

Est. 1947

tomkinsdavis

www.tomkinsdavis.co.uk



Eastcote Lane, South Harrow Middlesex HA2 8RR

£1,700

EPC Current Band: C

DEPOSIT ALTERNATIVE AVAILABLE

A stunning ground floor two bed apartment with large private garden terrace and a parking space. Set in this lovely development of just 4 homes, the property offers exceptionally spacious two bed accommodation comprising a fitting open plan living-kitchen with direct access to garden terrace, two large double bedrooms and beautifully equipped bathroom suite. Conveniently located with an array of local amenities close by, providing excellent road links and access to transport with train services to Central London within walking distance.

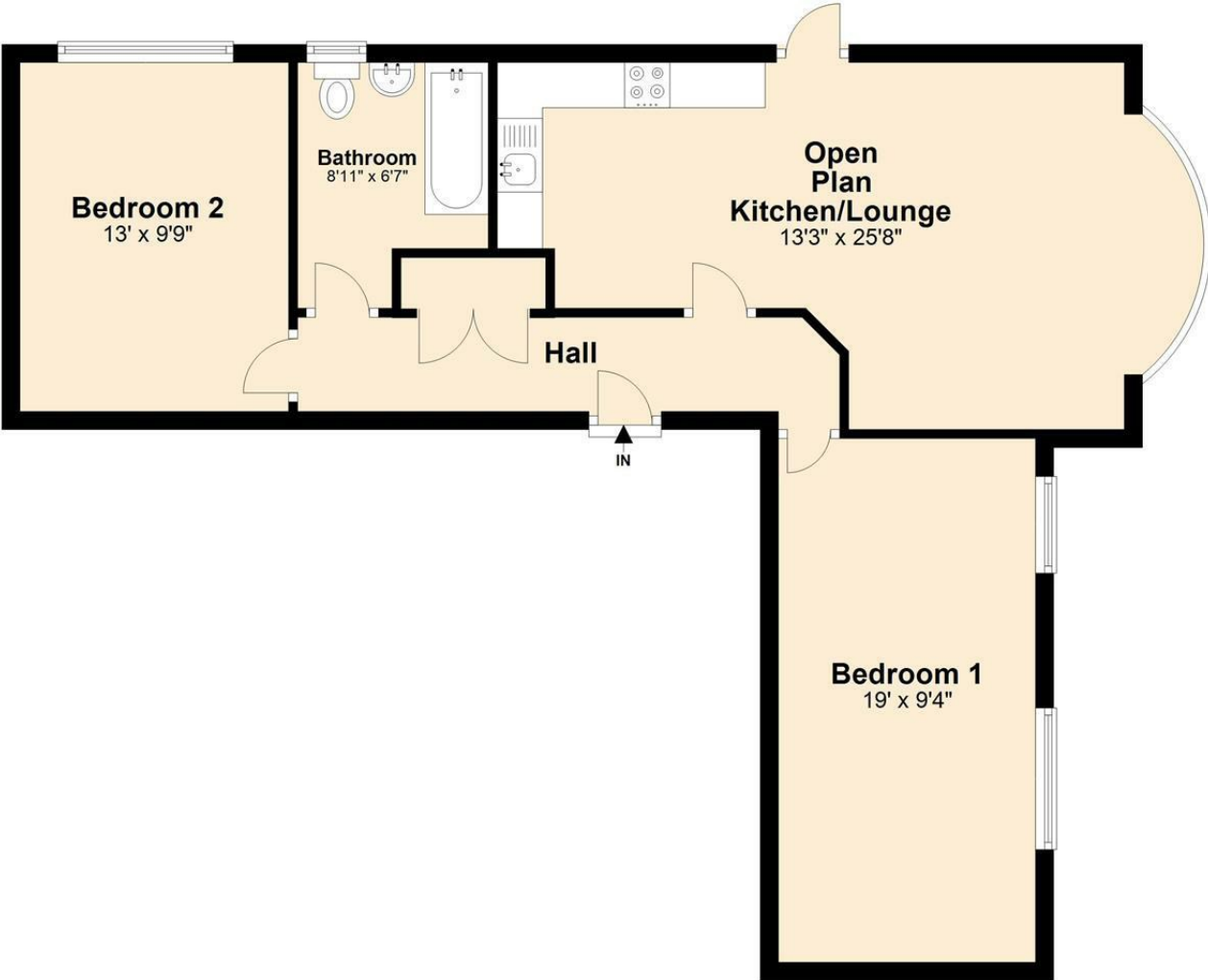
Property would be ideally suited to a small family.

COUNCIL TAX: Band C

HOLDING RETAINER (equivalent to one weeks rental) £390



Ground Floor



Energy Efficiency Rating		
	Current	Potential
Very energy efficient - lower running costs		
(92 plus) A		
(81-91) B		
(69-80) C		
(55-68) D		
(39-54) E		
(21-38) F		
(1-20) G		
Not energy efficient - higher running costs		
England & Wales	EU Directive 2002/91/EC	

Environmental Impact (CO ₂) Rating		
	Current	Potential
Very environmentally friendly - lower CO ₂ emissions		
(92 plus) A		
(81-91) B		
(69-80) C		
(55-68) D		
(39-54) E		
(21-38) F		
(1-20) G		
Not environmentally friendly - higher CO ₂ emissions		
England & Wales	EU Directive 2002/91/EC	

Whilst every attempt has been made to ensure the accuracy of the floor plan contained here, measurements of doors, windows, rooms and other areas are approximate and no responsibility taken for any error, omission or mis-statement. This plan is for illustration purposes only and should be used as such by any prospective purchaser or advisor. Tomkins Davis have not tested any apparatus, equipment, fixtures and fittings or services therefore cannot verify that they are in good working order or fit for purpose. Neither have we checked any legal documentation to verify the leasehold or freehold status of the property and advise any purchaser to obtain verification from their solicitor or surveyor.