

Est. 1947

tomkinsdavis

www.tomkinsdavis.co.uk



Maple Close, Middlesex UB4 9NH

£1,250

EPC Current Band: D

DEPOSIT ALTERNATIVE AVAILABLE

A well presented one bed second floor flat comprising a semi open plan living-kitchen with appliances, sizeable double bedroom, modern bath suite and spacious storage room.

Further benefits include double glazed windows/doors, gas central heating and private balcony.

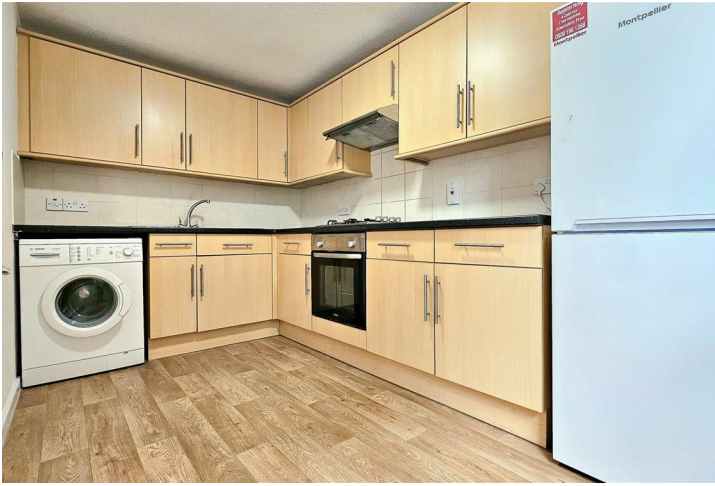
Located off Yeading Lane with local bus routes with links to Northolt, Hayes Town Centre & Train Station and Heathrow Airport.

Ideally suited to a single adult or couple.

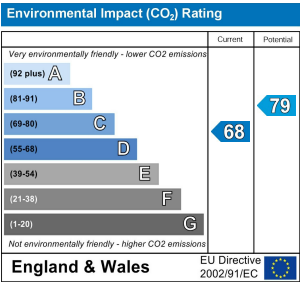
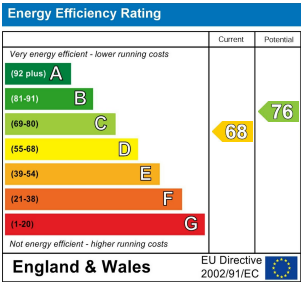
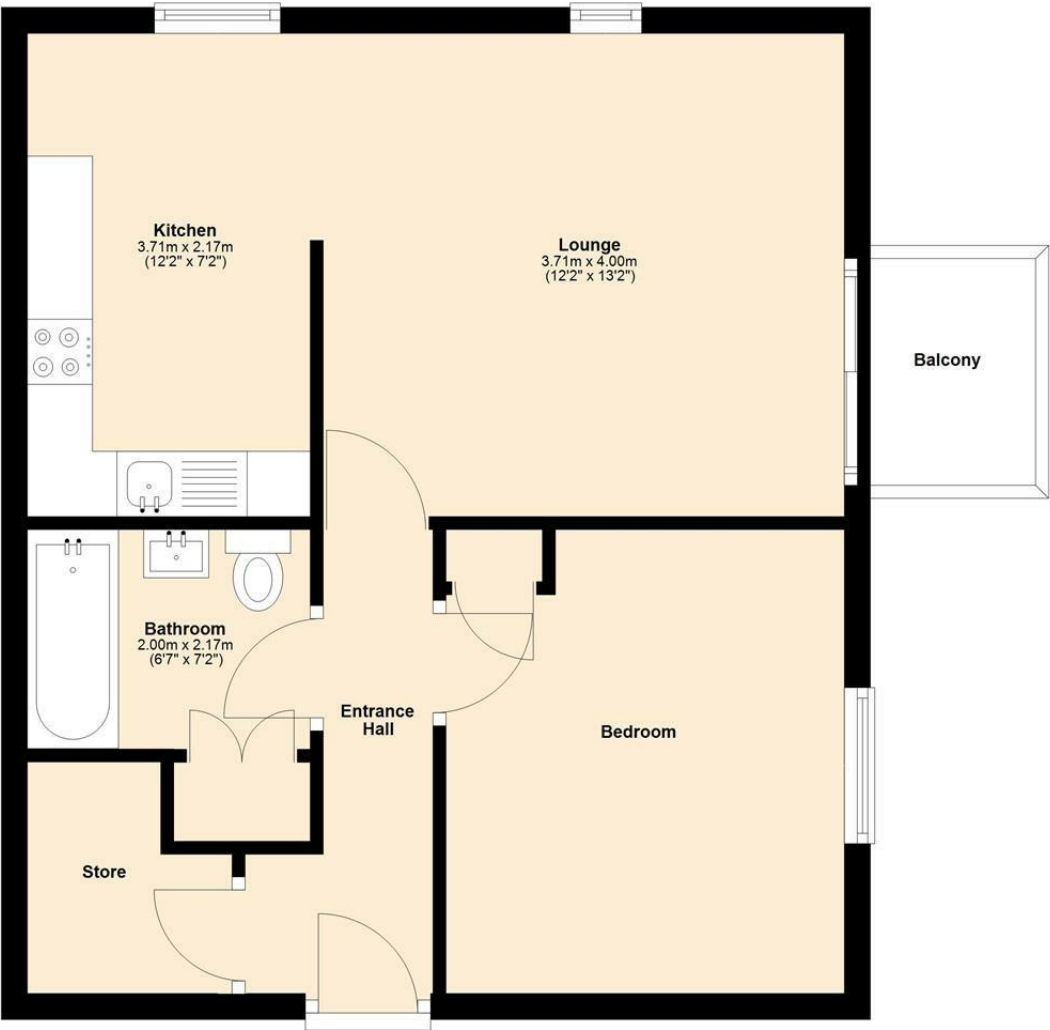
COUNCIL TAX: Band B

HOLDING RETAINER (equivalent to one weeks rental) £280

- D/GLAZED
- GCH
- FITTED KITCHEN
- LAM FLOORING
- SHOWER FACILITY
- REFURBISHED
- BUS ROUTES
- STATION



Second Floor



Whilst every attempt has been made to ensure the accuracy of the floor plan contained here, measurements of doors, windows, rooms and other areas are approximate and no responsibility taken for any error, omission or mis-statement. This plan is for illustration purposes only and should be used as such by any prospective purchaser or advisor. Tomkins Davis have not tested any apparatus, equipment, fixtures and fittings or services therefore cannot verify that they are in good working order or fit for purpose. Neither have we checked any legal documentation to verify the leasehold or freehold status of the property and advise any purchaser to obtain verification from their solicitor or surveyor.