

Est. 1947

tomkinsdavis

www.tomkinsdavis.co.uk



West End Lane, Middlesex UB3 5LY

£1,900

EPC Current Band: D

DEPOSIT ALTERNATIVE AVAILABLE

We are delighted to present this exceptionally well presented two-bedroom end-of-terrace which offers a spacious living area, modern fitted kitchen complete with appliances, two generously sized double bedrooms with built-in wardrobes and a modern three-piece bathroom suite. Additional features include gas central heating, double glazed windows and doors, a bright conservatory, well-maintained front and rear gardens, and a private garage.

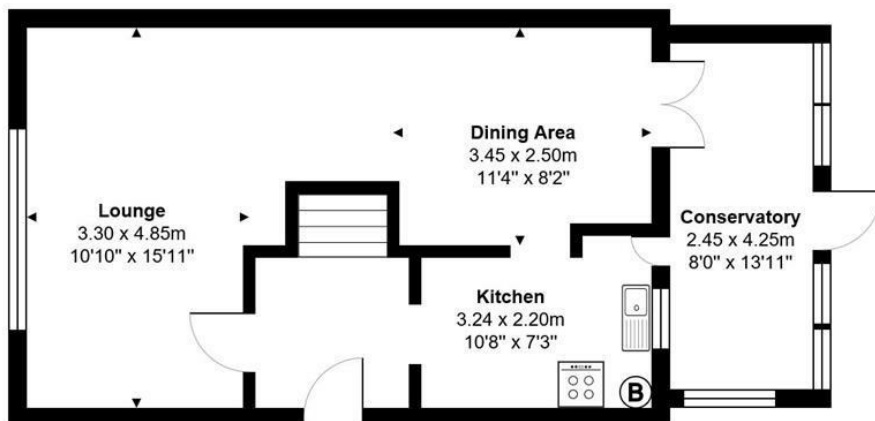
Situated within a short walk of the Bath Road, this home convenience for those commuting to Heathrow Airport or working in surrounding areas. The location provides easy access to local amenities, transport links, and green spaces, making it a desirable location for a small family.

COUNCIL TAX: Band B

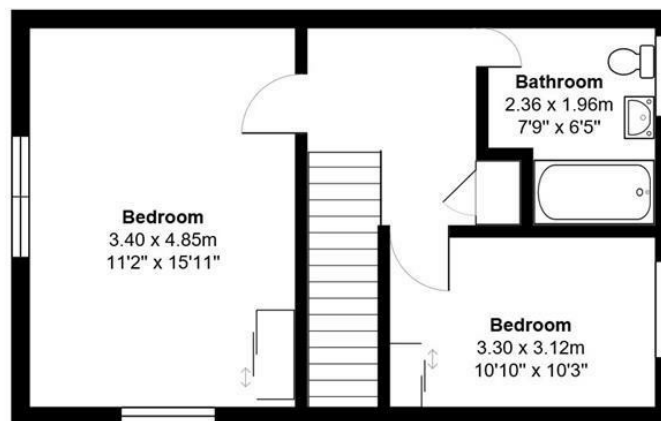
HOLDING RETAINER (equivalent to one weeks rental) £430

- D/GLAZED
- GCH
- FITTED KITCHEN

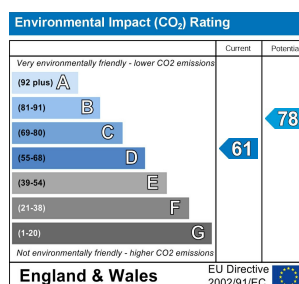
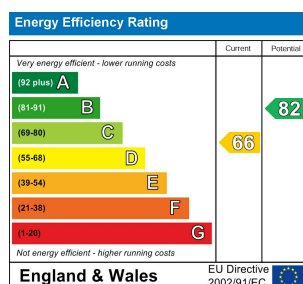




Ground Floor



1st Floor



Whilst every attempt has been made to ensure the accuracy of the floor plan contained here, measurements of doors, windows, rooms and other areas are approximate and no responsibility taken for any error, omission or mis-statement. This plan is for illustration purposes only and should be used as such by any prospective purchaser or advisor. Tomkins Davis have not tested any apparatus, equipment, fixtures and fittings or services therefore cannot verify that they are in good working order or fit for purpose. Neither have we checked any legal documentation to verify the leasehold or freehold status of the property and advise any purchaser to obtain verification from their solicitor or surveyor.