

Est. 1947

# tomkinsdavis

[www.tomkinsdavis.co.uk](http://www.tomkinsdavis.co.uk)



**Albany Park, Slough  
Berkshire SL3 0JU**

**£1,150**

**EPC Current Band: C**

**DEPOSIT ALTERNATIVE AVAILABLE**

A well-presented one bed end terrace house with triple glazing and economy seven heating. The property benefits a large double bedroom, open plan kitchen/lounge with appliances, bathroom suite with shower facility and street parking. The property is located off Bath Road, within a short drive to the M25 motorway and Heathrow Airport. Suitable for a professional single or couple.

**COUNCIL TAX: Band C**

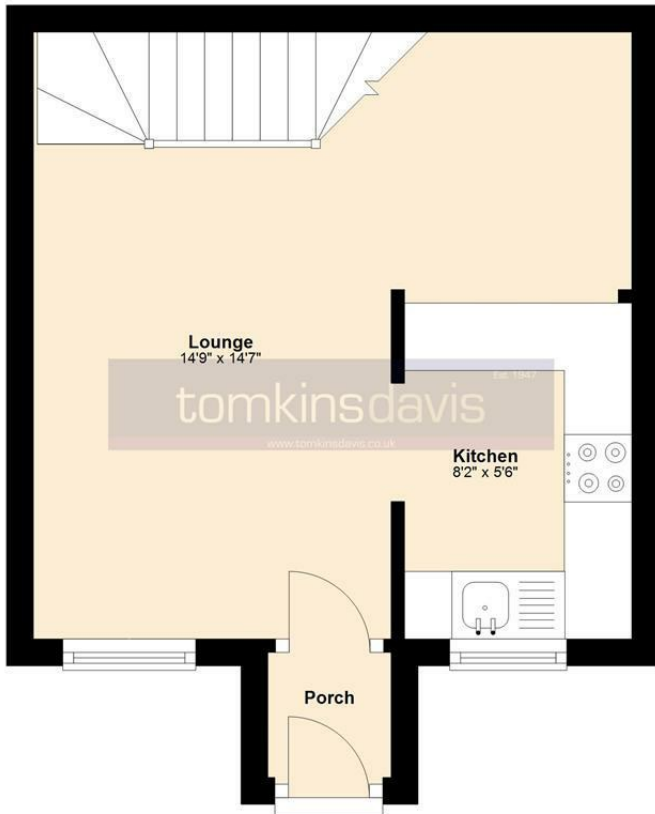
**HOLDING RETAINER (equivalent to one weeks rental) £260**





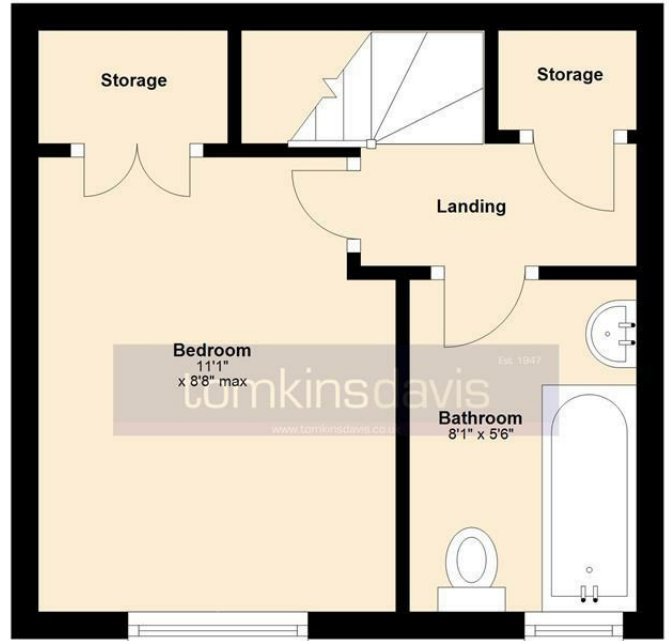
## Ground Floor

Approx. 224.7 sq. feet

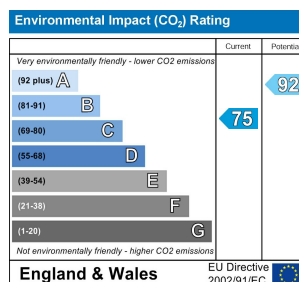
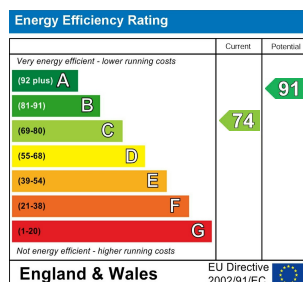


## First Floor

Approx. 205.6 sq. feet



Total area: approx. 430.3 sq. feet



Whilst every attempt has been made to ensure the accuracy of the floor plan contained here, measurements of doors, windows, rooms and other areas are approximate and no responsibility taken for any error, omission or mis-statement. This plan is for illustration purposes only and should be used as such by any prospective purchaser or advisor. Tomkins Davis have not tested any apparatus, equipment, fixtures and fittings or services therefore cannot verify that they are in good working order or fit for purpose. Neither have we checked any legal documentation to verify the leasehold or freehold status of the property and advise any purchaser to obtain verification from their solicitor or surveyor.