



Hubbards Close, Uxbridge Middlesex UB8 3HB

Asking Price £399,950

EPC Current Band: C

An attractive 1980's built mid terrace home set in a quiet residential cul-de-sac which is within easy reach of Stockley Park, Heathrow, Hillingdon Hospital as well as Uxbridge Town Centre with its excellent transport, shopping and leisure facilities.

The property offers well planned 2-bedroom accommodation which comprises a bright and airy living room with direct access to a private garden, a fitted kitchen and cloakroom/WC. To the first floor there are two sizeable bedrooms, a bathroom suite and access to loft storage.

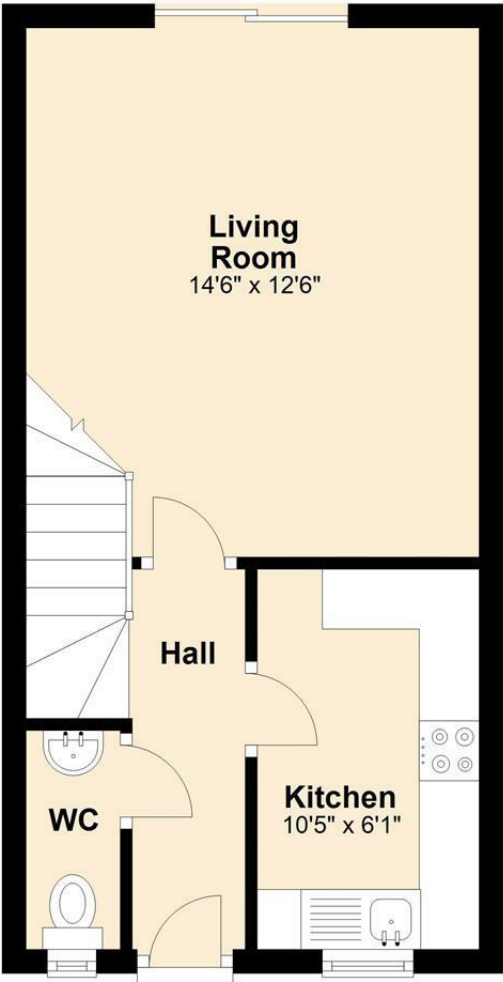
This fine home offers a young family the perfect opportunity to acquire a lovely home in a peaceful setting with amenities nearby.

Service Charge: TBC

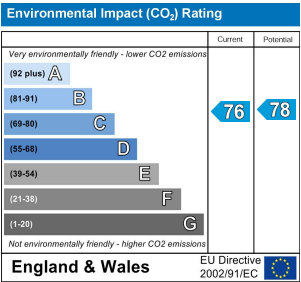
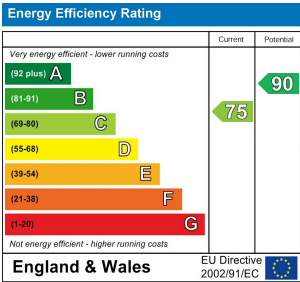
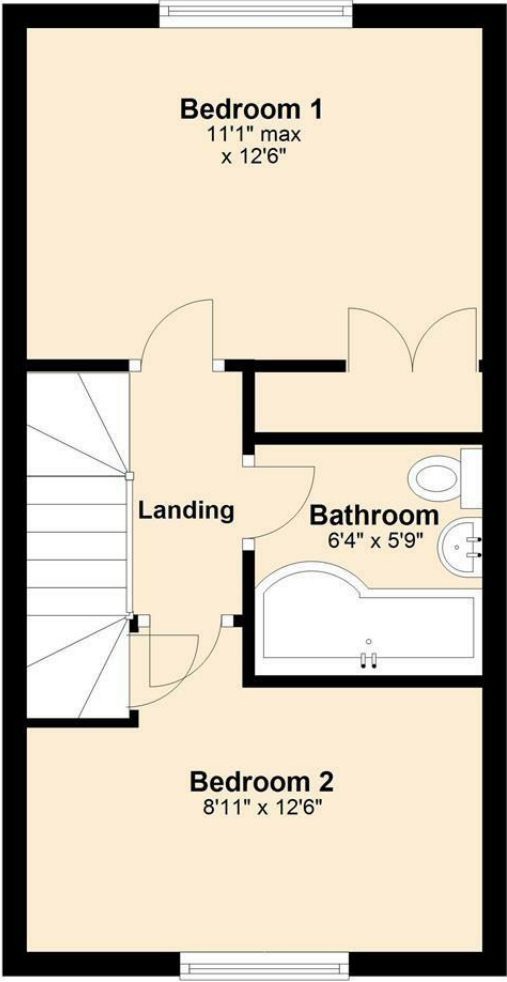
- Modern Home
- Hall with Cloakroom
- Fitted Kitchen
- Living Room
- 2 Bedrooms
- Bathroom Suite
- Gas Central Heating
- Double glazed
- Private Garden
- Allocated Parking



Ground Floor



First Floor



Whilst every attempt has been made to ensure the accuracy of the floor plan contained here, measurements of doors, windows, rooms and other areas are approximate and no responsibility taken for any error, omission or mis-statement. This plan is for illustration purposes only and should be used as such by any prospective purchaser or advisor. Tomkins Davis have not tested any apparatus, equipment, fixtures and fittings or services therefore cannot verify that they are in good working order or fit for purpose. Neither have we checked any legal documentation to verify the leasehold or freehold status of the property and advise any purchaser to obtain verification from their solicitor or surveyor.