



**Abbey Close, Middlesex
UB3 3PJ**

£1,250

EPC Current Band: C

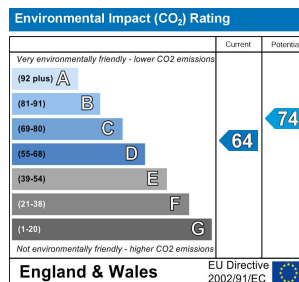
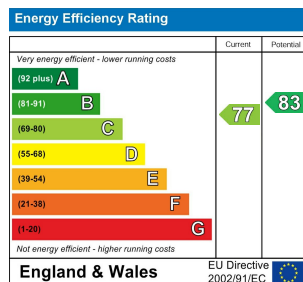
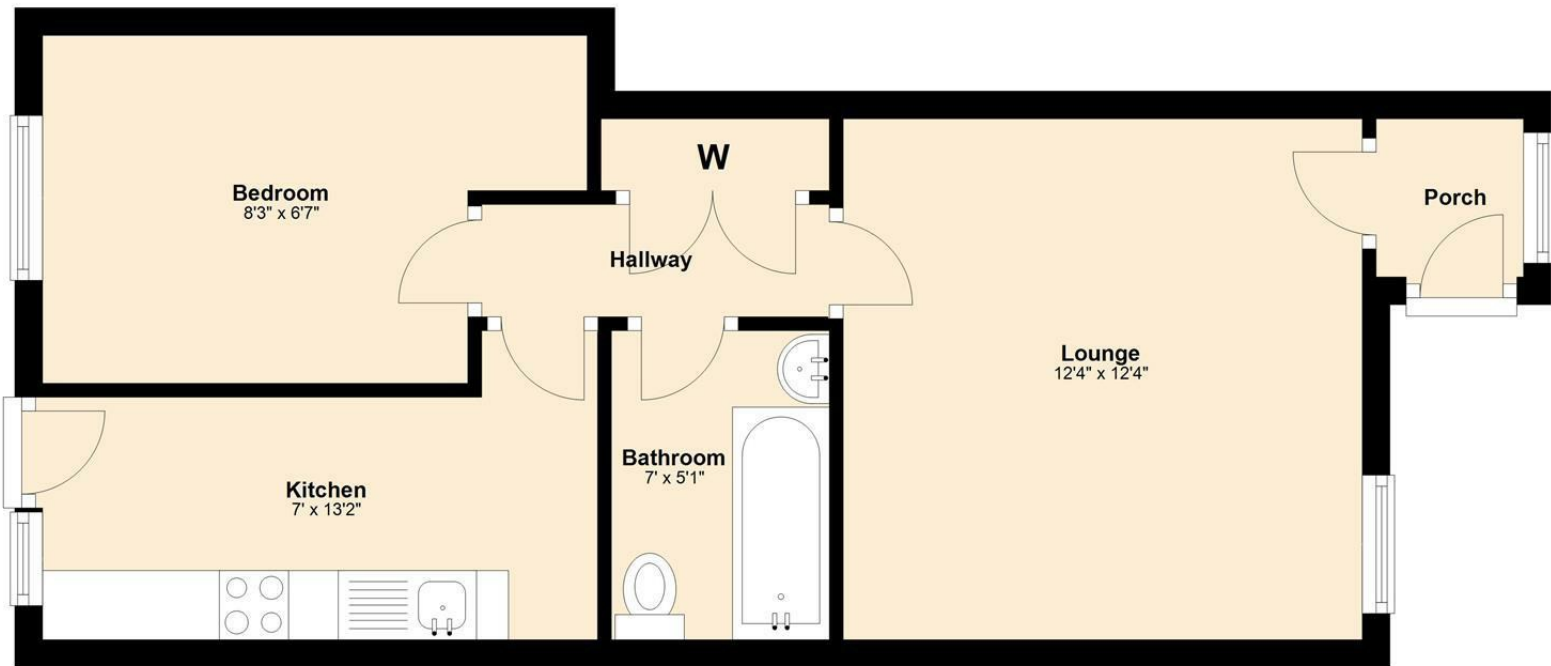
We are delighted to offer this ground floor one bed flat comprising spacious living area, modern fitted kitchen with appliances, double bedroom and modern 3-piece bath suite. Further benefits include allocated parking, electric heating and double glazed windows. Perfectly suited to a single adult or couple.

COUNCIL TAX: Band C

HOLDING RETAINER (equivalent to one weeks rental) £280



Ground Floor



Whilst every attempt has been made to ensure the accuracy of the floor plan contained here, measurements of doors, windows, rooms and other areas are approximate and no responsibility taken for any error, omission or mis-statement. This plan is for illustration purposes only and should be used as such by any prospective purchaser or advisor. Tomkins Davis have not tested any apparatus, equipment, fixtures and fittings or services therefore cannot verify that they are in good working order or fit for purpose. Neither have we checked any legal documentation to verify the leasehold or freehold status of the property and advise any purchaser to obtain verification from their solicitor or surveyor.