



Chantry Close, Sunbury Middlesex TW16 7TH

£1,700

EPC Current Band: B

A well-presented three-bedroom first-floor flat, excellently located less than half a mile from Sudbury Railway Station and conveniently situated next to the main road bus stop, offering routes to Hounslow, Isleworth, Brentford, and Sudbury Village itself.

The property features a spacious lounge, a fully fitted kitchen with appliances, two generously sized double bedrooms (one with an en-suite shower room), an additional single bedroom, and a family bathroom suite with both a bath and a walk-in shower.

Additional benefits include gas central heating, double-glazed windows, and allocated parking.

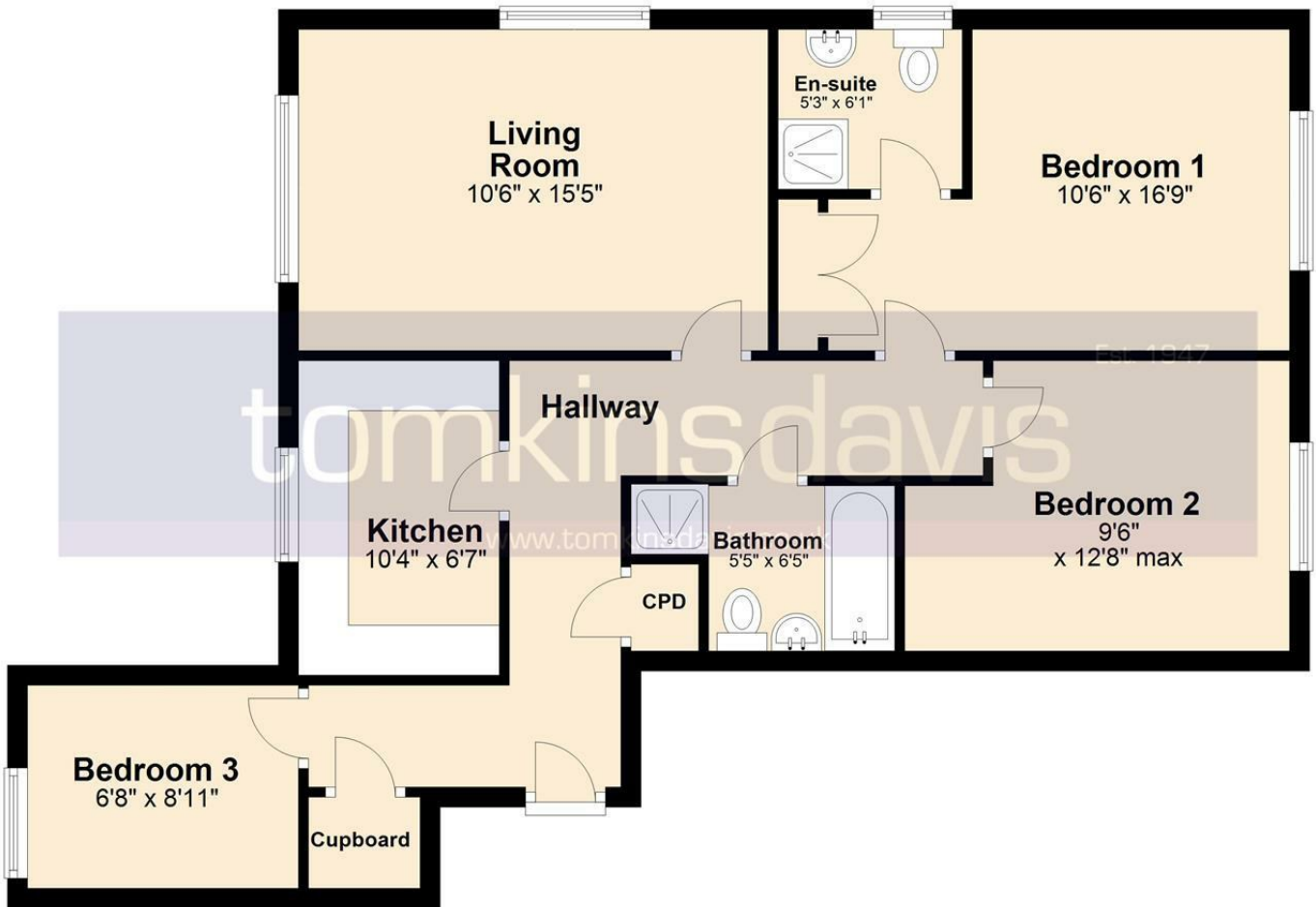
COUNCIL TAX: Band D

HOLDING RETAINER (equivalent to one weeks rental) £390



Ground Floor

Approx. 784.0 sq. feet



Total area: approx. 784.0 sq. feet

Energy Efficiency Rating		Current	Potential
Very energy efficient - lower running costs			
(92 plus) A			
(81-91) B			
(69-80) C			
(55-68) D			
(39-54) E			
(21-38) F			
(1-20) G			
Not energy efficient - higher running costs			
England & Wales	EU Directive 2002/91/EC	82	82

Environmental Impact (CO ₂) Rating		Current	Potential
Very environmentally friendly - lower CO ₂ emissions			
(92 plus) A			
(81-91) B			
(69-80) C			
(55-68) D			
(39-54) E			
(21-38) F			
(1-20) G			
Not environmentally friendly - higher CO ₂ emissions			
England & Wales	EU Directive 2002/91/EC		

Whilst every attempt has been made to ensure the accuracy of the floor plan contained here, measurements of doors, windows, rooms and other areas are approximate and no responsibility taken for any error, omission or mis-statement. This plan is for illustration purposes only and should be used as such by any prospective purchaser or advisor. Tomkins Davis have not tested any apparatus, equipment, fixtures and fittings or services therefore cannot verify that they are in good working order or fit for purpose. Neither have we checked any legal documentation to verify the leasehold or freehold status of the property and advise any purchaser to obtain verification from their solicitor or surveyor.