



**Stirling Road, Hayes
Middlesex UB3 3AQ**

Asking Price £725,000

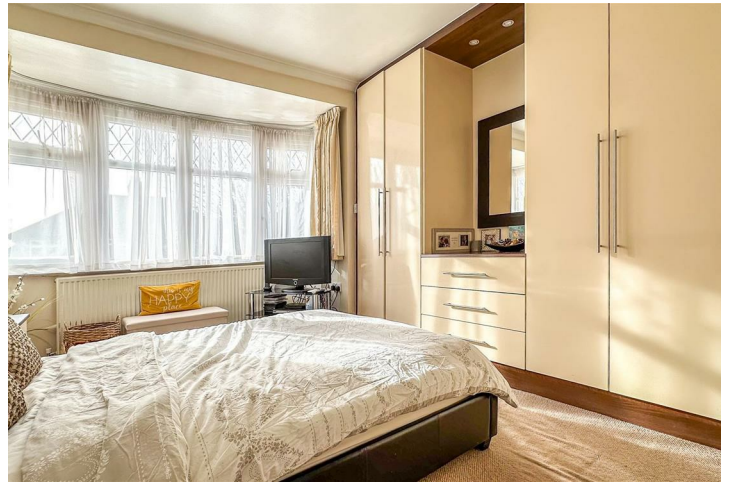
EPC Current Band: C

We are delighted to offer for sale this superior Scott & Speedie semi-detached which is much improved with the addition of an enlarged ground floor and a loft conversion. This impressive home now offers family accommodation over 3 floors with excellent living space and 5 bedrooms.

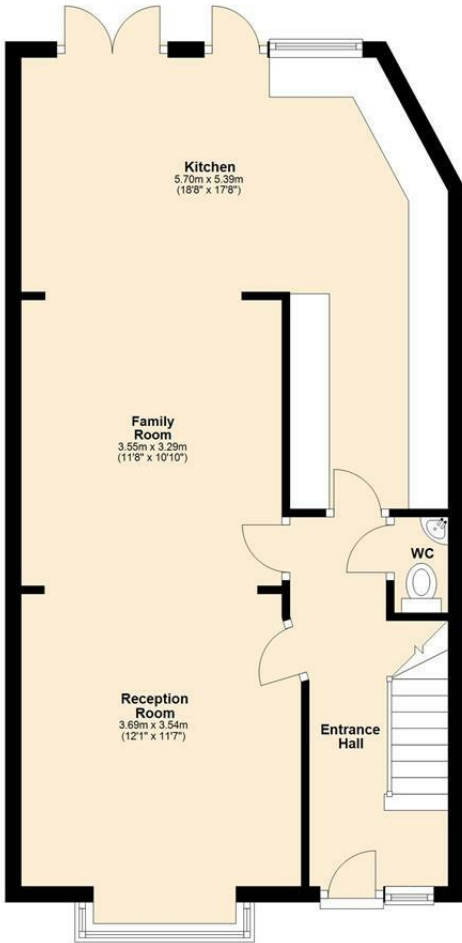
This fine home is located on what is considered the finest residential road in Hayes Town with access for shopping and general amenities within walking distance. Road and public transport links are excellent with access to the M25 and M4 close by, good bus links and the recently operational Elizabeth Line providing fast access into Central London.

For buyers searching for a spacious and conveniently located home we recommend an early viewing.

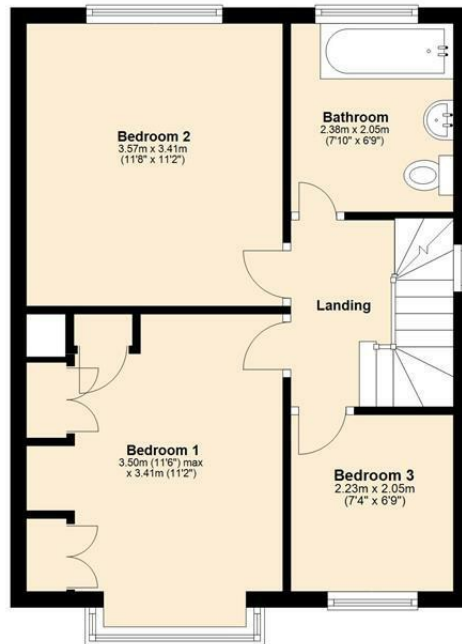
- Scott & Speedie Semi-Detached
- Entrance Porch
- Hall with Cloakroom/WC
- Large Through Lounge
- Fitted Kitchen/Dining Room
- 4 Spacious Bedrooms
- 2 Bath/Shower Suites
- Brick Built Garage
- Attractive Gardens
- Off Street Parking



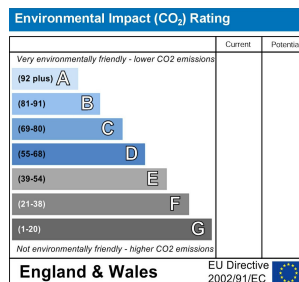
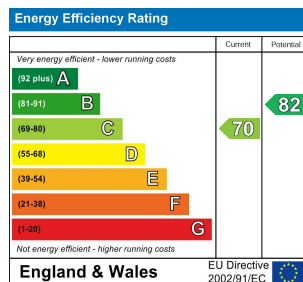
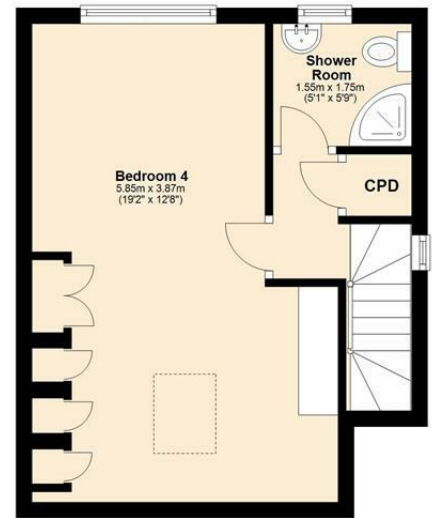
Ground Floor



First Floor



Second Floor



Whilst every attempt has been made to ensure the accuracy of the floor plan contained here, measurements of doors, windows, rooms and other areas are approximate and no responsibility taken for any error, omission or mis-statement. This plan is for illustration purposes only and should be used as such by any prospective purchaser or advisor. Tomkins Davis have not tested any apparatus, equipment, fixtures and fittings or services therefore cannot verify that they are in good working order or fit for purpose. Neither have we checked any legal documentation to verify the leasehold or freehold status of the property and advise any purchaser to obtain verification from their solicitor or surveyor.