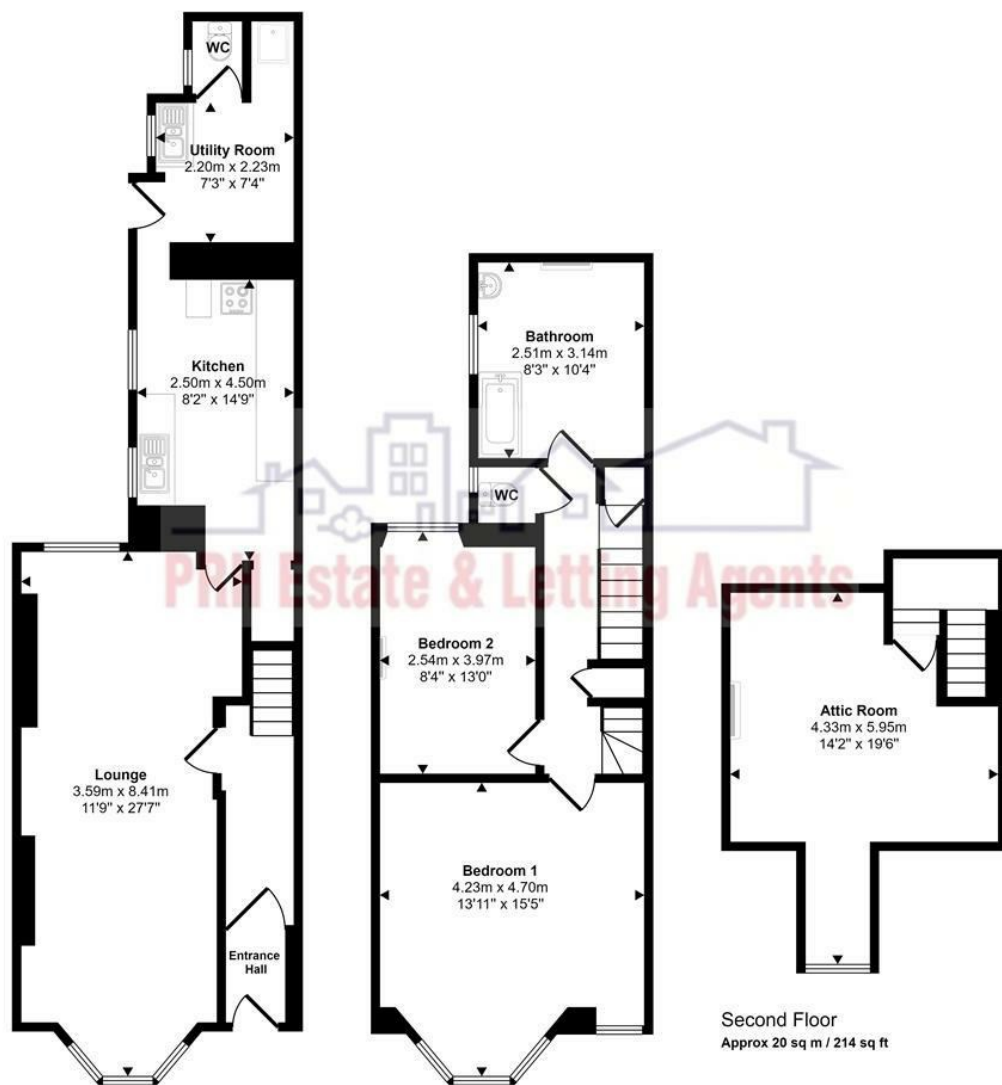


Approx Gross Internal Area  
120 sq m / 1295 sq ft



Penzance

£295,000





4 St. Johns Terrace  
Penzance  
TR18 2HD

£295,000

## KEY FEATURES

- Victorian character property
- Sea and harbour views
- South facing
- 3 double bedrooms
- Gas Central heating
- EPC - E
- Quiet, tree lined location
- Close to town

## DIRECTIONS

As you enter Penzance and before the railway station which you will see on the left, turn right heading up Brittons Hill then on to Penare Road. Continue for a short distance and at the crossroads turn left onto Penare Terrace, St John's Terrace is on the left downhill with the row of eight Victorian terraced houses on the right.



*St. John's Terrace, Penzance is a row of eight Victorian, character properties set in a unique location with views across the harbour and out into Mounts Bay. With its pre-1914 heritage, the property boasts a number of period features that reflect its historical charm.*

*The house comprises one open-plan reception room facing South and overlooking an extensive tree-lined area, allotments, and St John's Church. The three spacious double bedrooms provide ample accommodation, with the main bedroom looking down towards the harbour and quayside from where the Scillonian sails throughout the season to the Isles of Scilly.*

*While the property requires some updating, it presents a fantastic opportunity for buyers to put their own character on this home. The quiet location further enhances its appeal, providing a peaceful environment while still being within reach of local amenities and the vibrant community of Penzance.*

*In summary, this Victorian character property is a rare find as these properties do not come up for sale very often. With its enviable views and spacious layout, it is sure to attract those looking for a home that offers both comfort and character.*

*Offcom suggest that Ultrafast broadband is available in this location and mobile coverage is likely at this property.*

