



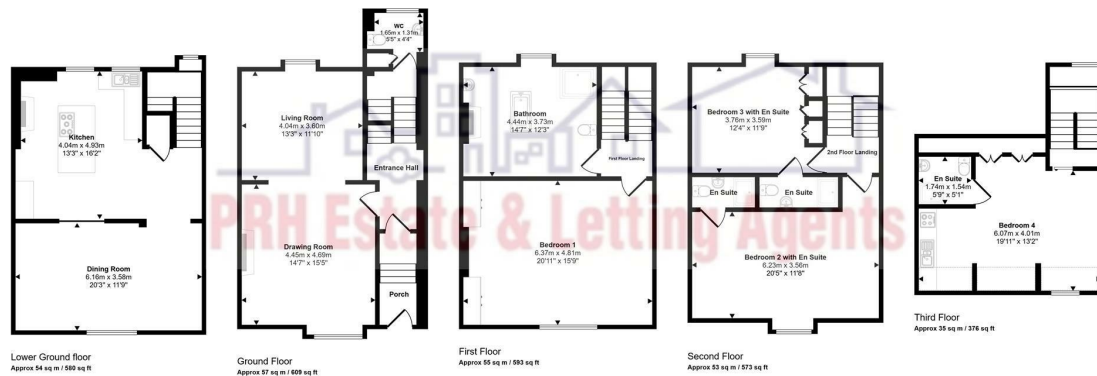
Penzance

£790,000



4 The Green Market, Penzance, Cornwall, TR18 2SH T: 01736 363816 E:mail@prhpenzance.co.uk

Approx Gross Internal Area
254 sq m / 2731 sq ft



This floorplan is only for illustrative purposes and is not to scale. Measurements of rooms, doors, windows, and any items are approximate and no responsibility is taken for any error, omission or mis-statement. Items of furniture such as bedrooms suites are representations only and may not look like the real items. Made with Magic Drawings 360.

The accuracy of these particulars is not guaranteed nor do they form part of any contract. Applicants should verify details by personal examination and enquiry.

PRH is a trading name of PRH Lettings Limited. Registered office: 15 Alverton Street, Penzance, Cornwall, TR18 2QP. Registered in England No. 6667569



2 South Parade
Penzance
TR18 4DJ

£790,000

KEY FEATURES

- Grade II Listed Georgian Town House
- Gardens & Parking
- Sea Views
- 4 Bedrooms (3 with En Suite shower rooms)
- Drawing Room, Living Room & Dining Room
- EPC D (59 78)
- Gas Central Heating

DIRECTIONS

From our office pass the Lloyds Bank building on the left hand side and proceed down Chapel Street. Take the first turn on the left in Queens Square into Parade Passage. Follow the road around to the left and South Parade is on the right.



South Parade presents an exquisite Grade II listed Georgian townhouse, a true gem in one of the most privileged terraces overlooking Morrab Gardens. This remarkable property is arranged over five spacious floors, offering a generous layout that is perfect for family living.

On the ground floor you are greeted by a large open-plan living room which exudes elegance and warmth. The townhouse boasts four well-appointed bedrooms, including three en suite, ensuring comfort and privacy for all residents. An additional elegant bathroom complements the living spaces, providing convenience for family and visitors alike.

The lower ground floor features a delightful dining room and a well-equipped kitchen, perfect for culinary enthusiasts and family gatherings. The charm of this property extends outdoors, with a pretty, enclosed courtyard garden at the rear, offering a tranquil retreat for outdoor enjoyment. Additionally, the front of the house features a shared lawned garden, enhancing the appeal of this lovely home.

Parking is a breeze with space for two cars, a rare find in such a central location. The property is set behind an ornate gated drive, providing both security and a sense of exclusivity. This Georgian townhouse is not just a home; it is a lifestyle choice, combining historical charm with modern convenience in one of Cornwall's most sought-after locations. Whether you are looking for a family residence or a holiday retreat, this property is sure to impress.

