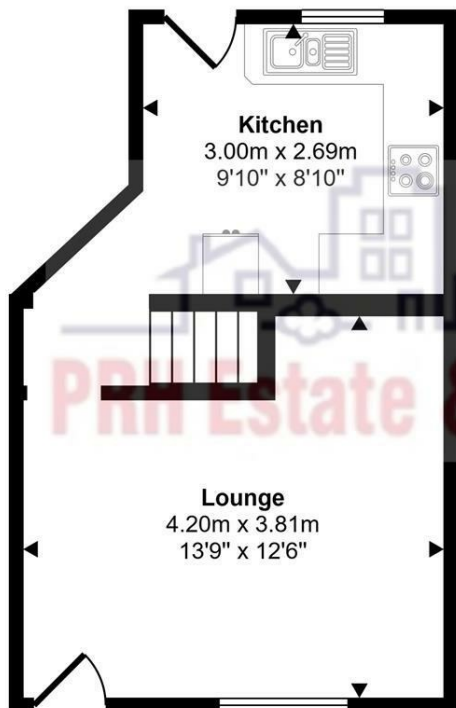
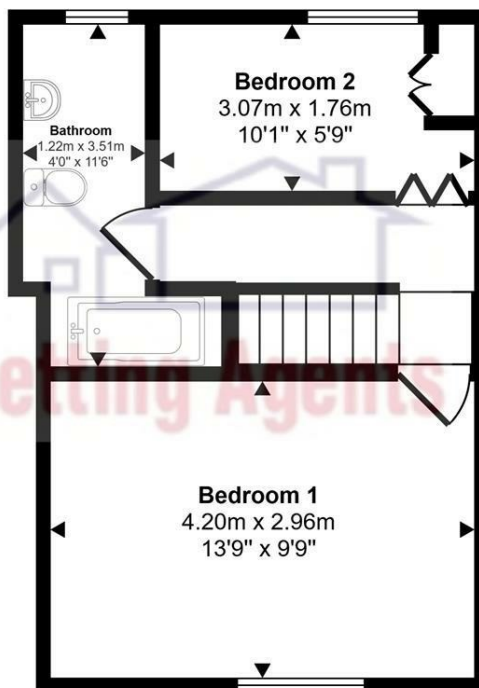


Approx Gross Internal Area
54 sq m / 581 sq ft



Ground Floor
Approx 26 sq m / 275 sq ft

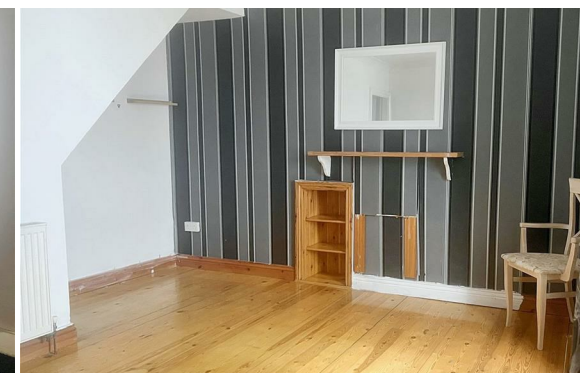


First Floor
Approx 28 sq m / 306 sq ft



Penzance

£225,000



4 Regent Buildings, Chapel Street,
Penzance
TR18 4BS

£225,000

KEY FEATURES

- Period Property
- Central and historic location
- Close to Penzance Seafront
- 2 bedrooms
- Shared Garden
- EPC - D

DIRECTIONS

From our office turn right onto The Greenmarket, then right into Market Square which leads onto Chapel Street. Continue towards the bottom of Chapel Street and turn right after The Cornish Barn. Regent Buildings is on the left.



Nestled in the charming Regent Buildings in the heart of Chapel Street area of Penzance, this delightful terraced cottage offers a perfect blend of period character and modern living. With two bedrooms, this cottage is full of character with some refurbishment to put your own stamp on the property.

The cottage is situated in a sought-after location, known for its picturesque surroundings and vibrant community. Situated in the heart of Penzance, close to the seafront and Jubilee Pool, local shops, and with delightful eateries just a stone's throw away. The area is rich in history and culture and properties in this area rarely come up for sale.

As a period property, this cottage boasts original features that add to its charm and character. The shared garden provides a lovely outdoor space for relaxation and socialising, perfect for enjoying the fresh air and sunshine in the centre of the town.

This property presents an excellent opportunity for those looking for the coastal lifestyle in a beautiful and historic setting. Whether you are a first-time buyer or seeking a new rental, this cottage is sure to impress with its inviting atmosphere and prime location.

