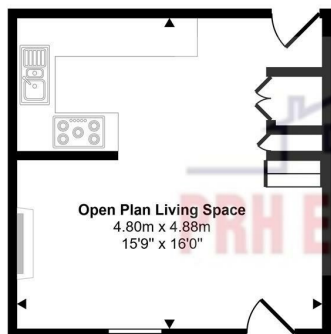
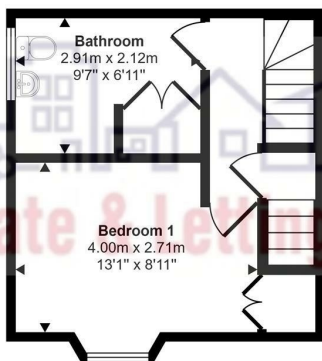


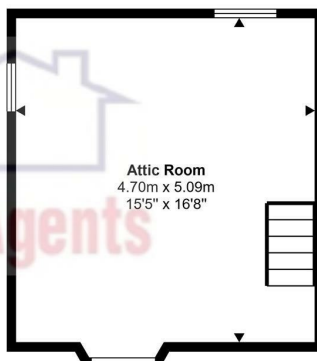
Approx Gross Internal Area
72 sq m / 775 sq ft



Ground Floor
Approx 23 sq m / 252 sq ft



First Floor
Approx 24 sq m / 261 sq ft

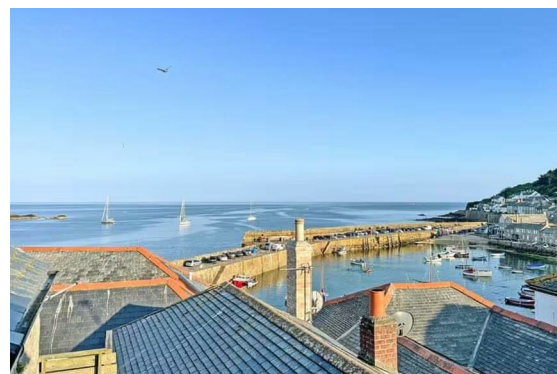


Second Floor
Approx 24 sq m / 261 sq ft



Mousehole

£375,000



The accuracy of these particulars is not guaranteed nor do they form part of any contract. Applicants should verify details by personal examination and enquiry.

PRH is a trading name of PRH Lettings Limited. Registered office: 15 Alverton Street, Penzance, Cornwall, TR18 2QP. Registered in England No. 6667569



4 The Green Market, Penzance, Cornwall, TR18 2SH T: 01736 363816 E:mail@prhpenzance.co.uk

The Haven Commercial Road
Mousehole
TR19 6QG

£375,000

KEY FEATURES

- Freehold Cottage
- Close to Mousehole Harbour
- Fully renovated
- Under Floor Heating & Electric Heaters
- Sea and harbour views
- EPC - F (30 - 84)
- Pretty Village Location
- Shared Outside Space
- 2 Small Out Buildings

DIRECTIONS

From Penzance proceed along the seafront to Newlyn, go over the bridge, follow the road around to the left past the harbour and port and continue along the seafront to the village of Mousehole. As you enter the village, with the car park on the left-hand side, continue down Parade Hill on foot and you will find "The Haven" in the corner, at the junction of Parade Hill, Commercial Road and Quay Street.



Situated in the heart of the picturesque village of Mousehole, this quintessential terraced house on Commercial Road is a delightful and charming home. As you step inside, you are greeted by an open plan living room. With a lounge area with a log burner (in addition to the underfloor heating), and a well equipped kitchen areawith granite work surfaces.

This Haven has two bedrooms, the main bedroom being the attic room which boasts enviable sea and harbour views.

Just a short stroll from the harbourside, this house provides the ideal opportunity to immerse yourself in the unique atmosphere of Mousehole. Whether you're looking for a peaceful retreat or a holiday home, this cottage is sure to capture your heart with its character and warmth.

*Services: Mains Electric, Water & Drainage *** Heating: Under floor heating, Log Burner & Electric Heaters
*** Double Glazed Windows and Doors
*** Council Tax: Band B*

The Haven has been used as a holiday home and therefore complies with holiday rental regulations. With this in mind, the furniture may be available by negotiation separately.

