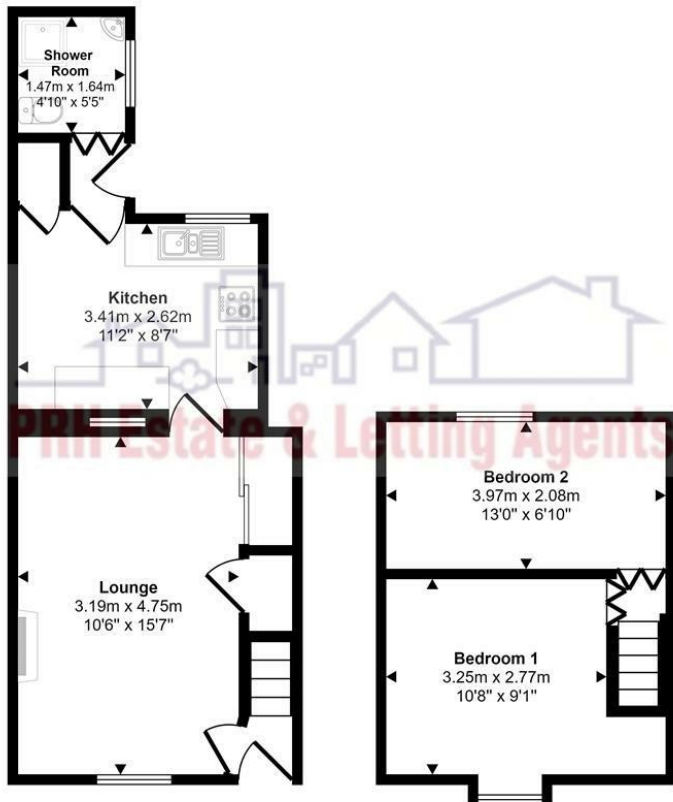


Approx Gross Internal Area
54 sq m / 576 sq ft



Ground Floor
Approx 33 sq m / 356 sq ft

First Floor
Approx 20 sq m / 220 sq ft

This floorplan is only for illustrative purposes and is not to scale. Measurements of rooms, doors, windows, and any items are approximate and no responsibility is taken for any error, omission or mis-statement. Icons of items such as bathroom suites are representations only and may not look like the real items. Made with Made Snappy 360.



Heamoor

£185,000



13 Jamaica Place
Heamoor
TR18 3HG

£185,000

KEY FEATURES

- Freehold Terraced Cottage
- Traffic Free Location
- Mains Gas, Electric, Water & Drainage
- Gas Central Heating
- Lovely Front Garden
- EPC C (69 90)
- Popular Village

DIRECTIONS

Proceed into Heamoor on Madron Road where Jamaica Place is located half way along Rosparvah Gardens and has pedestrian access only.



Welcome to Jamaica Place, Heamoor - a charming location for an equally charming property. This granite cottage is perfect for those seeking a peaceful home in a traffic free location.

As you step inside, the living room has a homely feel and overlooks the front garden and the path to this historical row of cottages. There is a good sized kitchen with a downstairs shower room . There are two double bedrooms on the first floor with a views over the front garden and rear courtyard.

One of the highlights of this property is the sunny front garden, a perfect spot for enjoying a morning cup of tea. Additionally, the rear courtyard with a shed provides extra storage space. This home is ready for the next owner to add their own stamp and is offered as a blank canvas.

Situated in a row of cottages, this home offers a tranquil environment yet is only a short distance away from the village shops. There is a bus stop at the end of the terrace. The neighbouring market town of Penzance is a short distance away.

SERVICES: Mains electric, water and drainage, gas central heating.

