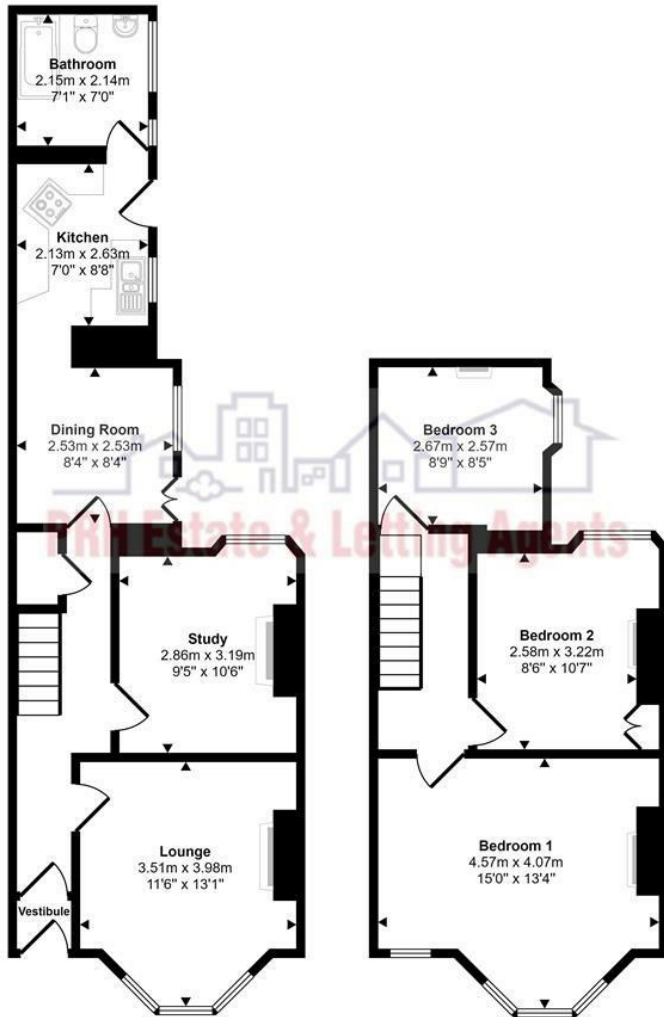


Approx Gross Internal Area  
91 sq m / 980 sq ft



Ground Floor  
Approx 51 sq m / 551 sq ft

First Floor  
Approx 40 sq m / 429 sq ft

This floorplan is only for illustrative purposes and is not to scale. Measurements of rooms, doors, windows, and any items are approximate and no responsibility is taken for any error, omission or mis-statement. Icons of items such as bathroom suites are representations only and may not look like the real items. Made with Made Snappy 360.



Heamoor

£275,000



The accuracy of these particulars is not guaranteed nor do they form part of any contract. Applicants should verify details by personal examination and enquiry.

PRH is a trading name of PRH Lettings Limited. Registered office: 15 Alverton Street, Penzance, Cornwall, TR18 2QP. Registered in England No. 6667569



4 The Green Market, Penzance, Cornwall, TR18 2SH T: 01736 363816 E:mail@prhpenzance.co.uk



5 Tretorvic  
Heamoor  
TR18 3EQ

£275,000

## KEY FEATURES

- Terraced Victorian House
- Spacious and Versatile Living Accommodation
- Wooden Sash Windows
- Many Charming Features
- Gas Central Heating
- EPC D (60 86)
- Log Burner & Open Fire
- All Mains Services Connected

## DIRECTIONS

From Penzance proceed into Heamoor onto Madron Road. Tretorvic is situated at the far end of the village prior to the turning onto Josephs Lane

*A perfect example of a Victorian home. We have been informed that the terrace itself was in fact originally named Victoria Terrace until the sign was knocked off and broke into pieces, the letters that could be saved were reused to form the now-known street name of Tretorvic.*

*Thyme Lea is a delightful home with 3 reception rooms, kitchen and bathroom on the ground floor. On the first floor are 3 bedrooms. Many charming features include ornate fireplaces, picture rails, corniced ceilings and reclaimed doors from the former manor house. This home is a true gem. The terrace is pedestrian only which adds to its charm. As does the courtyard at the rear and the rural views. The owners of Thyme Lea have maintained the property throughout their ownership including works such as a new gas boiler, the windows have been serviced and painted, and a multi-fuel stove installed.*

*Heamoor is a popular village with a general store, a bakery, a fish-and-chip shop, pub, community halls and schools. The neighbouring town of Penzance is a short distance away and offers a more comprehensive range of amenities.*

