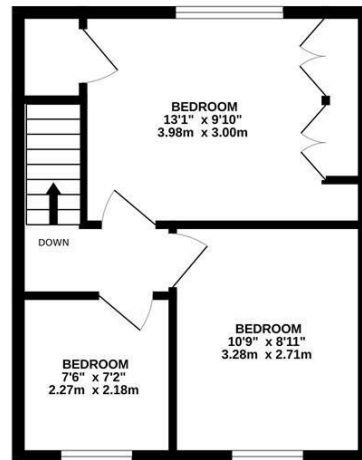
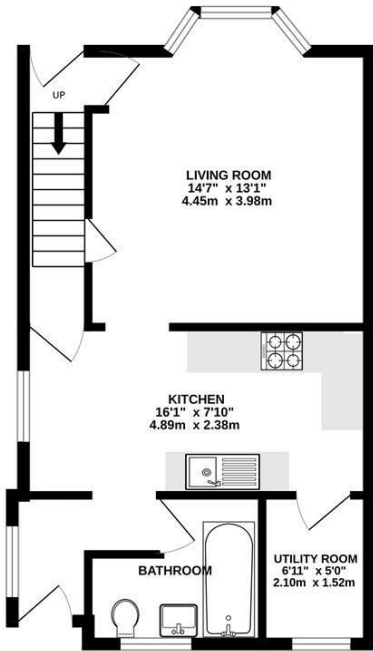


GROUND FLOOR
450 sq.ft. (41.8 sq.m.) approx.

1ST FLOOR
331 sq.ft. (30.7 sq.m.) approx.



TOTAL FLOOR AREA: 781 sq.ft. (72.6 sq.m.) approx.
Whilst every attempt has been made to ensure the accuracy of the floorplan contained here, measurements of doors, windows, rooms and any other items are approximate and no responsibility is taken for any error, omission or mis-statement. This plan is for illustrative purposes only and should be used as such by any prospective purchaser. The services, systems and appliances shown have not been tested and no guarantee as to their operability or efficiency can be given.
Made with Metropix ©2024



Newlyn

£300,000



5 Gwavas Road
Newlyn
TR18 5LZ

£300,000

KEY FEATURES

- FREEHOLD SEMI DETACHED HOUSE
- SPACIOUS 4 BEDROOM HOUSE
- OUT HOUSE (IDEAL IF WORKING FROM HOME)
- SEA VIEWS
- GARDENS
- EPC - D (62 82)
- COUNCIL TAX BAND: B
- 4 BEDROOMS (1 ON THE GROUND FLOOR)

DIRECTIONS

As you enter Newlyn continue as if you were heading to Mousehole. After the one way system of Lower Green Street, turn sharp right onto Higher Green Street. Then turn right onto Bowgey Hill. Continue until the top of the hill and turn right where you will see the property on the left as identified by our 'For Sale' board.



Welcome to Gwavas Road, Newlyn, a charming location for this end terrace house. This well-proportioned property boasts one reception room, a kitchen, bathroom and a fourth bedroom/office on the ground floor. On the first floor are 3 further bedrooms, making it an ideal spacious family home.

Situated in a great location, this house offers stunning sea views. Imagine sitting on the patio enjoying a cup of tea while overlooking the beautiful sea.

This property is ready for you to move in and make it your own. The layout of the house is well thought out, providing ample space for your family to relax and unwind.

In addition to the above, there is an outbuilding that the current owners have used as an overflow to the house (to the delight of their teenage daughter). It could be used in various ways and is a great addition to the already spacious property.

*SERVICES: All Mains Services are connected *** HEATING: Electric*

