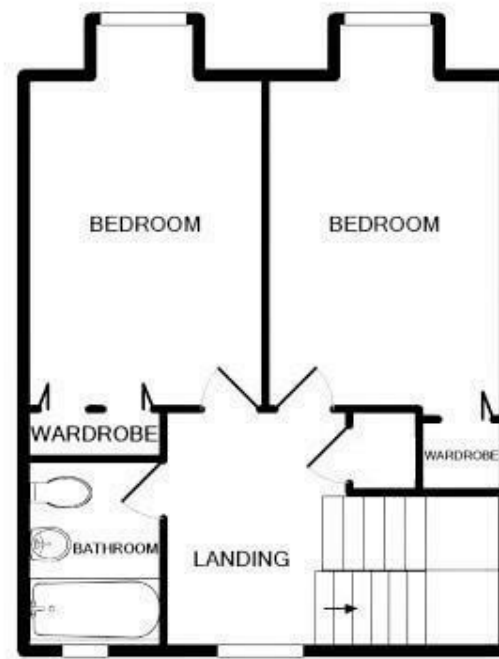


GROUND FLOOR



1ST FLOOR



Penzance

£245,000



The accuracy of these particulars is not guaranteed nor do they form part of any contract. Applicants should verify details by personal examination and enquiry.

PRH is a trading name of PRH Lettings Limited. Registered office: 15 Alverton Street, Penzance, Cornwall, TR18 2QP. Registered in England No. 6667569



4 The Green Market, Penzance, Cornwall, TR18 2SH T: 01736 363816 E:mail@prhpenzance.co.uk

Overstrand 19 Wharfside Village
Penzance
TR18 2GA

£245,000

KEY FEATURES

- Leasehold property with the remainder of 189 year lease commenced 2016
- Mains gas, electric, water & drainage
- Gas central heating and double glazed throughout
- Private Balcony & Mediterranean paved garden
- Well proportioned accommodation
- EPC - C 64 66
- Parking By Separate Negotiations
- Some sea views from the property and views across the harbour from the communal areas

DIRECTIONS

From our office turn right onto Market Jew Street. Continue for approximately 400 yards where Wharfside Shopping Centre is located on the right. At the far end of the complex, either steps or an elevator take you to the second floor where there are electric security gates providing access to the residential area.



Nestled in the charming Wharfside Village which overlooks the picturesque harbour, St. Michael's Mount, and across to the Lizard, is this delightful end terrace house. Conveniently located in the heart of town, this property is just a stone's throw away from shops, the seafront, and both the train and bus stations, making it a dream for those seeking easy access to amenities and transportation.

Step inside to discover a well-designed layout, with an open plan lounge and dining room flowing seamlessly into the kitchen. The ground floor also houses a convenient WC, while upstairs you'll find two double bedrooms and a bathroom. Boasting 947 sq ft of living space, this property offers a perfect blend of comfort and convenience.

Overstrand features a delightful balcony where you can enjoy the views, as well as a Mediterranean-style patio, ideal for enjoying al fresco dining or simply unwinding after a long day. For those with vehicles, parking is available via separate negotiation.

